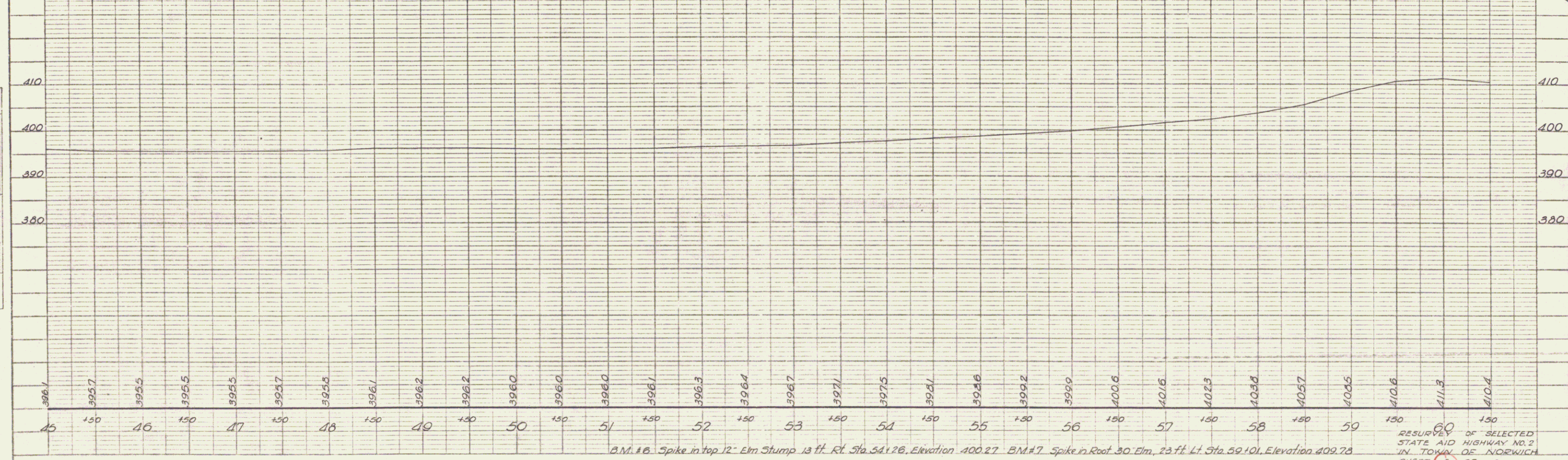
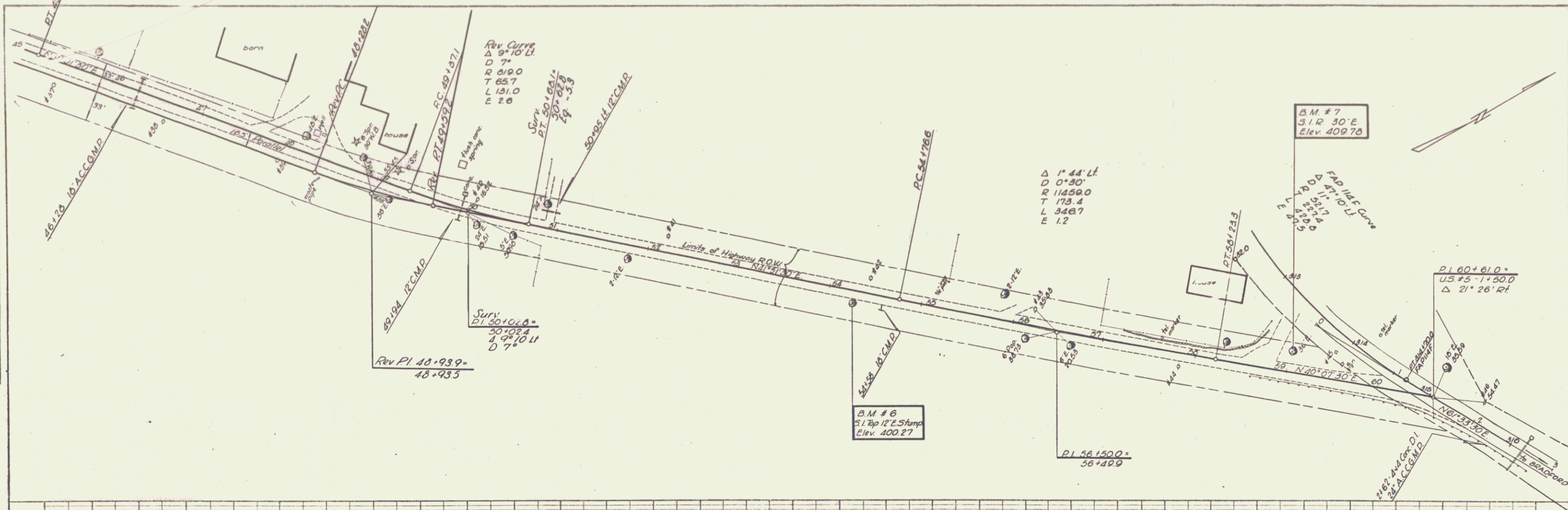


PLAN  
 DATE: 5-30  
 DRAWN BY: [Signature]  
 CHECKED BY: [Signature]

PROFILE  
 DATE: [Blank]  
 DRAWN BY: [Blank]  
 CHECKED BY: [Blank]



B.M. #6 Spike in top 12" Elm Stump 13 ft. Rt. Sta. 54+26, Elevation 400.27. B.M. #7 Spike in Root 30' Elm, 23 ft. Lt. Sta. 59+10, Elevation 409.78

RESURVEY OF SELECTED STATE AID HIGHWAY NO. 2 IN TOWN OF NORWICH SHEET 5 OF 3

PLATE 1-PLAN-PROFILE OF P.R.A.R.E. STATION  
 AS PER A. ELLER ED. NEW YORK  
 S.E. EN. NO. 348-0

6