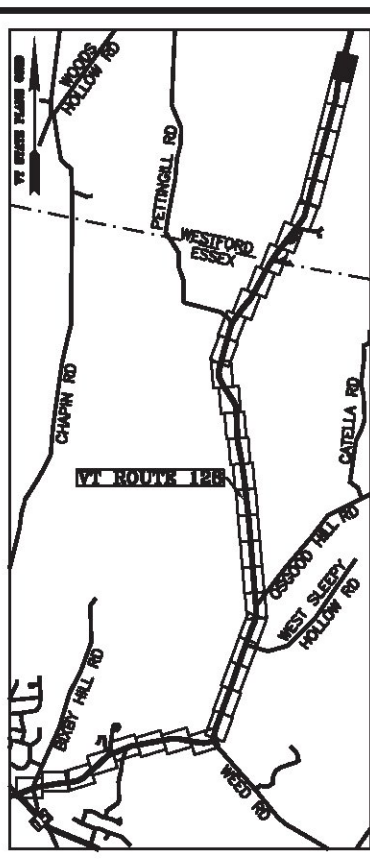


BASIS OF BEARINGS & COORDINATES  
Datum: Horizontal - NAD 83(2007) SPC (4400 VT) sFT



LINE	BEARING	DISTANCE
90-91	SEE CURVE TABLE	
91-92	N 07° 54' 37" E	282.87'
92-93	N 07° 54' 37" E	116.52'
94-95	S 07° 54' 37" W	116.03'
95-96	S 07° 54' 37" W	282.87'
96-97	SEE CURVE TABLE	

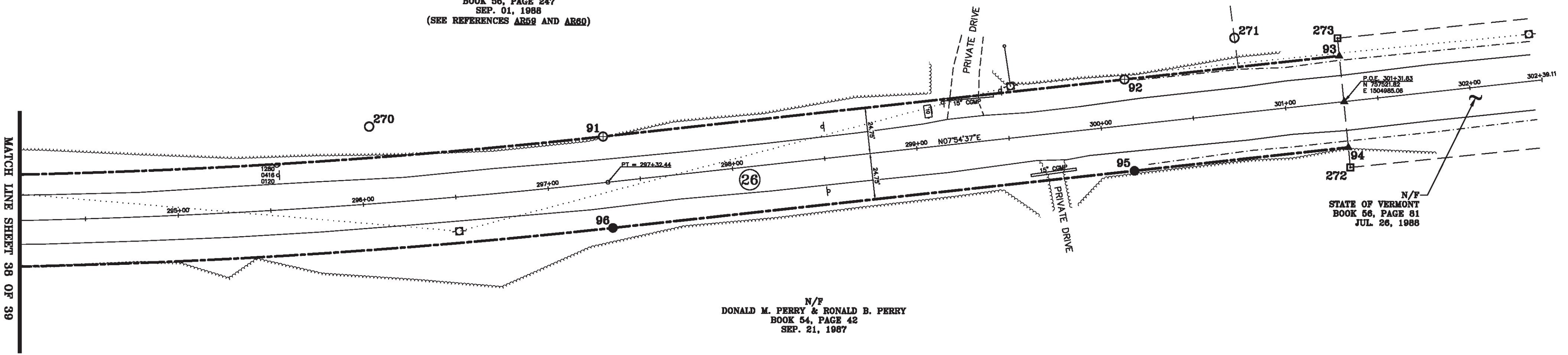
CURVE	CHORD BEARING	CHORD DISTANCE	RADIUS	LENGTH
90-91	N 11° 44' 38" E	480.74'	3595.19'	481.10'
96-97	S 11° 44' 38" W	487.36'	3644.69'	487.73'
292+48.03-297+32.44	N 11° 44' 38" E	484.05'	3619.94'	484.42'

LINE	BEARING	DISTANCE
93-94	S 81° 31' 36" E	49.50'

N/F  
KAYE ALEXANDER  
BOOK 56, PAGE 247  
SEP. 01, 1988  
(SEE REFERENCES AR59 AND AR80)

N/F  
DONALD M. PERRY &  
RONALD B. PERRY  
BOOK 54, PAGE 42  
SEP. 21, 1987

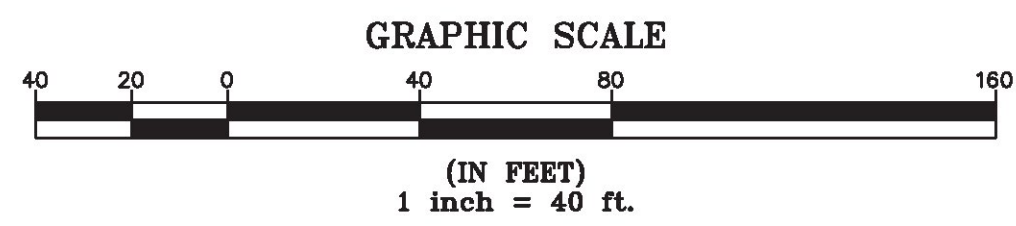
ORIGINAL DRAWING-INK ON POLYESTER FILM MEETING THE REQUIREMENTS OF 27 VSA 1403(b)(7)



N/F  
STATE OF VERMONT  
BOOK 56, PAGE 81  
JUL. 26, 1988

N/F  
DONALD M. PERRY & RONALD B. PERRY  
BOOK 54, PAGE 42  
SEP. 21, 1987

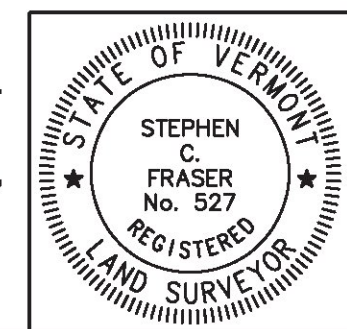
MON. NO.	DESCRIPTION	COORDINATE	STATION
91	MONUMENT TYPE "B" SET FLUSH (SEE DETAILS ON SHEET 2)	N 757129.64 E 1504905.58	297+32.44 24.75' LEFT
92	MONUMENT TYPE "B" SET FLUSH (SEE DETAILS ON SHEET 2)	N 757409.82 E 1504944.50	300+15.31 24.75' LEFT
93	UNMONUMENTED POINT	N 757525.23 E 1504960.54	301+31.83 24.75' LEFT
94	UNMONUMENTED POINT	N 757517.94 E 1505009.50	301+31.35 24.75' RIGHT
95	MONUMENT TYPE "A" SET 0.5' ABOVE GROUND (SEE DETAILS ON SHEET 2)	N 757403.01 E 1504993.53	300+15.31 24.75' RIGHT
96	MONUMENT TYPE "A" SET 0.5' ABOVE GROUND (SEE DETAILS ON SHEET 2)	N 757122.83 E 1504954.60	297+32.44 24.75' RIGHT
270	5/8" DIA. IRON ROD FOUND 0.3' ABOVE GROUND - STABLE	N 757008.68 E 1504869.56	296+06.20 41.60' LEFT
271	1/2" DIA. IRON ROD FOUND 0.5' ABOVE GROUND WITH CAP MARKED "NH LS 248 VT LS 48" - STABLE	N 757472.76 E 1504937.27	300+76.66 40.58' LEFT
272	4"x4" CONCRETE MONUMENT FOUND 0.7' ABOVE GROUND MARKED "VTHD" WITH A DRILL HOLE IN CENTER - STABLE	N 757516.34 E 1505020.22	301+31.24 35.59' RIGHT
273	4"x4" CONCRETE MONUMENT FOUND 0.7' ABOVE GROUND MARKED "VTHD" WITH A DRILL HOLE IN CENTER - STABLE	N 757526.64 E 1504951.07	301+31.93 34.32' LEFT



I certify that this plat is based on information abstracted from documents, parcel evidence, and physical evidence. The survey work identified hereon is consistent with this information.

I certify that this plat meets the requirements of 27 VSA Section 1403 and complies with Vermont Board of Land Surveyors Rules, Part 5.4 and 5.5, adopted under 26 VSA Section 2544(a)(9).

Signed: *Stephen C. Fraser*  
Stephen C. Fraser, L.S. #527



STATUTORY SURVEY  
STATE OF VERMONT  
VERMONT ROUTE 128  
ESSEX - WESTFORD  
CHITTENDEN COUNTY, VERMONT

SCALE: 1" = 40'      PLAT COMPILATION DATE: 1-19-2015  
R.O.W. WIDTH = 49.5'      PIN #: 12x602      SHEET 39 OF 39

Vermont Survey and Engineering, Inc.  
79 River Street, Montpelier, Vermont  
(802) 229-9138 ~ info@vermontsurvey.com