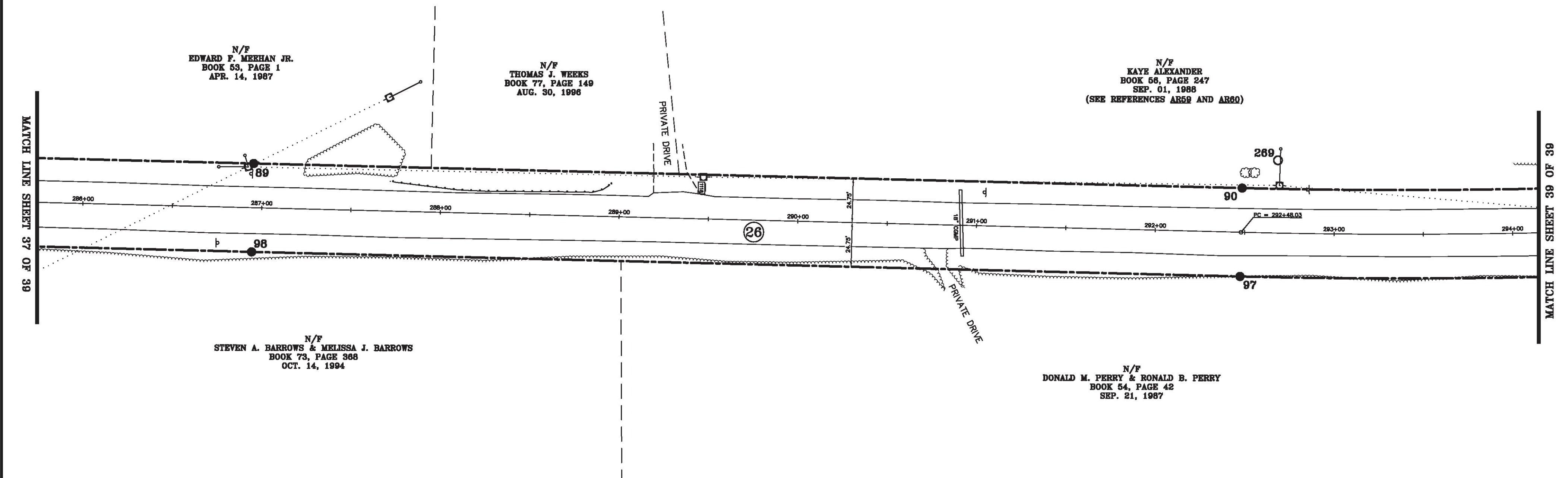
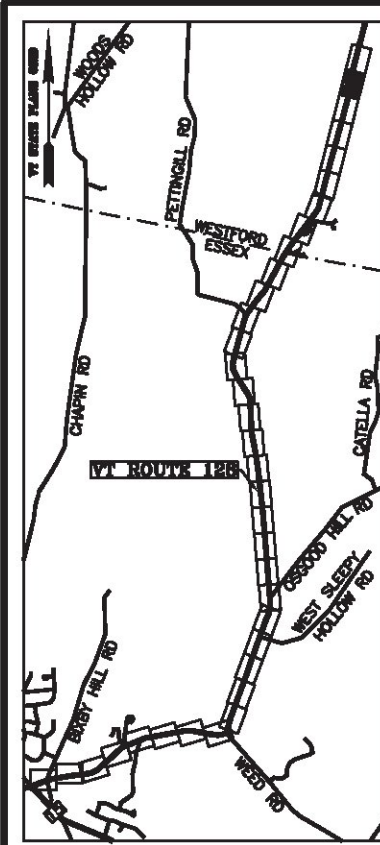


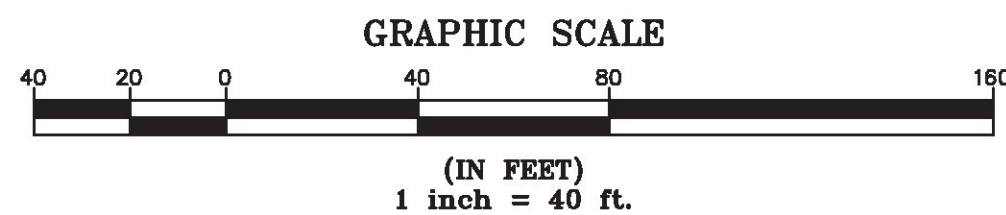
AD 88(2007)  
 BASIS OF BEARINGS & COORDINATES  
 Datum: Horizontal - NAD 83(2007) SPC (4400 FT) sPT

LINE	BEARING	DISTANCE
88-89	N 15° 34' 39" E	554.00'
89-90	N 15° 34' 39" E	553.08'
90-91	SEE CURVE TABLE	
96-97	SEE CURVE TABLE	
97-98	S 15° 34' 39" W	553.08'
98-99	S 15° 34' 39" W	554.00'

CURVE	CHORD BEARING	CHORD DISTANCE	RADIUS	LENGTH
90-91	N 11° 44' 38" E	480.74'	3595.19'	481.10'
96-97	S 11° 44' 38" W	487.36'	3644.69'	487.73'
292+48.03-297+32.44	N 11° 44' 38" E	484.05'	3619.94'	484.42'



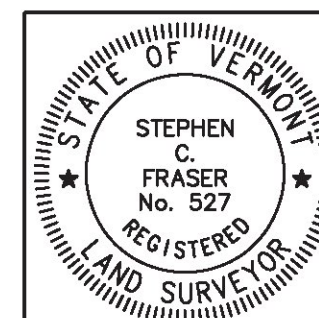
MON. NO.	DESCRIPTION	COORDINATE	STATION
89	MONUMENT TYPE "A" SET 0.5' ABOVE GROUND (SEE DETAILS ON SHEET 2)	N 756126.20 E 1504659.20	286+94.95 24.75' LEFT
90	MONUMENT TYPE "A" SET 0.5' ABOVE GROUND (SEE DETAILS ON SHEET 2)	N 756658.96 E 1504807.73	292+48.03 24.75' LEFT
97	MONUMENT TYPE "A" SET 0.5' ABOVE GROUND (SEE DETAILS ON SHEET 2)	N 756645.66 E 1504855.41	292+48.03 24.75' RIGHT
98	MONUMENT TYPE "A" SET 0.5' ABOVE GROUND (SEE DETAILS ON SHEET 2)	N 756112.90 E 1504706.88	286+94.95 24.75' RIGHT
269	5/8" DIA. IRON ROD FOUND 2.0' ABOVE GROUND - STABLE	N 756682.18 E 1504797.53	292+67.88 40.75' LEFT



I certify that this plat is based on information abstracted from documents, parol evidence, and physical evidence. The survey work identified hereon is consistent with this information.

I certify that this plat meets the requirements of 27 VSA Section 1403 and complies with Vermont Board of Land Surveyors Rules, Part 5.4 and 5.5, adopted under 26 VSA Section 2544(a)(9).

Signed: *Stephen C. Fraser*  
 Stephen C. Fraser, L.S. #527



STATUTORY SURVEY  
 STATE OF VERMONT  
 VERMONT ROUTE 128  
 ESSEX - WESTFORD  
 CHITTENDEN COUNTY, VERMONT

SCALE: 1" = 40'	PLAT COMPILATION DATE: 1-19-2015
R.O.W. WIDTH = 49.5'	PIN #: 12x602 SHEET 38 OF 39

Vermont Survey and Engineering, Inc.  
 79 River Street, Montpelier, Vermont  
 (802) 229-9138 ~ info@vermontsurvey.com

ORIGINAL DRAWING-INK ON POLYESTER FILM MEETING THE REQUIREMENTS OF 27 VSA 1403(b)(7)