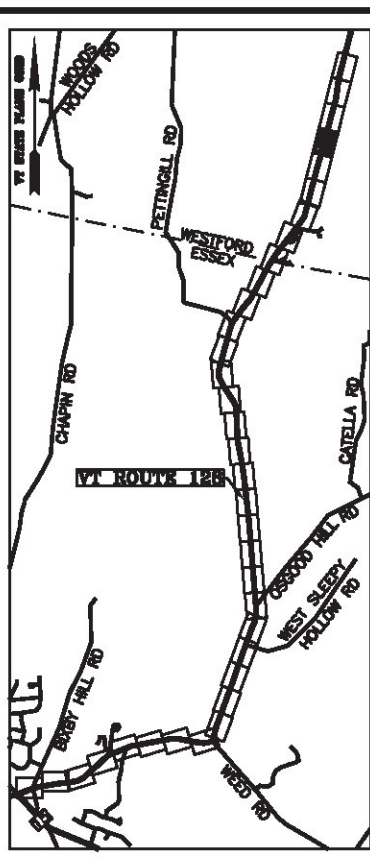


NAD 83 (1983)
 BASIS OF BEARINGS & COORDINATES
 Datum: Horizontal - NAD 83(2007) SPC (4400 VT) sFT

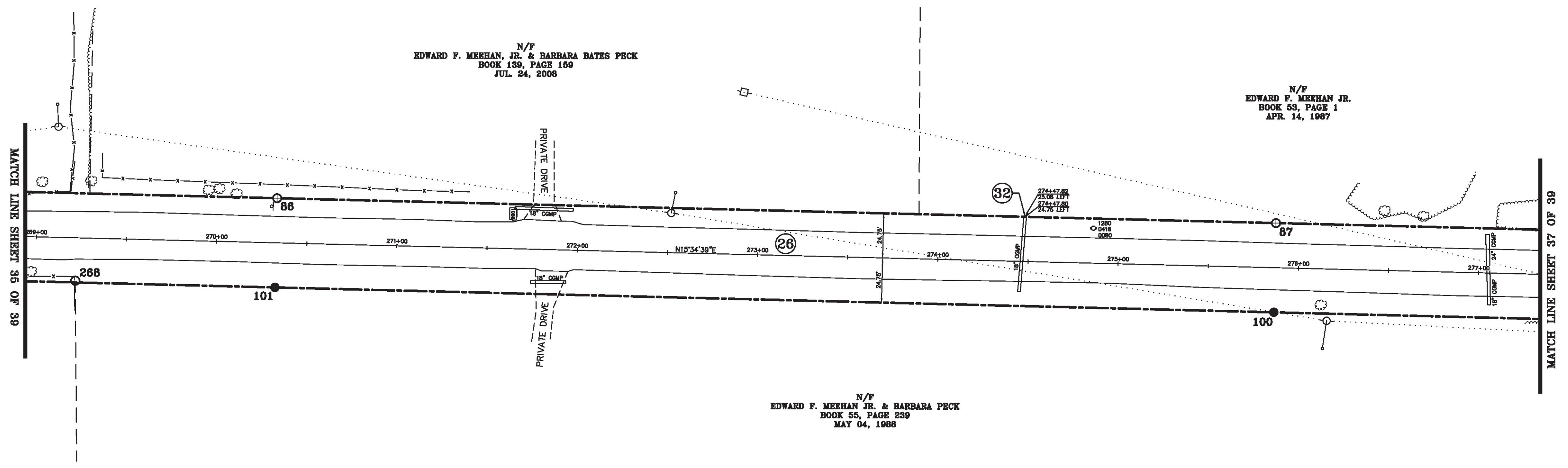


LINE	BEARING	DISTANCE
85-86	N 15° 34' 39" E	554.00'
86-87	N 15° 34' 39" E	554.00'
87-88	N 15° 34' 39" E	554.00'
99-100	S 15° 34' 39" W	554.00'
100-101	S 15° 34' 39" W	554.00'
101-102	S 15° 34' 39" W	554.00'

N/F
 EDWARD F. MEEHAN, JR. & BARBARA BATES PECK
 BOOK 139, PAGE 159
 JUL. 24, 2008

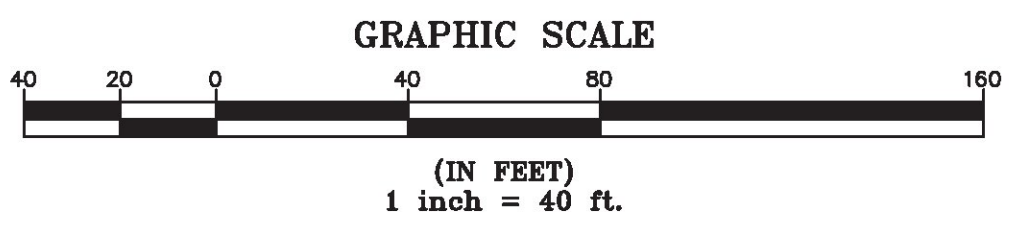
N/F
 EDWARD F. MEEHAN JR.
 BOOK 53, PAGE 1
 APR. 14, 1987

N/F
 EDWARD F. MEEHAN JR. & BARBARA PECK
 BOOK 55, PAGE 239
 MAY 04, 1988



ORIGINAL DRAWING—INK ON POLYESTER FILM MEETING THE REQUIREMENTS OF 27 VSA 1403(b)(7)

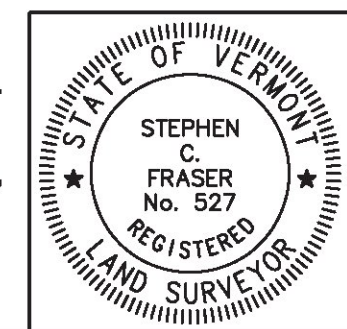
MON. NO.	DESCRIPTION	COORDINATE	STATION
86	MONUMENT TYPE "B" SET FLUSH (SEE DETAILS ON SHEET 2)	N 754525.24 E 1504212.88	270+32.95 24.75' LEFT
87	MONUMENT TYPE "B" SET FLUSH (SEE DETAILS ON SHEET 2)	N 755058.90 E 1504361.65	275+86.95 24.75' LEFT
100	MONUMENT TYPE "A" SET 0.5' ABOVE GROUND (SEE DETAILS ON SHEET 2)	N 755045.60 E 1504409.34	275+86.95 24.75' RIGHT
101	MONUMENT TYPE "A" SET 0.5' ABOVE GROUND (SEE DETAILS ON SHEET 2)	N 754511.95 E 1504260.56	270+32.95 24.75' RIGHT
268	5/8" DIA. IRON ROD FOUND 2.0' ABOVE GROUND - STABLE	N 754405.51 E 1504229.86	269+22.17 23.75' RIGHT



I certify that this plat is based on information abstracted from documents, parol evidence, and physical evidence. The survey work identified hereon is consistent with this information.

I certify that this plat meets the requirements of 27 VSA Section 1403 and complies with Vermont Board of Land Surveyors Rules, Part 5.4 and 5.5, adopted under 26 VSA Section 2544(a)(9).

Signed: *Stephen C. Fraser*
 Stephen C. Fraser, L.S. #527



STATUTORY SURVEY
STATE OF VERMONT
VERMONT ROUTE 128
 ESSEX - WESTFORD
 CHITTENDEN COUNTY, VERMONT

SCALE: 1" = 40'	PLAT COMPILATION DATE: 1-19-2015
R.O.W. WIDTH = 49.5'	PIN #: 12x602 SHEET 36 OF 39

Vermont Survey and Engineering, Inc.
 79 River Street, Montpelier, Vermont
 (802) 229-9138 ~ info@vermontsurvey.com