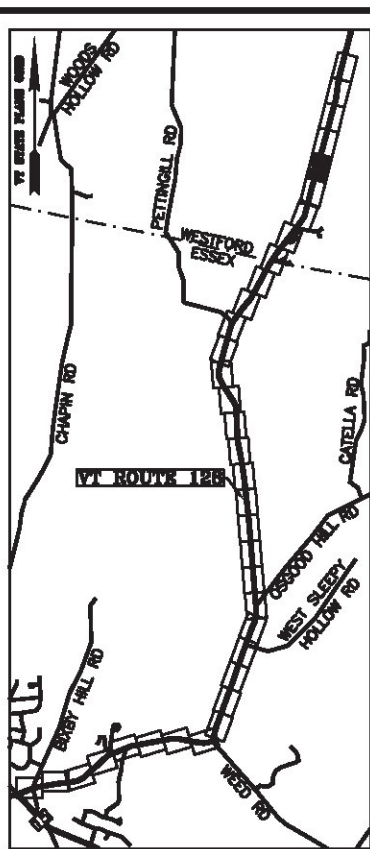


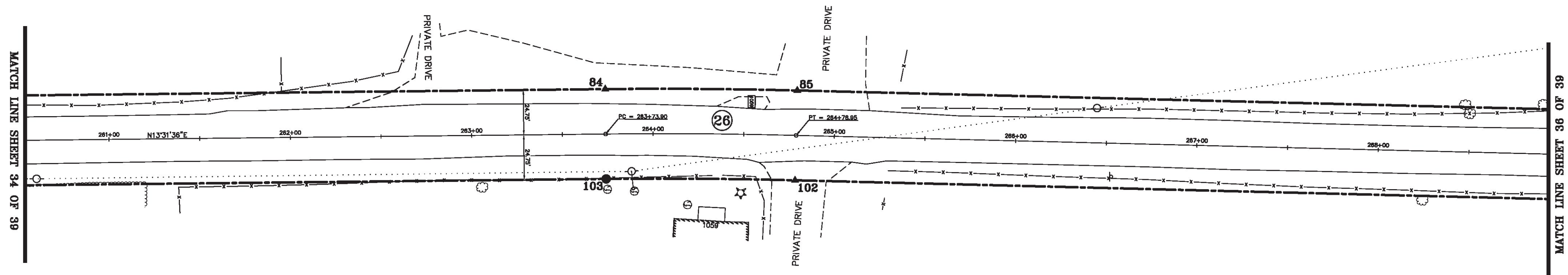
BASIS OF BEARINGS & COORDINATES
 Datum: Horizontal - NAD 83(2007) SPC (4400 VT) sFT

LINE	BEARING	DISTANCE
83-84	N 13° 31' 36" E	552.58'
84-85	SEE CURVE TABLE	
85-86	N 15° 34' 39" E	554.00'
101-102	S 15° 34' 39" W	554.00'
102-103	SEE CURVE TABLE	
103-104	S 13° 31' 36" W	552.58'

CURVE	CHORD BEARING	CHORD DISTANCE	RADIUS	LENGTH
84-85	N 14° 33' 08" E	105.93'	2959.45'	105.93'
102-103	S 14° 33' 08" W	104.16'	2909.95'	104.16'
263+73.90-264+78.95	N 14° 33' 08" E	105.04'	2934.70'	105.05'



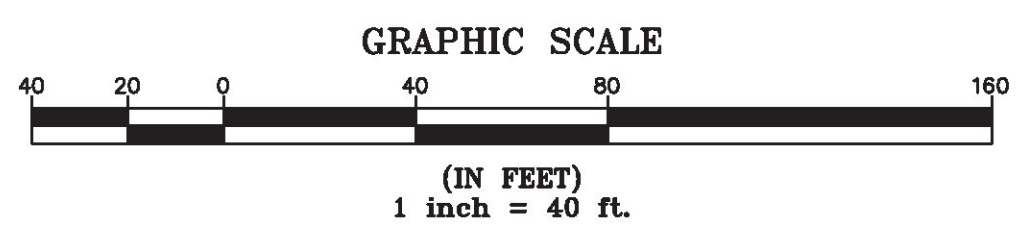
N/F
 FREDRICK HOWARD & PAULINE HOWARD
 BOOK 38, PAGE 244
 NOV. 20, 1974



N/F
 FREDRICK HOWARD & PAULINE HOWARD
 BOOK 38, PAGE 244
 NOV. 20, 1974

ORIGINAL DRAWING—INK ON POLYESTER FILM MEETING THE REQUIREMENTS OF 27 VSA 1403(b)(7)

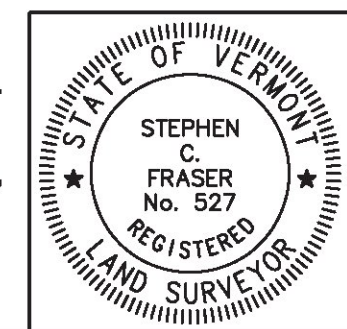
MON. NO.	DESCRIPTION	COORDINATE	STATION
84	UNMONUMENTED POINT	N 753889.07 E 1504037.49	263+73.90 24.75' LEFT
85	UNMONUMENTED POINT	N 753991.60 E 1504064.11	264+78.95 24.75' LEFT
102	UNMONUMENTED POINT	N 753978.30 E 1504111.79	264+78.95 24.75' RIGHT
103	MONUMENT TYPE "A" SET FLUSH (SEE DETAILS ON SHEET 2)	N 753877.49 E 1504085.62	263+73.90 24.75' RIGHT



I certify that this plat is based on information abstracted from documents, parol evidence, and physical evidence. The survey work identified hereon is consistent with this information.

I certify that this plat meets the requirements of 27 VSA Section 1403 and complies with Vermont Board of Land Surveyors Rules, Part 5.4 and 5.5, adopted under 26 VSA Section 2544(a)(9).

Signed: *Stephen C. Fraser*
 Stephen C. Fraser, L.S. #527



STATUTORY SURVEY
 STATE OF VERMONT
 VERMONT ROUTE 128
 ESSEX - WESTFORD
 CHITTENDEN COUNTY, VERMONT

SCALE: 1" = 40'	PLAT COMPILATION DATE: 1-19-2015
R.O.W. WIDTH = 49.5'	PIN #: 12x602 SHEET 35 OF 39

Vermont Survey and Engineering, Inc.
 79 River Street, Montpelier, Vermont
 (802) 229-9138 ~ info@vermontsurvey.com