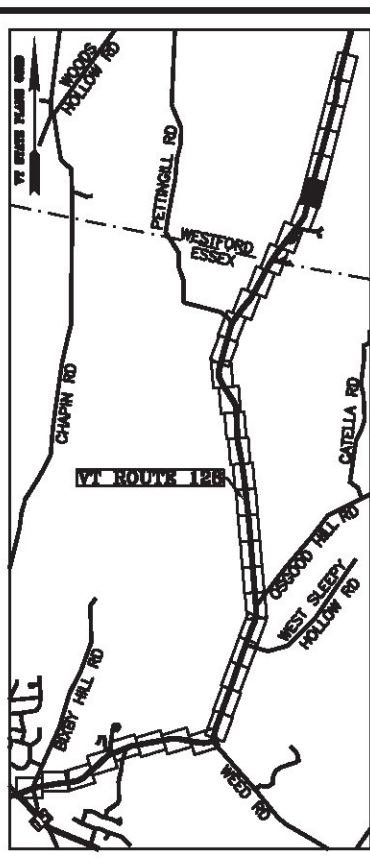


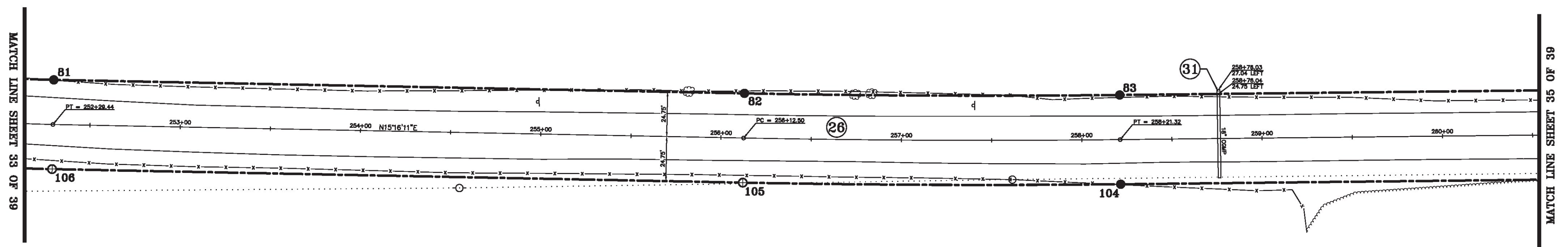
BASIS OF BEARINGS & COORDINATES
Datum: Horizontal - NAD 83(2007) SPC (4400 VT) sFT



LINE	BEARING	DISTANCE
80-81	SEE CURVE TABLE	
81-82	N 15° 16' 11" E	383.07'
82-83	SEE CURVE TABLE	
83-84	N 13° 31' 36" E	552.58'
103-104	S 13° 31' 36" W	552.58'
104-105	SEE CURVE TABLE	
105-106	S 15° 16' 11" W	383.07'
106-107	SEE CURVE TABLE	

CURVE	CHORD BEARING	CHORD DISTANCE	RADIUS	LENGTH
80-81	N 26° 30' 32" E	279.60'	717.27'	281.40'
82-83	N 14° 23' 53" E	208.06'	6839.44'	208.07'
104-105	S 14° 23' 53" W	209.57'	6888.94'	209.58'
106-107	S 26° 30' 32" W	298.89'	766.77'	300.82'
249+38.33-252+29.44	N 26° 30' 32" E	289.24'	742.02'	291.11'
256+12.50-258+21.32	N 14° 23' 53" E	208.82'	6864.19'	208.82'

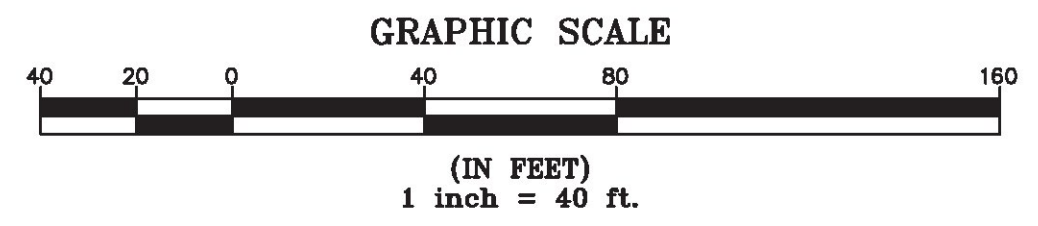
N/F
FREDRICK HOWARD & PAULINE HOWARD
BOOK 36, PAGE 244
NOV. 20, 1974



N/F
FREDRICK HOWARD & PAULINE HOWARD
BOOK 36, PAGE 244
NOV. 20, 1974

ORIGINAL DRAWING-INK ON POLYESTER FILM MEETING THE REQUIREMENTS OF 27 VSA 1403(b)(7)

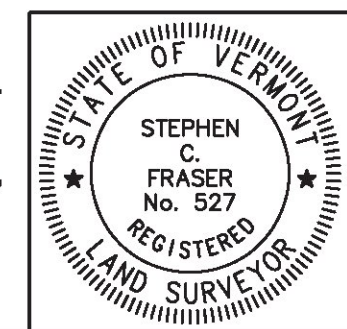
MON. NO.	DESCRIPTION	COORDINATE	STATION
81	MONUMENT TYPE "A" SET 0.5' ABOVE GROUND (SEE DETAILS ON SHEET 2)	N 752780.75 E 1503755.62	252+29.44 24.75' LEFT
82	MONUMENT TYPE "A" SET 0.5' ABOVE GROUND (SEE DETAILS ON SHEET 2)	N 753150.29 E 1503856.51	256+12.50 24.75' LEFT
83	MONUMENT TYPE "A" SET 0.5' ABOVE GROUND (SEE DETAILS ON SHEET 2)	N 753351.82 E 1503908.25	258+21.32 24.75' LEFT
104	MONUMENT TYPE "A" SET FLUSH (SEE DETAILS ON SHEET 2)	N 753340.24 E 1503956.37	258+21.32 24.75' RIGHT
105	MONUMENT TYPE "B" SET FLUSH (SEE DETAILS ON SHEET 2)	N 753137.25 E 1503904.26	256+12.50 24.75' RIGHT
106	MONUMENT TYPE "B" SET FLUSH (SEE DETAILS ON SHEET 2)	N 752767.71 E 1503803.38	252+29.44 24.75' RIGHT



I certify that this plat is based on information abstracted from documents, parcel evidence, and physical evidence. The survey work identified hereon is consistent with this information.

I certify that this plat meets the requirements of 27 VSA Section 1403 and complies with Vermont Board of Land Surveyors Rules, Part 5.4 and 5.5, adopted under 26 VSA Section 2544(a)(9).

Signed: *Stephen C. Fraser*
Stephen C. Fraser, L.S. #527



STATUTORY SURVEY
STATE OF VERMONT
VERMONT ROUTE 128
ESSEX - WESTFORD
CHITTENDEN COUNTY, VERMONT

SCALE: 1"= 40' | PLAT COMPILATION DATE: 1-19-2015
R.O.W. WIDTH = 49.5' | PIN #: 12x602 | SHEET 34 OF 39

Vermont Survey and Engineering, Inc.
79 River Street, Montpelier, Vermont
(802) 229-9138 ~ info@vermontsurvey.com