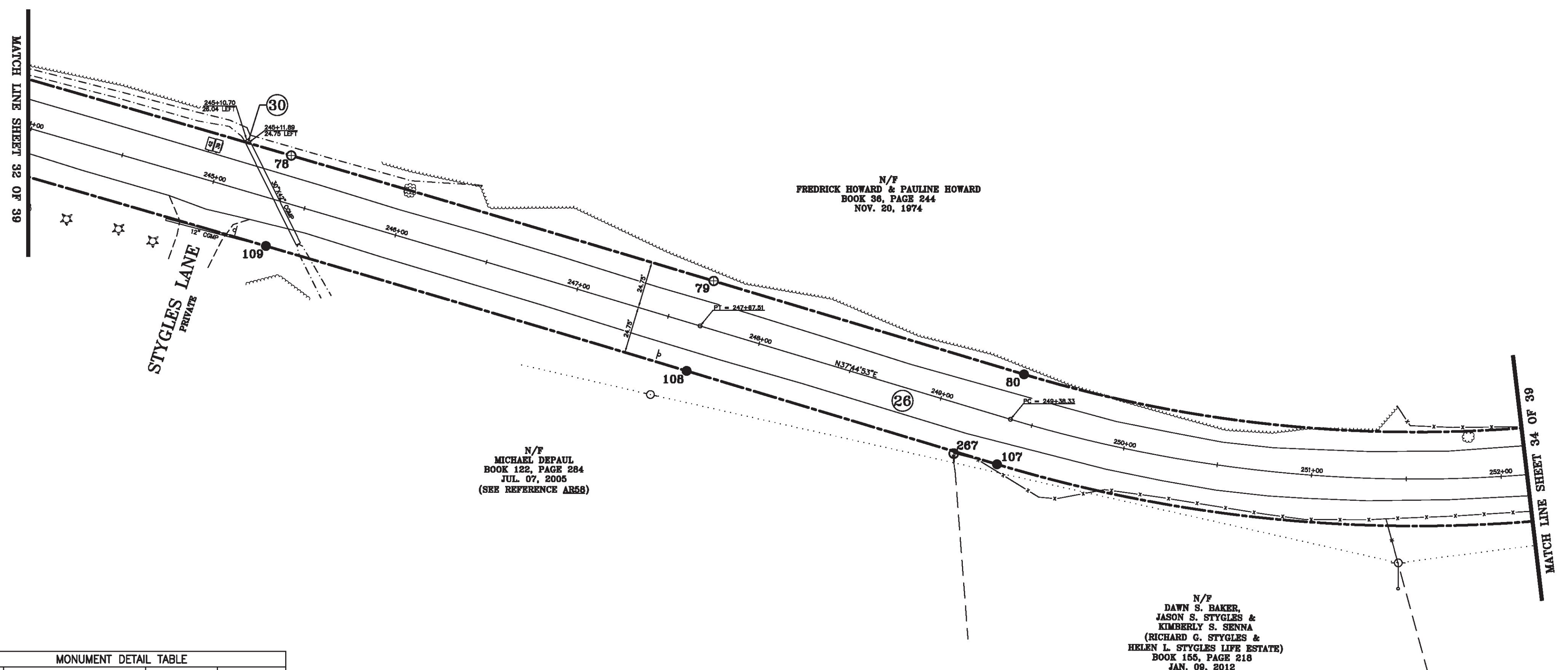
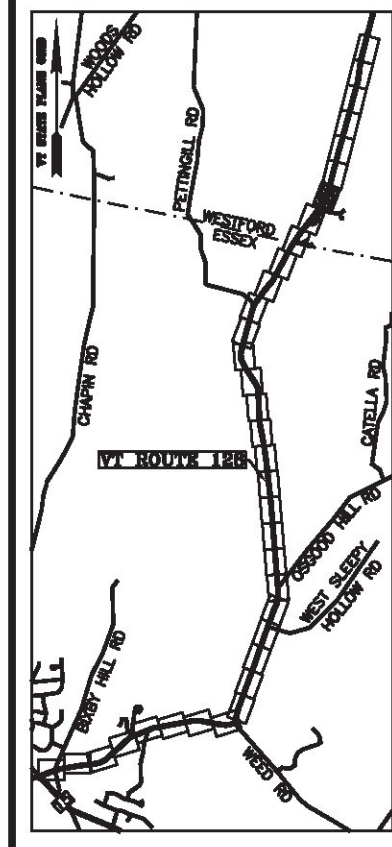


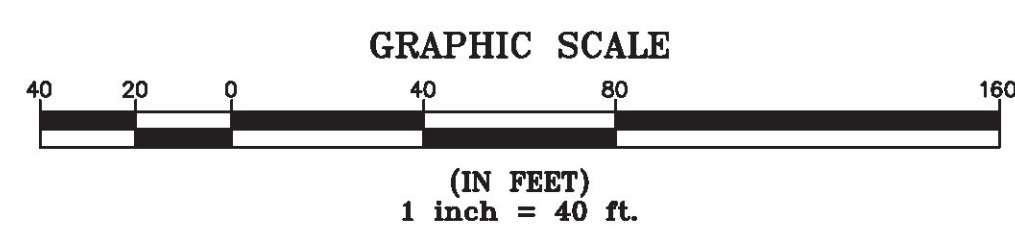
BASIS OF BEARINGS & COORDINATES
 Datum: Horizontal - NAD 83(2011) SPC (4400 VT) sFT

LINE	BEARING	DISTANCE
77-78	SEE CURVE TABLE	
78-79	SEE CURVE TABLE	
79-80	N 37° 44' 53" E	170.81'
80-81	SEE CURVE TABLE	
106-107	SEE CURVE TABLE	
107-108	S 37° 44' 53" W	170.81'
108-109	SEE CURVE TABLE	
109-110	SEE CURVE TABLE	

CURVE	CHORD BEARING	CHORD DISTANCE	RADIUS	LENGTH
77-78	N 37° 00' 10" E	366.00'	31925.94'	366.00'
78-79	N 37° 32' 23" E	232.20'	31925.94'	232.20'
80-81	N 26° 30' 32" E	279.60'	717.27'	281.40'
106-107	S 26° 30' 32" W	298.89'	766.77'	300.82'
108-109	S 37° 32' 24" W	231.28'	31876.44'	231.28'
109-110	S 37° 00' 12" W	366.00'	31876.44'	366.00'
241+69.77-247+67.51	N 37° 12' 40" E	597.73'	31901.19'	597.74'
249+38.33-252+29.44	N 26° 30' 32" E	289.24'	742.02'	291.11'



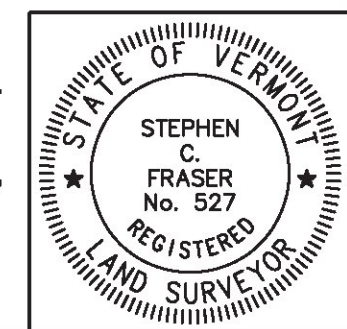
MONUMENT DETAIL TABLE			
MON. NO.	DESCRIPTION	COORDINATE	STATION
78	MONUMENT TYPE "B" SET FLUSH (SEE DETAILS ON SHEET 2)	N 752211.36 E 1503384.78	245+35.49 24.75' LEFT
79	MONUMENT TYPE "B" SET FLUSH (SEE DETAILS ON SHEET 2)	N 752395.48 E 1503526.26	247+67.51 24.75' LEFT
80	MONUMENT TYPE "A" SET 0.5' ABOVE GROUND (SEE DETAILS ON SHEET 2)	N 752530.54 E 1503630.83	249+38.33 24.75' LEFT
107	MONUMENT TYPE "A" SET 0.5' ABOVE GROUND (SEE DETAILS ON SHEET 2)	N 752500.24 E 1503669.97	249+38.33 24.75' RIGHT
108	MONUMENT TYPE "A" SET 0.5' ABOVE GROUND (SEE DETAILS ON SHEET 2)	N 752365.18 E 1503565.40	247+67.51 24.75' RIGHT
109	MONUMENT TYPE "A" SET 0.5' ABOVE GROUND (SEE DETAILS ON SHEET 2)	N 752181.79 E 1503424.48	245+36.06 24.75' RIGHT
267	1/2" DIA. IRON ROD FOUND 2.7' ABOVE GROUND - BENT & STABLE	N 752480.99 E 1503656.55	249+14.89 25.93' RIGHT



I certify that this plat is based on information abstracted from documents, parol evidence, and physical evidence. The survey work identified hereon is consistent with this information.

I certify that this plat meets the requirements of 27 VSA Section 1403 and complies with Vermont Board of Land Surveyors Rules, Part 5.4 and 5.5, adopted under 26 VSA Section 2544(a)(9).

Signed: *Stephen C. Fraser*
 Stephen C. Fraser, L.S. #527



STATUTORY SURVEY
 STATE OF VERMONT
 VERMONT ROUTE 128
 ESSEX - WESTFORD
 CHITTENDEN COUNTY, VERMONT

SCALE: 1" = 40' PLAT COMPILATION DATE: 1-19-2015
 R.O.W. WIDTH = 49.5' PIN #: 12x602 SHEET 33 OF 39

Vermont Survey and Engineering, Inc.
 79 River Street, Montpelier, Vermont
 (802) 229-9138 ~ info@vermontsurvey.com

ORIGINAL DRAWING-INK ON POLYESTER FILM MEETING THE REQUIREMENTS OF 27 VSA 1403(b)(7)