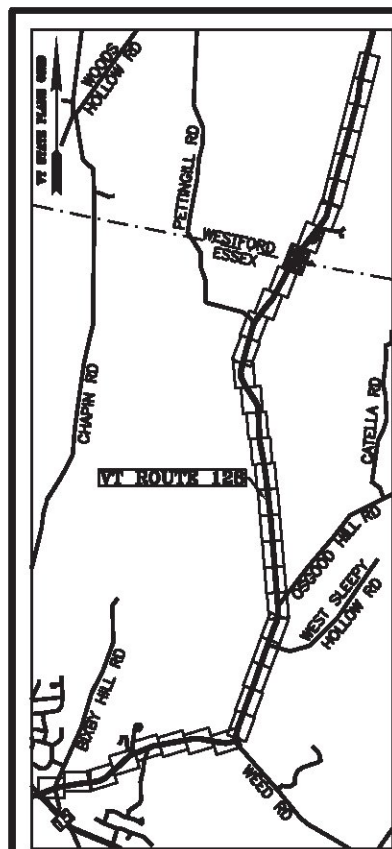


BASIS OF BEARINGS & COORDINATES  
 Datum: Horizontal - NAD 83(2007) SPC (4400 VI) sFT

LINE	BEARING	DISTANCE
72-73	SEE CURVE TABLE	
73-74	N 30° 22' 20" E	138.13'
74-75	SEE CURVE TABLE	
75-76	N 36° 40' 28" E	398.94'
111-112	S 36° 40' 28" W	398.94'
112-113	SEE CURVE TABLE	
113-114	S 30° 22' 20" W	138.13'
114-115	SEE CURVE TABLE	

CURVE	CHORD BEARING	CHORD DISTANCE	RADIUS	LENGTH
72-73	N 28° 49' 14" E	497.58'	9188.58'	497.64'
74-75	N 33° 31' 24" E	300.85'	2736.53'	301.00'
112-113	S 33° 31' 24" W	295.41'	2687.03'	295.56'
114-115	S 28° 49' 14" W	494.90'	9139.08'	494.96'
225+18.44-230+14.74	N 28° 49' 14" E	496.24'	9163.83'	496.30'
231+52.87-234+51.15	N 33° 31' 24" E	298.13'	2711.78'	298.28'

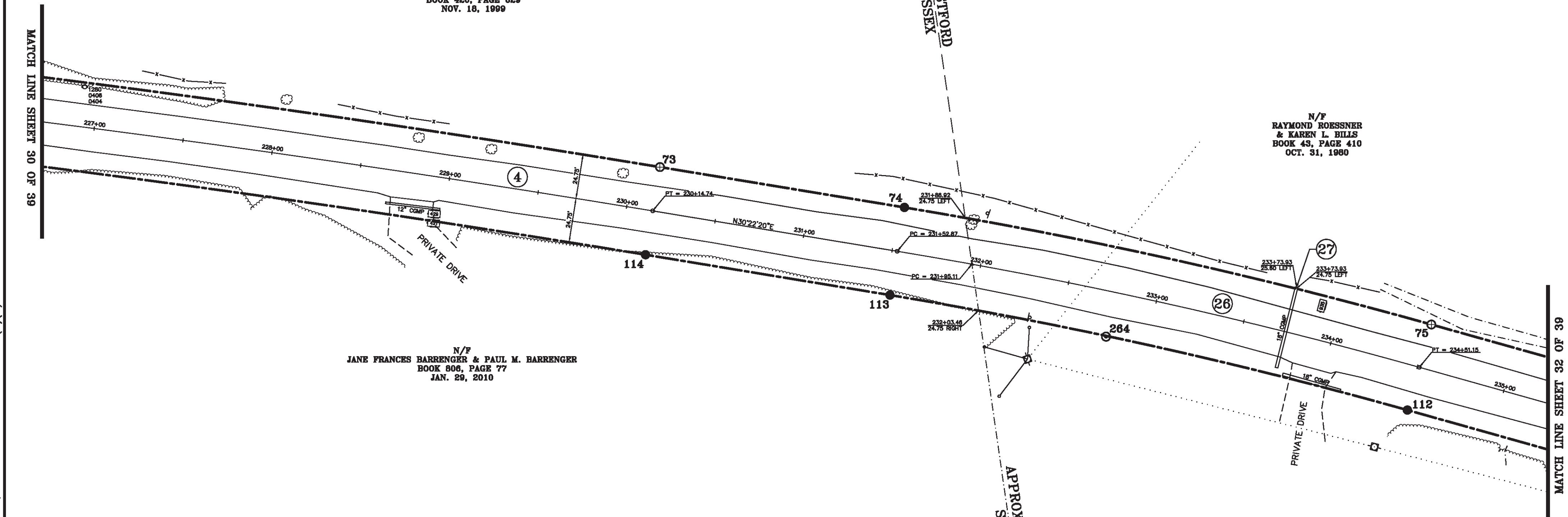


N/F  
 JAMES ANDERSON & FRANCES ANDERSON  
 BOOK 420, PAGE 629  
 NOV. 18, 1999

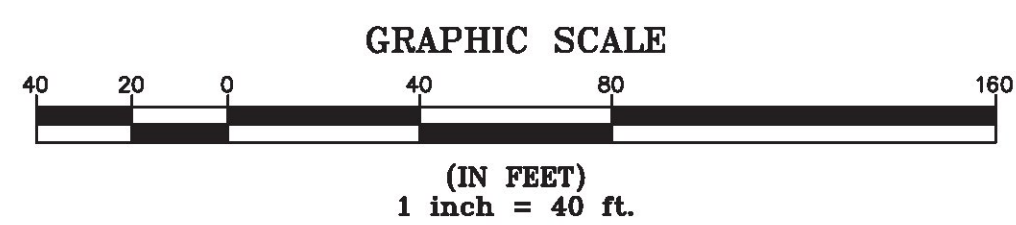
N/F  
 RAYMOND ROESSNER  
 & KAREN L. BILLS  
 BOOK 43, PAGE 410  
 OCT. 31, 1980

N/F  
 JANE FRANCES BARRINGER & PAUL M. BARRINGER  
 BOOK 806, PAGE 77  
 JAN. 29, 2010

N/F  
 ZONKER K. WHITE  
 BOOK 156, PAGE 3  
 APR. 30, 2012  
 (SEE REFERENCE AR58)



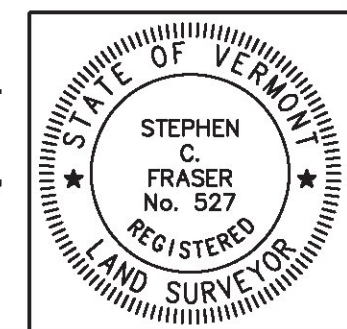
MON. NO.	DESCRIPTION	COORDINATE	STATION
73	MONUMENT TYPE "B" SET FLUSH (SEE DETAILS ON SHEET 2)	N 750972.72 E 1502499.30	230+14.74 24.75' LEFT
74	MONUMENT TYPE "A" SET FLUSH (SEE DETAILS ON SHEET 2)	N 751091.89 E 1502569.14	231+52.87 24.75' LEFT
75	MONUMENT TYPE "A" SET FLUSH (SEE DETAILS ON SHEET 2)	N 751342.70 E 1502735.29	234+51.15 24.75' LEFT
112	MONUMENT TYPE "A" SET 0.5' ABOVE GROUND (SEE DETAILS ON SHEET 2)	N 751313.14 E 1502774.99	234+51.15 24.75' RIGHT
113	MONUMENT TYPE "A" SET 0.3' ABOVE GROUND (SEE DETAILS ON SHEET 2)	N 751066.87 E 1502611.84	231+52.87 24.75' RIGHT
114	MONUMENT TYPE "A" SET 0.5' ABOVE GROUND (SEE DETAILS ON SHEET 2)	N 750947.70 E 1502542.00	230+14.74 24.75' RIGHT
264	1" O.D. IRON PIPE FOUND BENT & UNSTABLE	N 751170.99 E 1502676.60	232+76.64 25.18' RIGHT



I certify that this plat is based on information abstracted from documents, parol evidence, and physical evidence. The survey work identified hereon is consistent with this information.

I certify that this plat meets the requirements of 27 VSA Section 1403 and complies with Vermont Board of Land Surveyors Rules, Part 5.4 and 5.5, adopted under 26 VSA Section 2544(a)(9).

Signed: *Stephen C. Fraser*  
 Stephen C. Fraser, L.S. #527



STATUTORY SURVEY  
 STATE OF VERMONT  
 VERMONT ROUTE 128  
 ESSEX - WESTFORD  
 CHITTENDEN COUNTY, VERMONT

SCALE: 1" = 40' | PLAT COMPILATION DATE: 1-19-2015  
 R.O.W. WIDTH = 49.5' | PIN #: 12x602 | SHEET 31 OF 39

Vermont Survey and Engineering, Inc.  
 79 River Street, Montpelier, Vermont  
 (802) 229-9138 ~ info@vermontsurvey.com

ORIGINAL DRAWING-INK ON POLYESTER FILM MEETING THE REQUIREMENTS OF 27 VSA 1403(b)(7)