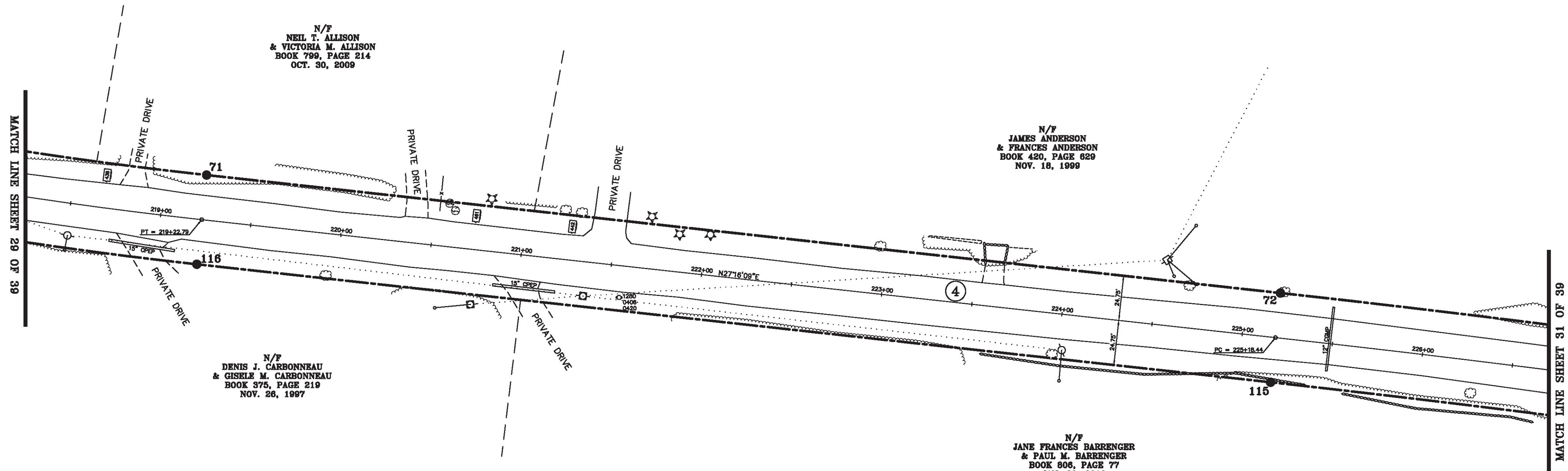
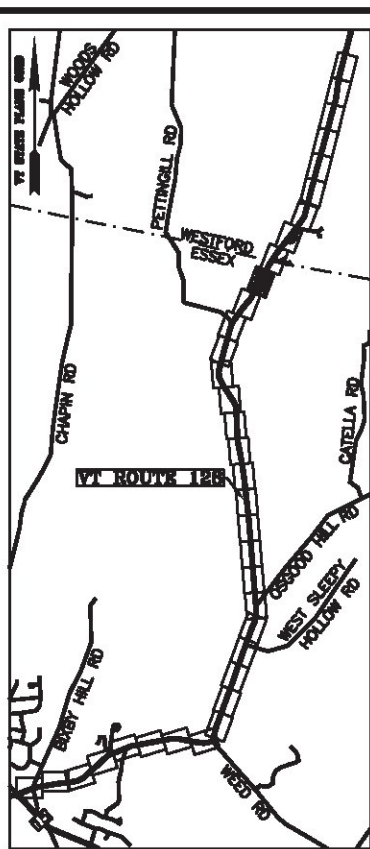


BASIS OF BEARINGS & COORDINATES
Datum: Horizontal - NAD 83(2007) SPC (4400 YR) sft

LINE	BEARING	DISTANCE
70-71	SEE CURVE TABLE	
71-72	N 27° 16' 09" E	595.66'
72-73	SEE CURVE TABLE	
114-115	SEE CURVE TABLE	
115-116	S 27° 16' 09" W	595.66'
116-117	SEE CURVE TABLE	

CURVE	CHORD BEARING	CHORD DISTANCE	RADIUS	LENGTH
70-71	N 28° 34' 24" E	111.74'	2454.87'	111.75'
72-73	N 28° 49' 14" E	497.58'	9188.58'	497.64'
114-115	S 28° 49' 14" W	494.90'	9139.08'	494.96'
116-117	S 28° 34' 24" W	114.00'	2504.37'	114.01'
218+09.91-219+22.79	N 28° 34' 24" E	112.87'	2479.62'	112.88'
225+18.44-230+14.74	N 28° 49' 14" E	496.24'	9163.83'	496.30'



N/F
NEIL T. ALLISON
& VICTORIA M. ALLISON
BOOK 799, PAGE 214
OCT. 30, 2009

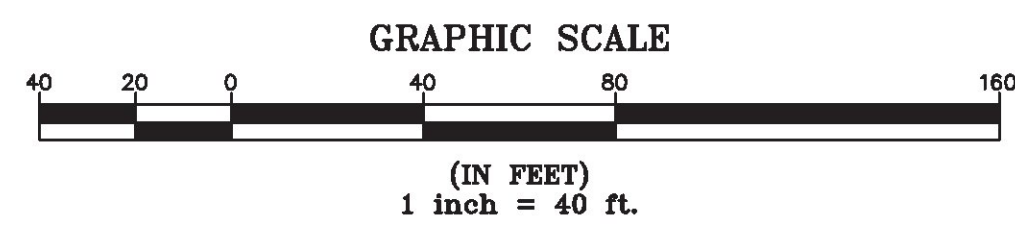
N/F
JAMES ANDERSON
& FRANCES ANDERSON
BOOK 420, PAGE 629
NOV. 18, 1999

N/F
DENIS J. CARBONNEAU
& GISELE M. CARBONNEAU
BOOK 375, PAGE 219
NOV. 26, 1997

N/F
JANE FRANCES BARRENGER
& PAUL M. BARRENGER
BOOK 806, PAGE 77
JAN. 29, 2010

ORIGINAL DRAWING-INK ON POLYESTER FILM MEETING THE REQUIREMENTS OF 27 VSA 1403(b)(7)

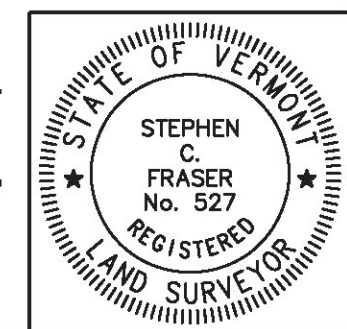
MONUMENT DETAIL TABLE			
MON. NO.	DESCRIPTION	COORDINATE	STATION
71	MONUMENT TYPE "A" SET 0.5' ABOVE GROUND (SEE DETAILS ON SHEET 2)	N 750007.32 E 1501986.52	219+22.79 24.75' LEFT
72	MONUMENT TYPE "A" SET 0.5' ABOVE GROUND (SEE DETAILS ON SHEET 2)	N 750536.78 E 1502259.43	225+18.44 24.75' LEFT
115	MONUMENT TYPE "A" SET 0.5' ABOVE GROUND (SEE DETAILS ON SHEET 2)	N 750514.10 E 1502303.43	225+18.44 24.75' RIGHT
116	MONUMENT TYPE "A" SET 0.5' ABOVE GROUND (SEE DETAILS ON SHEET 2)	N 749984.64 E 1502030.52	219+22.79 24.75' RIGHT



I certify that this plat is based on information abstracted from documents, parcel evidence, and physical evidence. The survey work identified hereon is consistent with this information.

I certify that this plat meets the requirements of 27 VSA Section 1403 and complies with Vermont Board of Land Surveyors Rules, Part 5.4 and 5.5, adopted under 26 VSA Section 2544(a)(9).

Signed: *Stephen C. Fraser*
Stephen C. Fraser, L.S. #527



STATUTORY SURVEY
STATE OF VERMONT
VERMONT ROUTE 128
ESSEX - WESTFORD
CHITTENDEN COUNTY, VERMONT

SCALE: 1" = 40'	PLAT COMPILATION DATE: 1-19-2015
R.O.W. WIDTH = 49.5'	PIN #: 12x602 SHEET 30 OF 39

Vermont Survey and Engineering, Inc.
79 River Street, Montpelier, Vermont
(802) 229-9138 ~ info@vermontsurvey.com