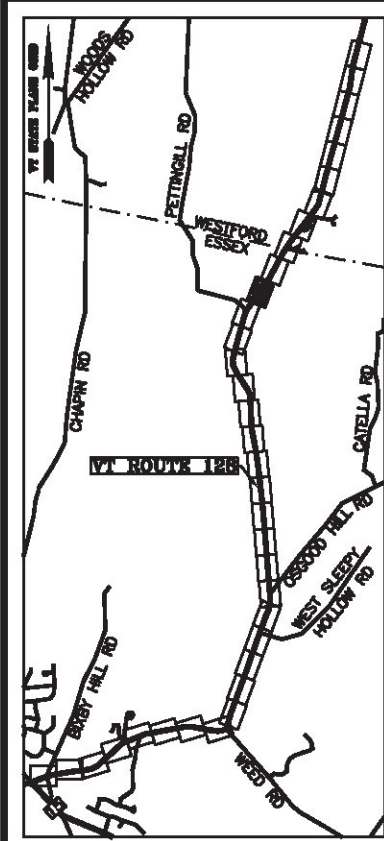


BASIS OF BEARINGS & COORDINATES
 Datum: Horizontal - NAD 83(2007) SPC (4400 FT) sft



LINE	BEARING	DISTANCE
65-66	N 34° 45' 41" E	399.93'
66-67	SEE CURVE TABLE	
67-68	N 44° 14' 13" E	112.29'
68-69	SEE CURVE TABLE	
69-70	N 29° 52' 39" E	94.79'
116-117	SEE CURVE TABLE	
117-118	S 29° 52' 39" W	94.79'
118-119	SEE CURVE TABLE	
119-120	S 44° 14' 13" W	112.29'
120-121	SEE CURVE TABLE	
121-122	S 34° 45' 41" W	399.93'

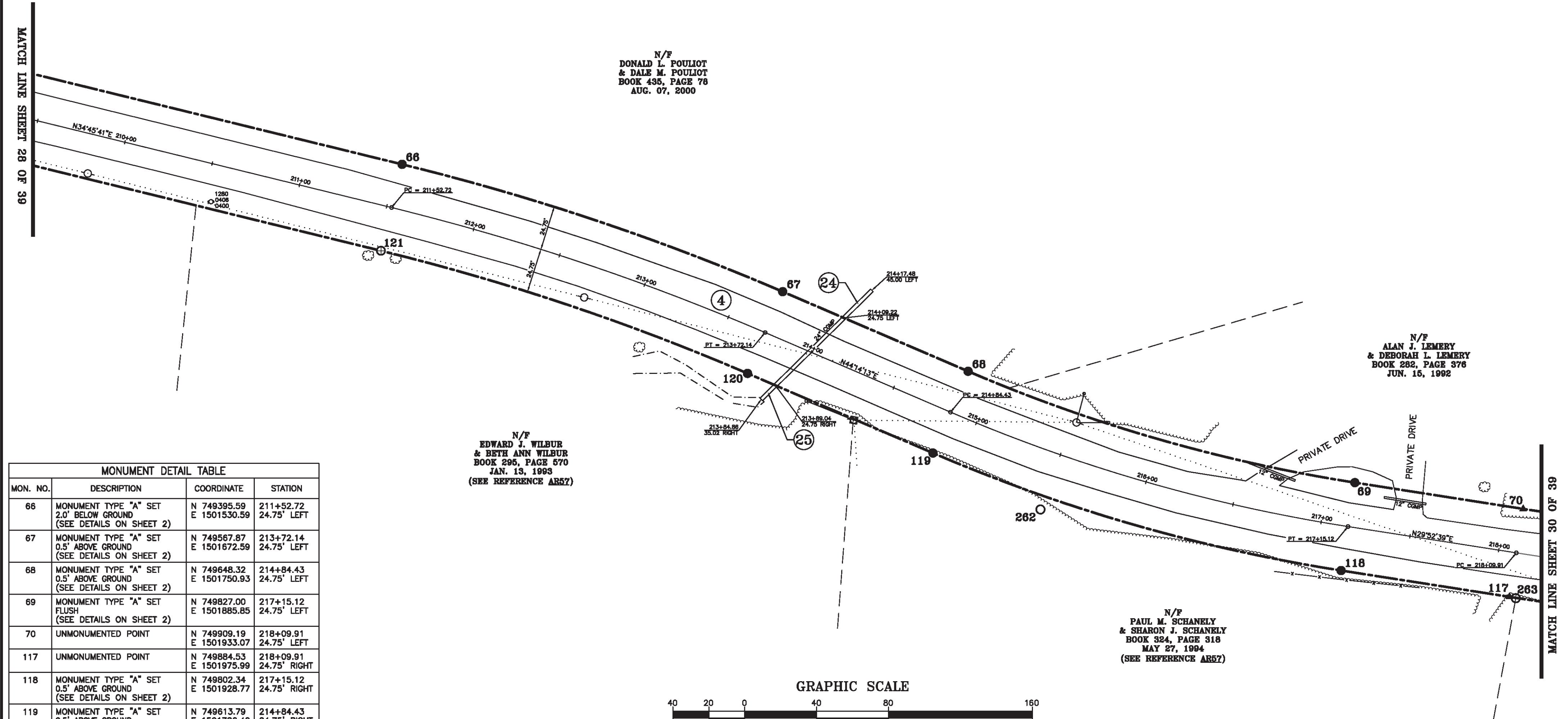
CURVE	CHORD BEARING	CHORD DISTANCE	RADIUS	LENGTH
66-67	N 39° 29' 57" E	223.26'	1351.50'	223.51'
68-69	N 37° 03' 26" E	223.89'	895.70'	224.48'
70-71	N 28° 34' 24" E	111.74'	2454.87'	111.75'
116-117	N 28° 34' 24" W	114.00'	2504.37'	114.01'
118-119	S 37° 03' 26" W	236.27'	945.20'	236.89'
120-121	S 39° 29' 57" W	215.08'	1302.00'	215.33'
211+52.72-213+72.14	N 39° 29' 57" E	219.17'	1326.75'	219.42'
214+84.43-217+15.12	N 37° 03' 26" E	230.08'	920.45'	230.68'
218+09.91-219+22.79	N 28° 34' 24" E	112.87'	2479.62'	112.88'

N/F
 DONALD L. POULIOT
 & DALE M. POULIOT
 BOOK 435, PAGE 78
 AUG. 07, 2000

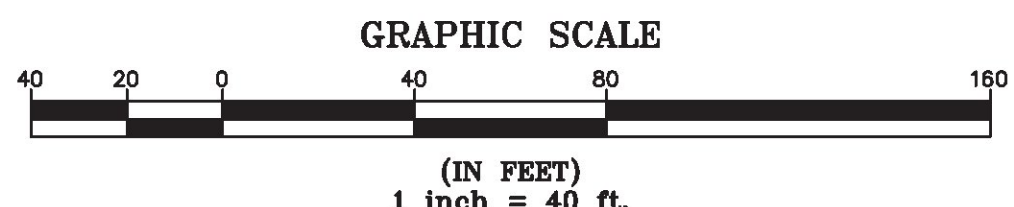
N/F
 EDWARD J. WILBUR
 & BETH ANN WILBUR
 BOOK 295, PAGE 570
 JAN. 13, 1993
 (SEE REFERENCE A857)

N/F
 ALAN J. LEMERY
 & DEBORAH L. LEMERY
 BOOK 282, PAGE 376
 JUN. 15, 1992

N/F
 PAUL M. SCHANELY
 & SHARON J. SCHANELY
 BOOK 324, PAGE 318
 MAY 27, 1994
 (SEE REFERENCE A857)



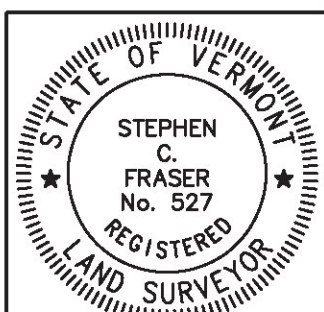
MON. NO.	DESCRIPTION	COORDINATE	STATION
66	MONUMENT TYPE "A" SET 2.0' BELOW GROUND (SEE DETAILS ON SHEET 2)	N 749395.59 E 1501530.59	211+52.72 24.75' LEFT
67	MONUMENT TYPE "A" SET 0.5' ABOVE GROUND (SEE DETAILS ON SHEET 2)	N 749567.87 E 1501672.59	213+72.14 24.75' LEFT
68	MONUMENT TYPE "A" SET 0.5' ABOVE GROUND (SEE DETAILS ON SHEET 2)	N 749648.32 E 1501750.93	214+84.43 24.75' LEFT
69	MONUMENT TYPE "A" SET FLUSH (SEE DETAILS ON SHEET 2)	N 749827.00 E 1501885.85	217+15.12 24.75' LEFT
70	UNMONUMENTED POINT	N 749909.19 E 1501933.07	218+09.91 24.75' LEFT
117	UNMONUMENTED POINT	N 749884.53 E 1501975.99	218+09.91 24.75' RIGHT
118	MONUMENT TYPE "A" SET 0.5' ABOVE GROUND (SEE DETAILS ON SHEET 2)	N 749802.34 E 1501928.77	217+15.12 24.75' RIGHT
119	MONUMENT TYPE "A" SET 0.5' ABOVE GROUND (SEE DETAILS ON SHEET 2)	N 749613.79 E 1501786.40	214+84.43 24.75' RIGHT
120	MONUMENT TYPE "A" SET 0.5' ABOVE GROUND (SEE DETAILS ON SHEET 2)	N 749533.34 E 1501708.06	213+72.14 24.75' RIGHT
121	MONUMENT TYPE "B" SET FLUSH (SEE DETAILS ON SHEET 2)	N 749367.37 E 1501571.25	211+52.72 24.75' RIGHT
262	1/2" DIA. IRON ROD FOUND 0.5' ABOVE GROUND WITH CAP MARKED "PALCO LTD LS 498" STABLE	N 749658.35 E 1501837.13	215+49.52 32.39' RIGHT
263	1/2" DIA. IRON ROD FOUND 1.0' ABOVE GROUND WITH CAP MARKED "PALCO LTD LS 498" BENT & STABLE	N 749887.55 E 1501977.99	218+13.49 24.98' RIGHT



I certify that this plat is based on information abstracted from documents, parol evidence, and physical evidence. The survey work identified hereon is consistent with this information.

I certify that this plat meets the requirements of 27 VSA Section 1403 and complies with Vermont Board of Land Surveyors Rules, Part 5.4 and 5.5, adopted under 26 VSA Section 2544(a)(9).

Signed: *Stephen C. Fraser*
 Stephen C. Fraser, L.S. #527



STATUTORY SURVEY
 STATE OF VERMONT
 VERMONT ROUTE 128
 ESSEX - WESTFORD
 CHITTENDEN COUNTY, VERMONT

SCALE: 1" = 40' | PLAT COMPILATION DATE: 1-19-2015
 R.O.W. WIDTH = 49.5' | PIN #: 12x602 | SHEET 29 OF 39

Vermont Survey and Engineering, Inc.
 79 River Street, Montpelier, Vermont
 (802) 229-9138 ~ info@vermontsurvey.com

ORIGINAL DRAWING-INK ON POLYESTER FILM MEETING THE REQUIREMENTS OF 27 VSA 1403(b)(7)

MATCH LINE SHEET 28 OF 39

MATCH LINE SHEET 30 OF 39