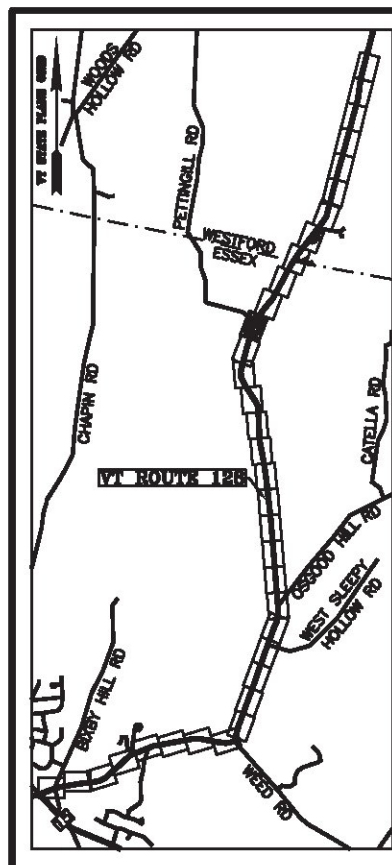


Ed. 68 (2007)
 BASIS OF BEARINGS & COORDINATES
 Datum: Horizontal - NAD 83(2007) SFC (4400 FT) sFT

LINE	BEARING	DISTANCE
63-64	N 14° 17' 51" E	645.98'
64-65	SEE CURVE TABLE	
65-66	N 34° 45' 41" E	399.93'
121-122	S 34° 45' 41" W	399.93'
122-123	SEE CURVE TABLE	
123-124	S 14° 17' 51" W	645.98'

CURVE	CHORD BEARING	CHORD DISTANCE	RADIUS	LENGTH
64-65	N 24° 31' 46" E	259.27'	729.78'	260.65'
122-123	S 24° 31' 46" W	241.68'	680.28'	242.97'
205+00.98-207+52.79	N 24° 31' 46" E	250.47'	705.03'	251.81'



N/F
 FREDERICK C. A. BROSS
 BOOK 392, PAGE 427
 DEC. 21, 1994
 (SEE REFERENCES AR54 AND AR55)

N/F
 DONALD L. POULIOT
 & DALE M. POULIOT
 BOOK 435, PAGE 78
 AUG. 07, 2000

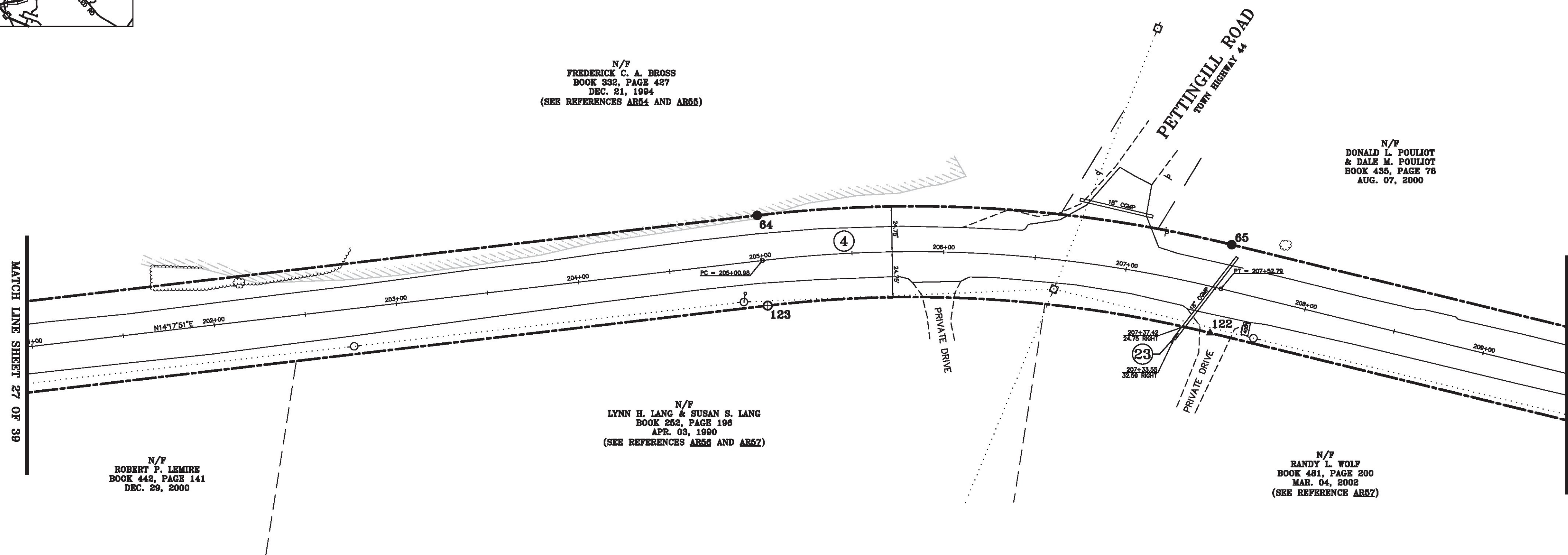
N/F
 LYNN H. LANG & SUSAN S. LANG
 BOOK 252, PAGE 196
 APR. 03, 1990
 (SEE REFERENCES AR56 AND AR57)

N/F
 ROBERT P. LEMIRE
 BOOK 442, PAGE 141
 DEC. 29, 2000

N/F
 RANDY L. WOLF
 BOOK 481, PAGE 200
 MAR. 04, 2002
 (SEE REFERENCE AR57)

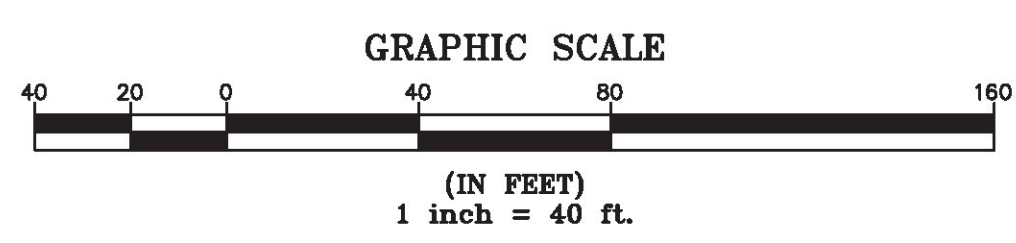
MATCH LINE SHEET 27 OF 39

MATCH LINE SHEET 29 OF 39



ORIGINAL DRAWING—INK ON POLYESTER FILM MEETING THE REQUIREMENTS OF 27 VSA 1403(b)(7)

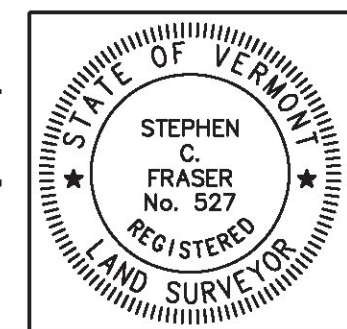
MON. NO.	DESCRIPTION	COORDINATE	STATION
64	MONUMENT TYPE "A" SET 0.5' ABOVE GROUND (SEE DETAILS ON SHEET 2)	N 748831.17 E 1501194.92	205+00.98 24.75' LEFT
65	MONUMENT TYPE "A" SET FLUSH (SEE DETAILS ON SHEET 2)	N 749067.04 E 1501302.56	207+52.79 24.75' LEFT
122	UNMONUMENTED POINT	N 749038.82 E 1501343.23	207+52.79 24.75' RIGHT
123	MONUMENT TYPE "B" SET FLUSH (SEE DETAILS ON SHEET 2)	N 748818.95 E 1501242.89	205+00.98 24.75' RIGHT



I certify that this plat is based on information abstracted from documents, parcel evidence, and physical evidence. The survey work identified hereon is consistent with this information.

I certify that this plat meets the requirements of 27 VSA Section 1403 and complies with Vermont Board of Land Surveyors Rules, Part 5.4 and 5.5, adopted under 26 VSA Section 2544(a)(9).

Signed: *Stephen C. Fraser*
 Stephen C. Fraser, L.S. #527



STATUTORY SURVEY
 STATE OF VERMONT
 VERMONT ROUTE 128
 ESSEX - WESTFORD
 CHITTENDEN COUNTY, VERMONT

SCALE: 1" = 40' | PLAT COMPILATION DATE: 1-19-2015
 R.O.W. WIDTH = 49.5' | PIN #: 12x602 | SHEET 28 OF 39

Vermont Survey and Engineering, Inc.
 79 River Street, Montpelier, Vermont
 (802) 229-9138 ~ info@vermontsurvey.com