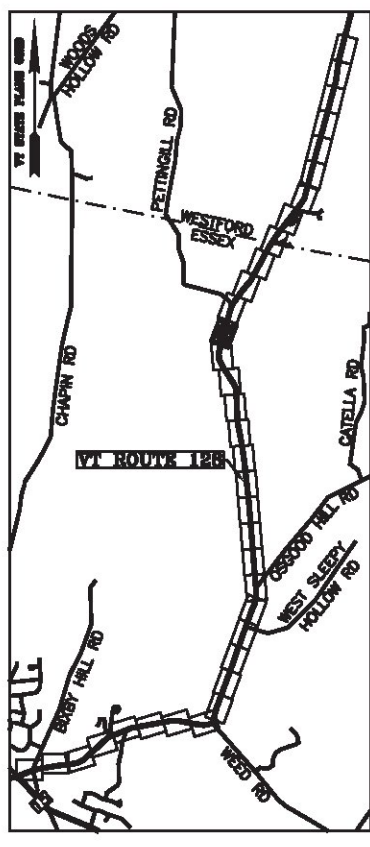


ED 88(2007)
 BASIS OF BEARINGS & COORDINATES
 Datum: Horizontal - NAD 83(2007) SPC (4400 VT) sFT

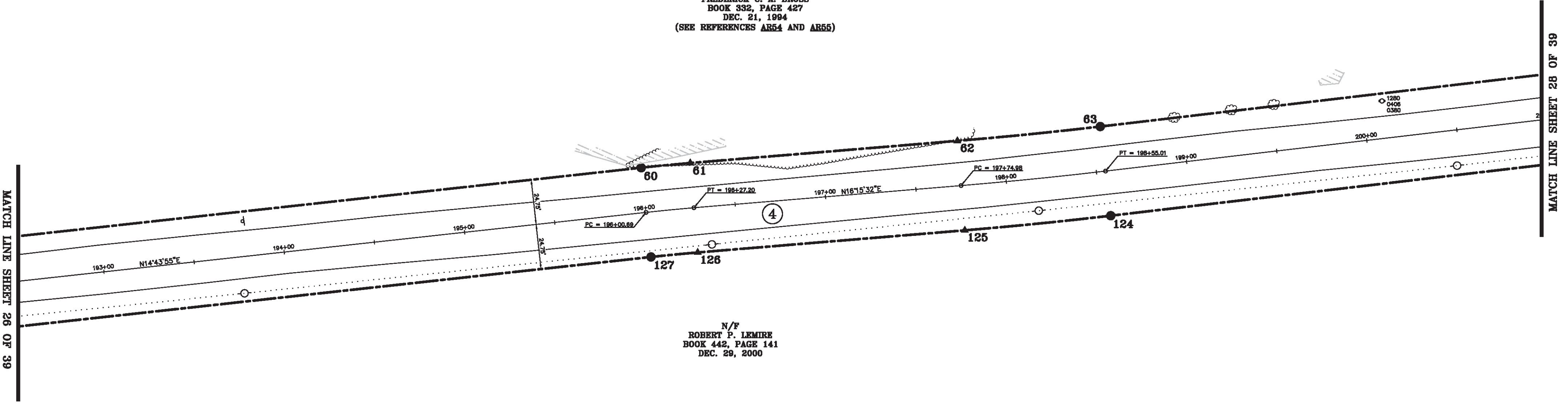


LINE	BEARING	DISTANCE
59-60	N 14° 43' 55" E	538.68'
60-61	SEE CURVE TABLE	
61-62	N 16° 15' 32" E	147.77'
62-63	SEE CURVE TABLE	
63-64	N 14° 17' 51" E	645.98'
123-124	S 14° 17' 51" W	645.98'
124-125	SEE CURVE TABLE	
125-126	S 16° 15' 32" W	147.77'
126-127	SEE CURVE TABLE	
127-128	S 14° 43' 55" W	538.68'

CURVE	CHORD BEARING	CHORD DISTANCE	RADIUS	LENGTH
60-61	N 15° 29' 43" E	27.18'	1019.85'	27.18'
62-63	N 15° 16' 41" E	79.18'	2313.37'	79.19'
124-125	S 15° 16' 41" W	80.88'	2362.87'	80.88'
126-127	S 15° 29' 43" W	25.86'	970.35'	25.86'
196+00.69-196+27.20	N 15° 29' 43" E	26.52'	995.10'	26.52'
197+74.98-198+55.01	N 15° 16' 41" E	80.03'	2338.12'	80.03'

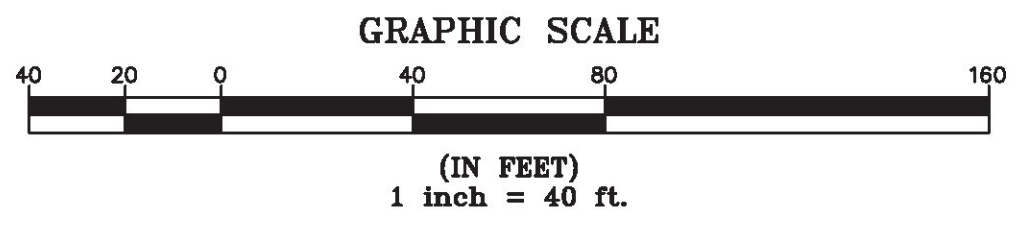
N/F
 FREDERICK C. A. BROSS
 BOOK 332, PAGE 427
 DEC. 21, 1994
 (SEE REFERENCES AR54 AND AR55)

N/F
 ROBERT P. LEMIRE
 BOOK 442, PAGE 141
 DEC. 29, 2000



ORIGINAL DRAWING—INK ON POLYESTER FILM MEETING THE REQUIREMENTS OF 27 VSA 1403(b)(7)

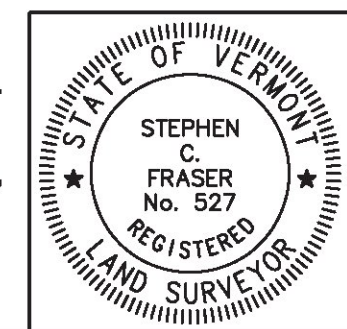
MON. NO.	DESCRIPTION	COORDINATE	STATION
60	MONUMENT TYPE "A" SET 0.5' ABOVE GROUND (SEE DETAILS ON SHEET 2)	N 747960.77 E 1500965.90	196+00.69 24.75' LEFT
61	UNMONUMENTED POINT	N 747986.96 E 1500973.16	196+27.20 24.75' LEFT
62	UNMONUMENTED POINT	N 748128.82 E 1501014.53	197+74.98 24.75' LEFT
63	MONUMENT TYPE "A" SET 0.5' ABOVE GROUND (SEE DETAILS ON SHEET 2)	N 748205.21 E 1501035.40	198+55.01 24.75' LEFT
124	MONUMENT TYPE "A" SET 2.0' BELOW GROUND (SEE DETAILS ON SHEET 2)	N 748192.98 E 1501083.36	198+55.01 24.75' RIGHT
125	UNMONUMENTED POINT	N 748114.96 E 1501062.05	197+74.98 24.75' RIGHT
126	UNMONUMENTED POINT	N 747973.10 E 1501020.68	196+27.20 24.75' RIGHT
127	MONUMENT TYPE "A" SET 0.5' ABOVE GROUND (SEE DETAILS ON SHEET 2)	N 747948.19 E 1501013.77	196+00.69 24.75' RIGHT



I certify that this plat is based on information abstracted from documents, parcel evidence, and physical evidence. The survey work identified hereon is consistent with this information.

I certify that this plat meets the requirements of 27 VSA Section 1403 and complies with Vermont Board of Land Surveyors Rules, Part 5.4 and 5.5, adopted under 26 VSA Section 2544(a)(9).

Signed: *Stephen C. Fraser*
 Stephen C. Fraser, L.S. #527



STATUTORY SURVEY
STATE OF VERMONT
VERMONT ROUTE 128
 ESSEX - WESTFORD
 CHITTENDEN COUNTY, VERMONT

SCALE: 1"= 40'	PLAT COMPILATION DATE: 1-19-2015
R.O.W. WIDTH = 49.5'	PIN #: 12x602 SHEET 27 OF 39

Vermont Survey and Engineering, Inc.
 79 River Street, Montpelier, Vermont
 (802) 229-9138 ~ info@vermontsurvey.com