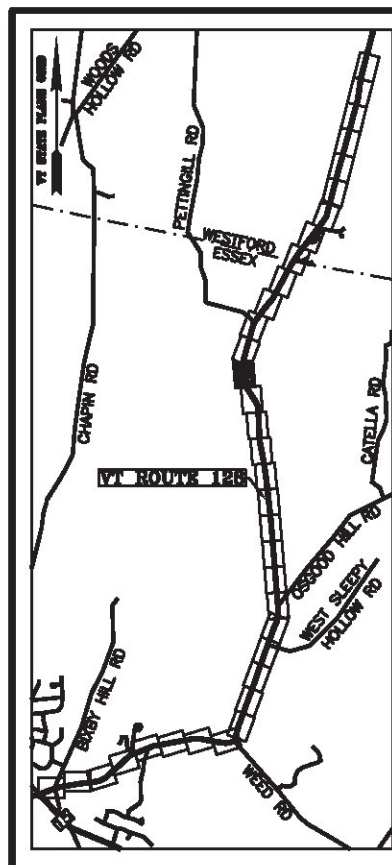
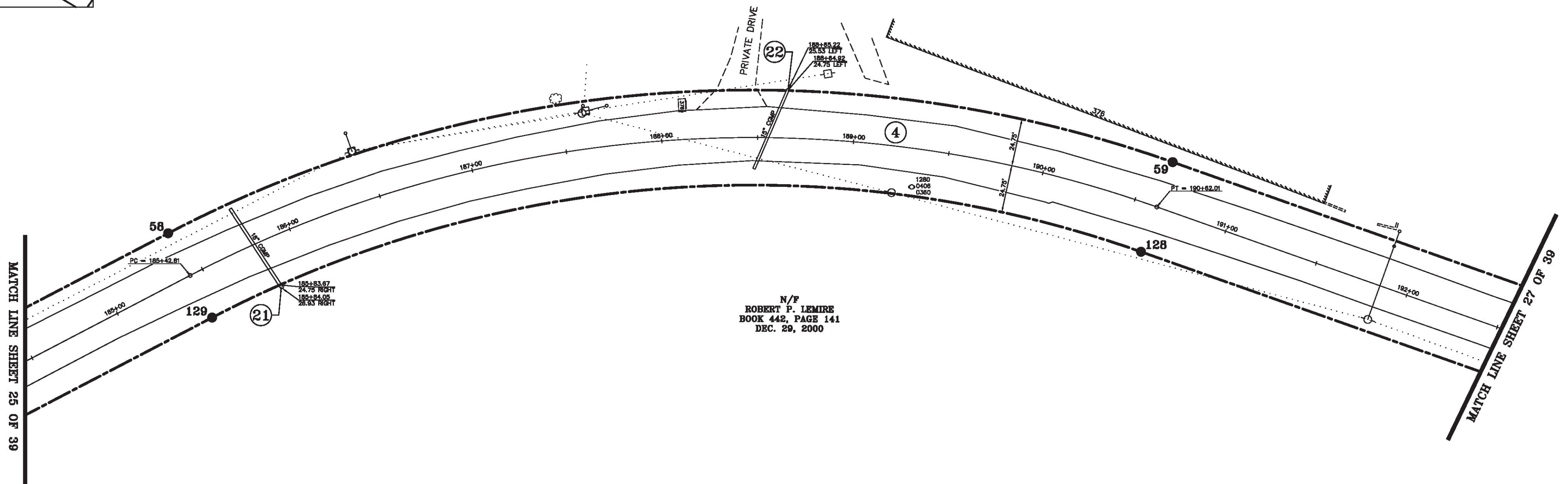


LINE	BEARING	DISTANCE
57-58	N 32° 16' 20" W	357.18'
58-59	SEE CURVE TABLE	
59-60	N 14° 43' 55" E	538.68'
127-128	S 14° 43' 55" W	538.68'
128-129	SEE CURVE TABLE	
129-130	S 32° 16' 20" E	357.18'

CURVE	CHORD BEARING	CHORD DISTANCE	RADIUS	LENGTH
58-59	N 08° 46' 13" W	524.50'	657.63'	539.50'
128-129	S 08° 46' 13" E	485.02'	608.13'	498.89'
185+42.81-190+62.01	N 08° 46' 13" W	504.76'	632.88'	519.20'



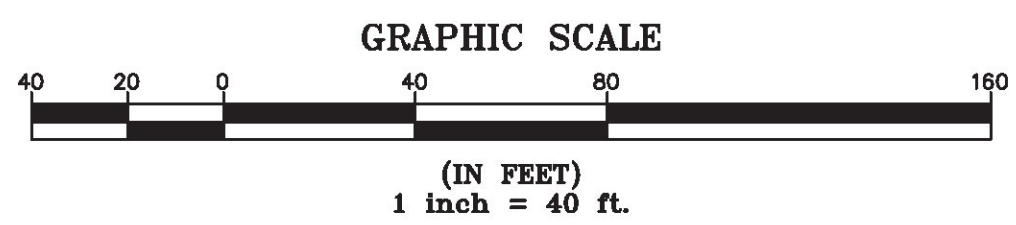
N/F
 FREDERICK C. A. BROSS
 BOOK 332, PAGE 427
 DEC. 21, 1994
 (SEE REFERENCES AR54 AND AR55)



N/F
 ROBERT P. LEMIRE
 BOOK 442, PAGE 141
 DEC. 29, 2000

ORIGINAL DRAWING—INK ON POLYESTER FILM MEETING THE REQUIREMENTS OF 27 VSA 1403(b)(7)

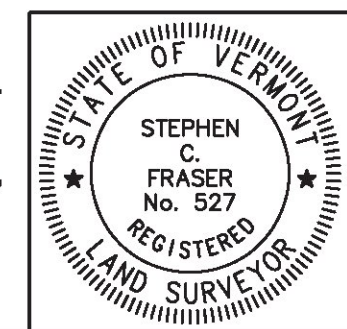
MONUMENT DETAIL TABLE			
MON. NO.	DESCRIPTION	COORDINATE	STATION
58	MONUMENT TYPE "A" SET 2.0' BELOW GROUND (SEE DETAILS ON SHEET 2)	N 746921.43 E 1500908.89	185+42.81 24.75' LEFT
59	MONUMENT TYPE "A" SET FLUSH (SEE DETAILS ON SHEET 2)	N 747439.80 E 1500828.91	190+62.01 24.75' LEFT
128	MONUMENT TYPE "A" SET 2.0' BELOW GROUND (SEE DETAILS ON SHEET 2)	N 747427.21 E 1500876.79	190+62.01 24.75' RIGHT
129	MONUMENT TYPE "A" SET 0.5' ABOVE GROUND (SEE DETAILS ON SHEET 2)	N 746947.86 E 1500950.74	185+42.81 24.75' RIGHT



I certify that this plat is based on information abstracted from documents, parol evidence, and physical evidence. The survey work identified hereon is consistent with this information.

I certify that this plat meets the requirements of 27 VSA Section 1403 and complies with Vermont Board of Land Surveyors Rules, Part 5.4 and 5.5, adopted under 26 VSA Section 2544(a)(9).

Signed: *Stephen C. Fraser*
 Stephen C. Fraser, L.S. #527



STATUTORY SURVEY
 STATE OF VERMONT
 VERMONT ROUTE 128
 ESSEX - WESTFORD
 CHITTENDEN COUNTY, VERMONT

SCALE: 1" = 40'	PLAT COMPILATION DATE: 1-19-2015
R.O.W. WIDTH = 49.5'	PIN #: 12x602 SHEET 26 OF 39

Vermont Survey and Engineering, Inc.
 79 River Street, Montpelier, Vermont
 (802) 229-9138 ~ info@vermontsurvey.com