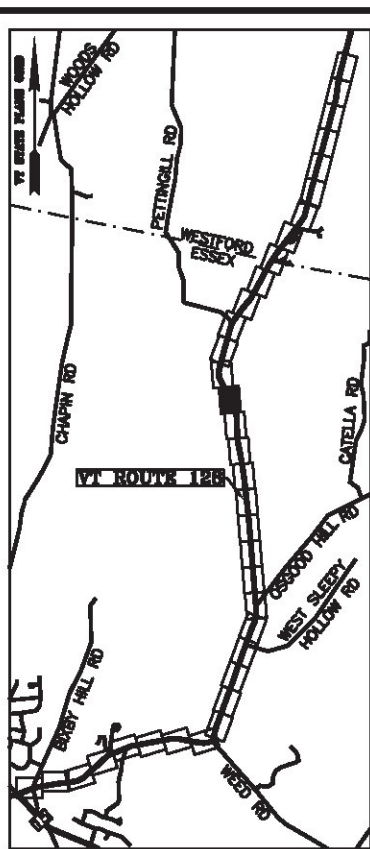


MONUMENT DETAIL TABLE			
MON. NO.	DESCRIPTION	COORDINATE	STATION
56	MONUMENT TYPE "A" SET FLUSH (SEE DETAILS ON SHEET 2)	N 746317.42 E 1501290.32	178+28.44 24.75' LEFT
57	MONUMENT TYPE "A" SET 2.0' BELOW GROUND (SEE DETAILS ON SHEET 2)	N 746619.43 E 1501099.60	181+85.62 24.75' LEFT
130	MONUMENT TYPE "B" SET FLUSH (SEE DETAILS ON SHEET 2)	N 746645.86 E 1501141.45	181+85.62 24.75' RIGHT
131	MONUMENT TYPE "B" SET FLUSH (SEE DETAILS ON SHEET 2)	N 746343.85 E 1501332.17	178+28.44 24.75' RIGHT
261	5/8" DIA. IRON ROD FOUND 0.5' ABOVE GROUND WITH ALUMINUM CAP MARKED "TRUDELL CONSULTING ENGINEERS LS 488" - STABLE	N 746299.44 E 1501359.22	177+78.14 25.66' RIGHT

RIGHT OF WAY LIMIT LINE TABLE		
LINE	BEARING	DISTANCE
55-56	SEE CURVE TABLE	
56-57	N 32° 16' 20" W	357.18'
57-58	N 32° 16' 20" W	357.18'
129-130	S 32° 16' 20" E	357.18'
130-131	S 32° 16' 20" E	357.18'
131-132	SEE CURVE TABLE	

CURVE TABLE				
CURVE	CHORD BEARING	CHORD DISTANCE	RADIUS	LENGTH
94-95	N 17° 33' 44" W	365.13'	718.97'	369.17'
131-132	S 17° 33' 44" E	390.27'	768.47'	394.59'
174+46.56-178+28.44	N 17° 33' 44" W	377.70'	743.72'	381.88'



N/F
 FREDERICK C. A. BROSS
 BOOK 332, PAGE 427
 DEC. 21, 1994
 (SEE REFERENCES AR54 AND AR55)

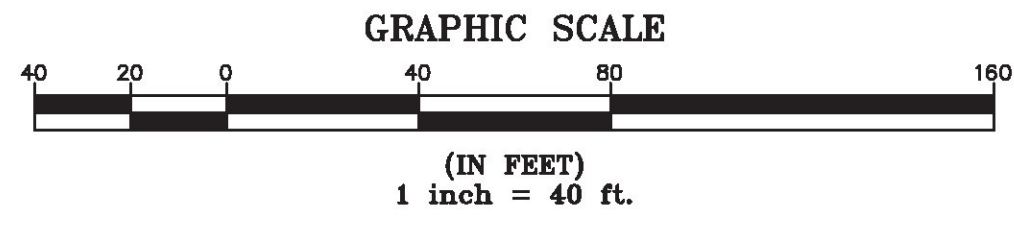
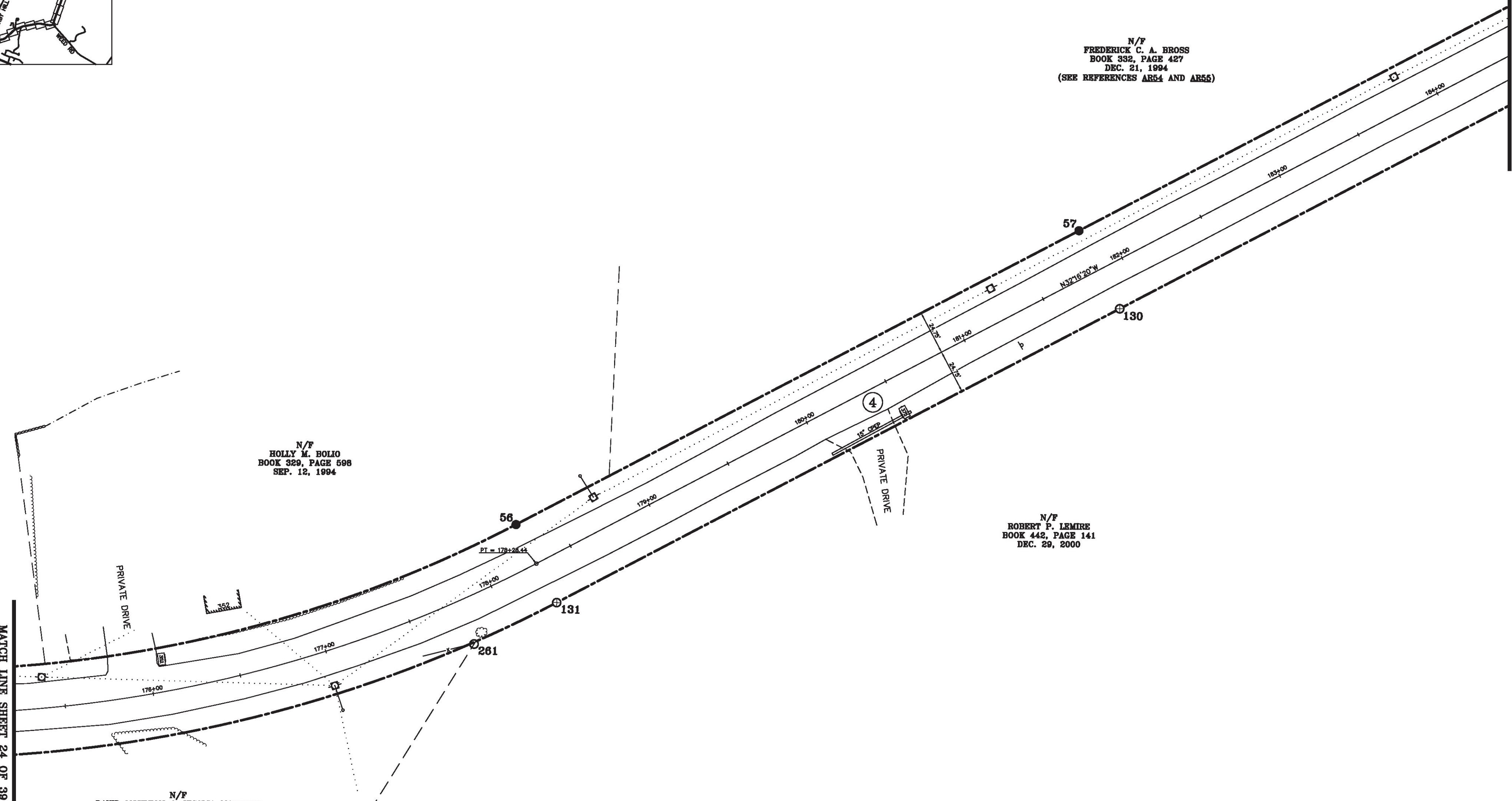
N/F
 HOLLY M. HOLIO
 BOOK 329, PAGE 598
 SEP. 12, 1994

N/F
 ROBERT P. LEMIRE
 BOOK 442, PAGE 141
 DEC. 29, 2000

N/F
 DAVID MOULTON & JESSICA MOULTON
 BOOK 780, PAGE 533
 MAY 28, 2009
 (SEE REFERENCES AR50, AR51, AND AR53)

MATCH LINE SHEET 24 OF 39

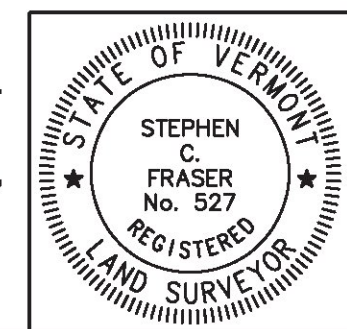
MATCH LINE SHEET 26 OF 39



I certify that this plat is based on information abstracted from documents, parol evidence, and physical evidence. The survey work identified hereon is consistent with this information.

I certify that this plat meets the requirements of 27 VSA Section 1403 and complies with Vermont Board of Land Surveyors Rules, Part 5.4 and 5.5, adopted under 26 VSA Section 2544(a)(9).

Signed: *Stephen C. Fraser*
 Stephen C. Fraser, L.S. #527



STATUTORY SURVEY
 STATE OF VERMONT
 VERMONT ROUTE 128
 ESSEX - WESTFORD
 CHITTENDEN COUNTY, VERMONT

SCALE: 1" = 40'	PLAT COMPILATION DATE: 1-19-2015
R.O.W. WIDTH = 49.5'	PIN #: 12x602 SHEET 25 OF 39

Vermont Survey and Engineering, Inc.
 79 River Street, Montpelier, Vermont
 (802) 229-9138 ~ info@vermontsurvey.com

ORIGINAL DRAWING-INK ON POLYESTER FILM MEETING THE REQUIREMENTS OF 27 VSA 1403(b)(7)