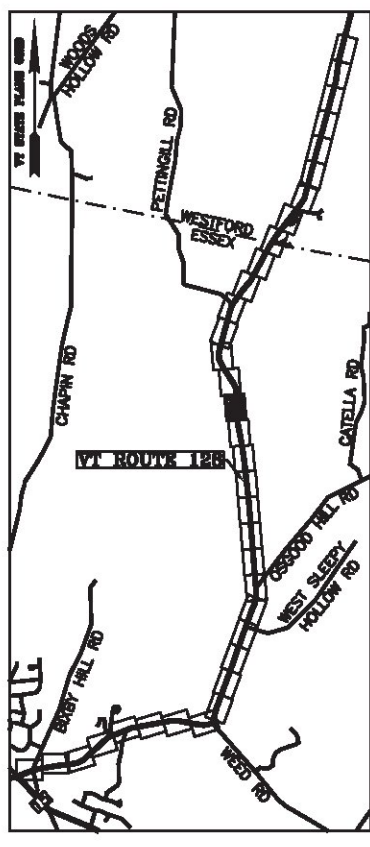


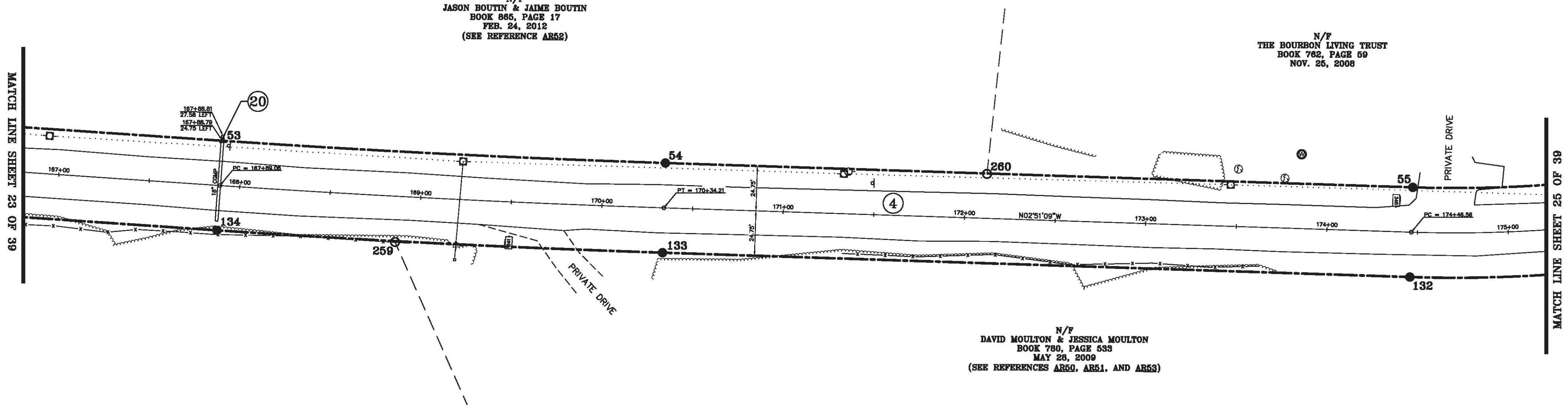
LINE	BEARING	DISTANCE
52-53	N 00° 50' 03" W	238.93'
53-54	SEE CURVE TABLE	
54-55	N 02° 51' 09" W	412.35'
55-56	SEE CURVE TABLE	
131-132	SEE CURVE TABLE	
132-133	S 02° 51' 09" E	412.35'
133-134	SEE CURVE TABLE	
134-135	S 00° 50' 03" E	238.92'

CURVE	CHORD BEARING	CHORD DISTANCE	RADIUS	LENGTH
53-54	N 01° 50' 36" W	244.27'	6935.03'	244.28'
55-56	N 17° 33' 44" W	365.13'	718.97'	369.17'
131-132	S 17° 33' 44" E	390.27'	768.47'	394.59'
133-134	S 01° 50' 36" E	246.01'	6984.53'	246.03'
167+89.06-170+34.21	N 01° 50' 36" W	245.14'	6959.78'	245.15'
174+46.56-178+28.44	N 17° 33' 44" W	377.70'	743.72'	381.88'



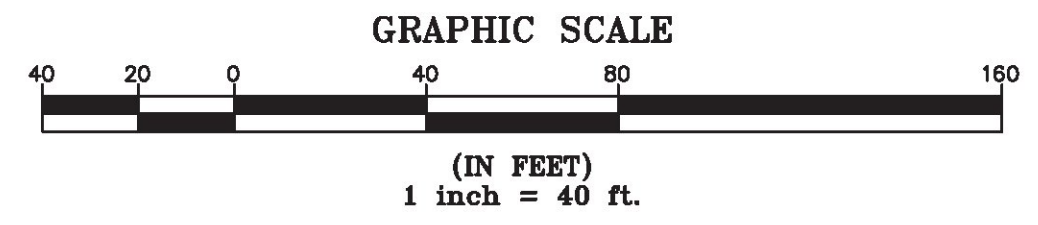
N/F
JASON BOUTIN & JAIME BOUTIN
BOOK 865, PAGE 17
FEB. 24, 2012
(SEE REFERENCE AR52)

N/F
THE BOURBON LIVING TRUST
BOOK 762, PAGE 69
NOV. 25, 2008



N/F
DAVID MOULTON & JESSICA MOULTON
BOOK 780, PAGE 533
MAY 28, 2009
(SEE REFERENCES AR50, AR51, AND AR53)

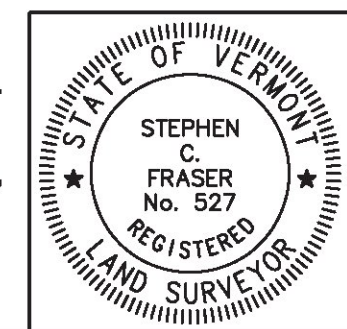
MON. NO.	DESCRIPTION	COORDINATE	STATION
53	UNMONUMENTED POINT	N 745313.33 E 1501428.87	167+89.06 24.75' LEFT
54	MONUMENT TYPE "A" SET 2.0' BELOW GROUND (SEE DETAILS ON SHEET 2)	N 745557.47 E 1501421.01	170+34.21 24.75' LEFT
55	MONUMENT TYPE "A" SET FLUSH (SEE DETAILS ON SHEET 2)	N 745969.31 E 1501400.49	174+46.56 24.75' LEFT
132	MONUMENT TYPE "A" SET FLUSH (SEE DETAILS ON SHEET 2)	N 745971.77 E 1501449.93	174+46.56 24.75' RIGHT
133	MONUMENT TYPE "A" SET 1.0' ABOVE GROUND (SEE DETAILS ON SHEET 2)	N 745559.94 E 1501470.45	170+34.21 24.75' RIGHT
134	MONUMENT TYPE "A" SET 0.5' ABOVE GROUND (SEE DETAILS ON SHEET 2)	N 745314.05 E 1501478.36	167+89.06 24.75' RIGHT
259	5/8" DIA. IRON ROD FOUND 0.5' ABOVE GROUND WITH ALUMINUM CAP MARKED "TRUDELL CONSULTING ENGINEERS LS 488" - STABLE	N 745412.45 E 1501476.69	168+87.12 25.21' RIGHT
260	5/8" DIA. IRON ROD FOUND 0.5' ABOVE GROUND WITH ALUMINUM CAP MARKED "TRUDELL CONSULTING ENGINEERS LS 488" - STABLE	N 745734.69 E 1501412.40	172+11.64 24.53' LEFT



I certify that this plat is based on information abstracted from documents, parol evidence, and physical evidence. The survey work identified hereon is consistent with this information.

I certify that this plat meets the requirements of 27 VSA Section 1403 and complies with Vermont Board of Land Surveyors Rules, Part 5.4 and 5.5, adopted under 26 VSA Section 2544(a)(9).

Signed: *Stephen C. Fraser*
Stephen C. Fraser, L.S. #527



STATUTORY SURVEY
STATE OF VERMONT
VERMONT ROUTE 128
ESSEX - WESTFORD
CHITTENDEN COUNTY, VERMONT

SCALE: 1" = 40' | PLAT COMPILATION DATE: 1-19-2015
R.O.W. WIDTH = 49.5' | PIN #: 12x602 | SHEET 24 OF 36

Vermont Survey and Engineering, Inc.
79 River Street, Montpelier, Vermont
(802) 229-9138 ~ info@vermontsurvey.com

ORIGINAL DRAWING-INK ON POLYESTER FILM MEETING THE REQUIREMENTS OF 27 VSA 1403(b)(7)