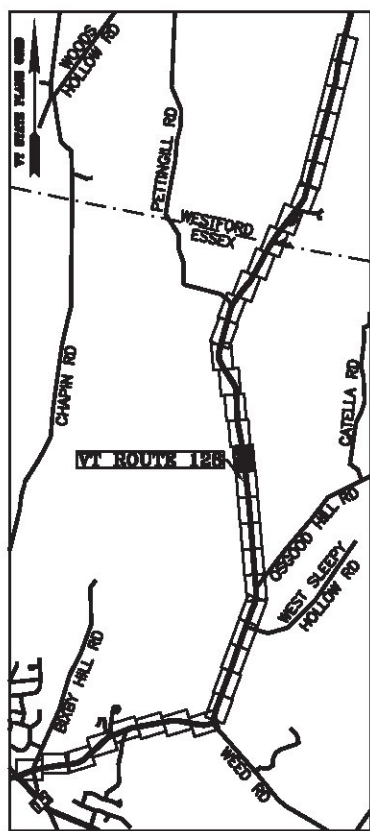
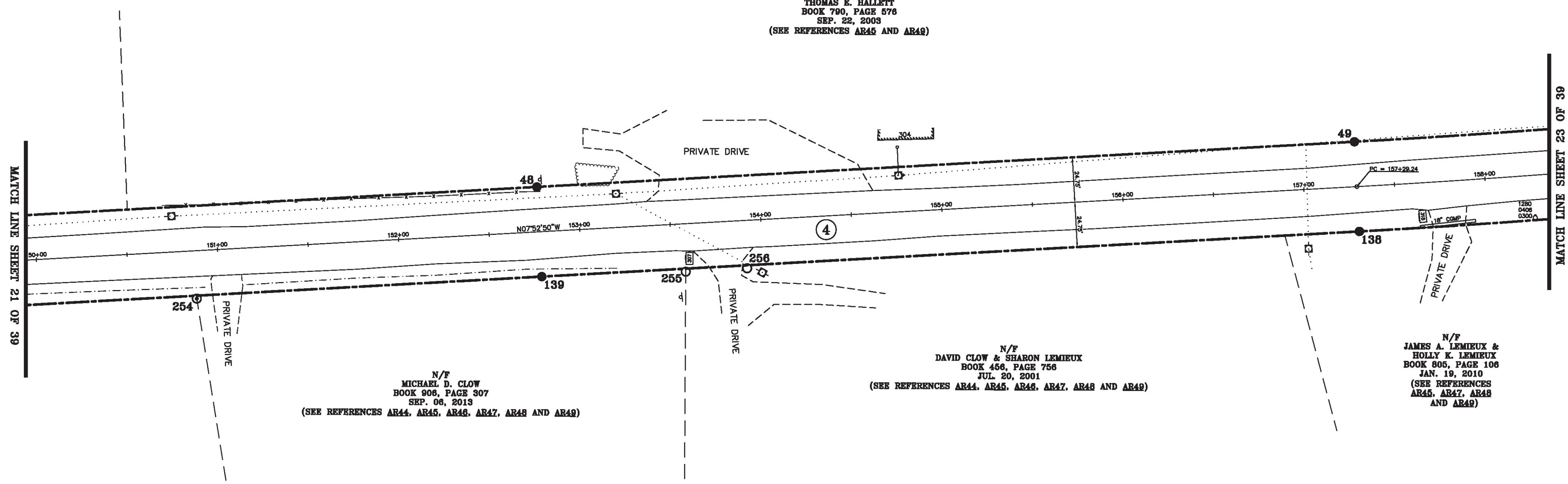


LINE	BEARING	DISTANCE
47-48	N 07° 52' 50" W	451.52'
48-49	N 07° 52' 50" W	451.51'
49-50	SEE CURVE TABLE	
137-138	SEE CURVE TABLE	
138-139	S 07° 52' 50" E	451.51'
139-140	S 07° 52' 50" E	451.52'

CURVE	CHORD BEARING	CHORD DISTANCE	RADIUS	LENGTH
49-50	N 10° 17' 50" W	450.15'	5337.55'	450.28'
137-138	S 10° 17' 50" E	454.32'	5387.05'	454.46'
157+29.24-161+81.62	N 10° 17' 50" W	452.24'	5362.30'	452.37'



N/F
THOMAS E. HALLETT
BOOK 790, PAGE 576
SEP. 22, 2003
(SEE REFERENCES AR45 AND AR48)



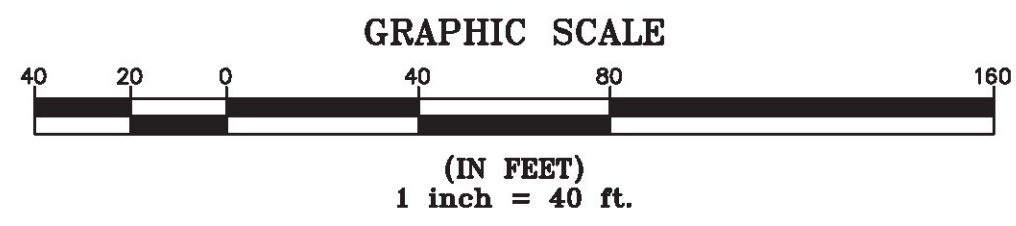
N/F
MICHAEL D. CLOW
BOOK 908, PAGE 307
SEP. 06, 2013
(SEE REFERENCES AR44, AR45, AR46, AR47, AR48 AND AR49)

N/F
DAVID CLOW & SHARON LEMIEUX
BOOK 458, PAGE 756
JUL. 20, 2001
(SEE REFERENCES AR44, AR45, AR46, AR47, AR48 AND AR49)

N/F
JAMES A. LEMIEUX &
HOLLY K. LEMIEUX
BOOK 805, PAGE 106
JAN. 19, 2010
(SEE REFERENCES AR45, AR47, AR48 AND AR49)

ORIGINAL DRAWING-INK ON POLYESTER FILM MEETING THE REQUIREMENTS OF 27 VSA 1403(b)(7)

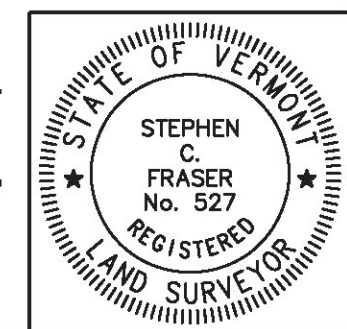
MON. NO.	DESCRIPTION	COORDINATE	STATION
48	MONUMENT TYPE "A" SET FLUSH (SEE DETAILS ON SHEET 2)	N 743816.68 E 1501636.75	152+77.73 24.75' LEFT
49	MONUMENT TYPE "A" SET FLUSH (SEE DETAILS ON SHEET 2)	N 744263.93 E 1501574.84	157+29.24 24.75' LEFT
138	MONUMENT TYPE "A" SET FLUSH (SEE DETAILS ON SHEET 2)	N 744270.72 E 1501623.87	157+29.24 24.75' RIGHT
139	MONUMENT TYPE "A" SET FLUSH (SEE DETAILS ON SHEET 2)	N 743823.47 E 1501685.78	152+77.73 24.75' RIGHT
254	1 1/2" O.D. IRON PIPE FOUND 0.5' ABOVE GROUND BENT & STABLE	N 743634.85 E 1501713.53	150+87.09 26.38' RIGHT
255	5/8" DIA. IRON ROD FOUND FLUSH WITH CAP MARKED "VT LS 48 NH LS 248" STABLE	N 743902.35 E 1501676.54	153+57.14 26.42' RIGHT
256	RAILROAD SPIKE FOUND 0.1' BELOW GROUND - STABLE	N 743935.96 E 1501671.89	153+91.06 26.42' RIGHT



I certify that this plat is based on information abstracted from documents, parol evidence, and physical evidence. The survey work identified hereon is consistent with this information.

I certify that this plat meets the requirements of 27 VSA Section 1403 and complies with Vermont Board of Land Surveyors Rules, Part 5.4 and 5.5, adopted under 26 VSA Section 2544(a)(9).

Signed: *Stephen C. Fraser*
Stephen C. Fraser, L.S. #527



STATUTORY SURVEY
STATE OF VERMONT
VERMONT ROUTE 128
ESSEX - WESTFORD
CHITTENDEN COUNTY, VERMONT

SCALE: 1" = 40'	PLAT COMPILATION DATE: 1-19-2015
R.O.W. WIDTH = 49.5'	PIN #: 12x602
SHEET 22 OF 39	

Vermont Survey and Engineering, Inc.
79 River Street, Montpelier, Vermont
(802) 229-9138 ~ info@vermontsurvey.com