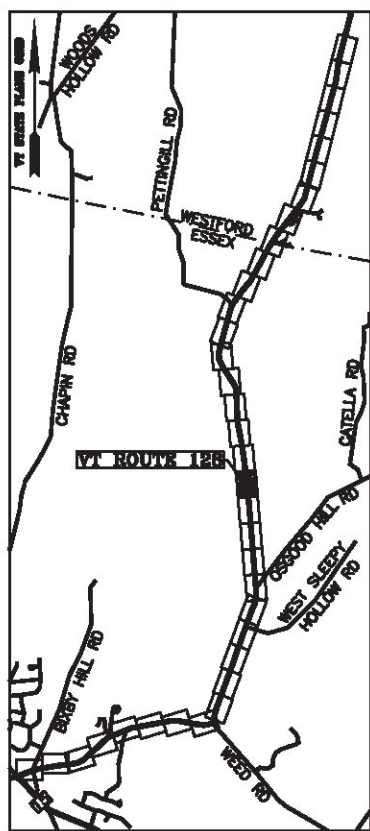
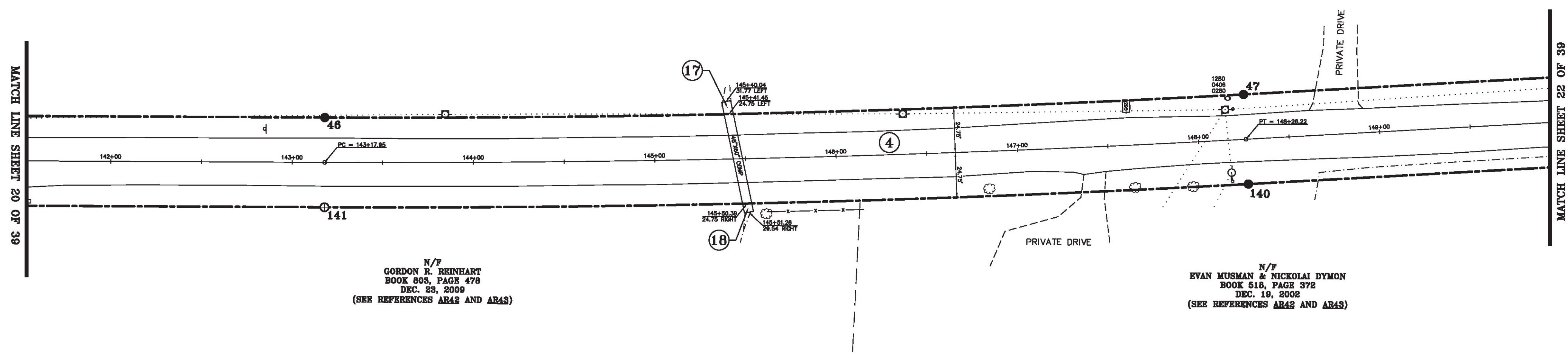


LINE	BEARING	DISTANCE
45-46	N 04° 26' 07" W	435.26'
46-47	SEE CURVE TABLE	
47-48	N 07° 52' 50" W	451.52'
139-140	S 07° 52' 50" E	451.52'
140-141	SEE CURVE TABLE	
141-142	S 04° 26' 07" E	435.26'

CURVE	CHORD BEARING	CHORD DISTANCE	RADIUS	LENGTH
46-47	N 06° 09' 28" W	506.70'	8427.99'	506.79'
140-141	S 06° 09' 28" E	509.68'	8477.49'	509.76'
143+17.95-148+26.22	N 06° 09' 28" W	508.19'	8452.74'	508.27'



N/F  
JASON BOISSONEAULT  
BOOK 660, PAGE 26 - AUG. 03, 2005  
JEFFREY P. BOISSONEAULT  
BOOK 371, PAGE 548 - SEP. 11, 1997  
BOOK 332, PAGE 232 - DEC. 09, 1994  
BOOK 312, PAGE 535 - OCT. 08, 1993

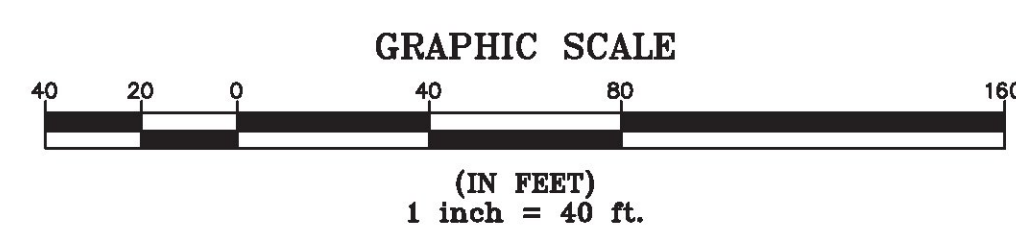


N/F  
GORDON R. REINHART  
BOOK 803, PAGE 476  
DEC. 23, 2009  
(SEE REFERENCES AR42 AND AR43)

N/F  
EVAN MUSMAN & NICKOLAI DYMON  
BOOK 518, PAGE 372  
DEC. 19, 2002  
(SEE REFERENCES AR42 AND AR43)

ORIGINAL DRAWING-INK ON POLYESTER FILM MEETING THE REQUIREMENTS OF 27 VSA 1403(b)(7)

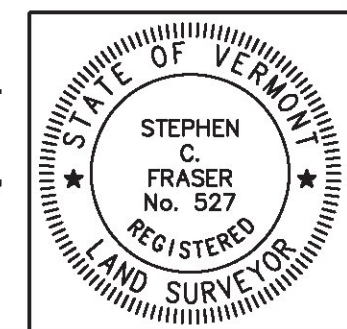
MON. NO.	DESCRIPTION	COORDINATE	STATION
46	MONUMENT TYPE "A" SET FLUSH (SEE DETAILS ON SHEET 2)	N 742865.65 E 1501753.00	143+17.95 24.75' LEFT
47	MONUMENT TYPE "A" SET 0.5' ABOVE GROUND (SEE DETAILS ON SHEET 2)	N 743369.43 E 1501698.65	148+26.22 24.75' LEFT
140	MONUMENT TYPE "A" SET FLUSH (SEE DETAILS ON SHEET 2)	N 743376.22 E 1501747.88	148+26.22 24.75' RIGHT
141	MONUMENT TYPE "B" SET FLUSH (SEE DETAILS ON SHEET 2)	N 742869.48 E 1501802.36	143+17.95 24.75' RIGHT



I certify that this plat is based on information abstracted from documents, parol evidence, and physical evidence. The survey work identified hereon is consistent with this information.

I certify that this plat meets the requirements of 27 VSA Section 1403 and complies with Vermont Board of Land Surveyors Rules, Part 5.4 and 5.5, adopted under 26 VSA Section 2544(a)(9).

Signed: *Stephen C. Fraser*  
Stephen C. Fraser, L.S. #527



STATUTORY SURVEY  
STATE OF VERMONT  
VERMONT ROUTE 128  
ESSEX - WESTFORD  
CHITTENDEN COUNTY, VERMONT

SCALE: 1" = 40'	PLAT COMPILATION DATE: 1-19-2015
R.O.W. WIDTH = 49.5'	PIN #: 12x602 SHEET 21 OF 39

Vermont Survey and Engineering, Inc.  
79 River Street, Montpelier, Vermont  
(802) 229-9138 ~ info@vermontsurvey.com