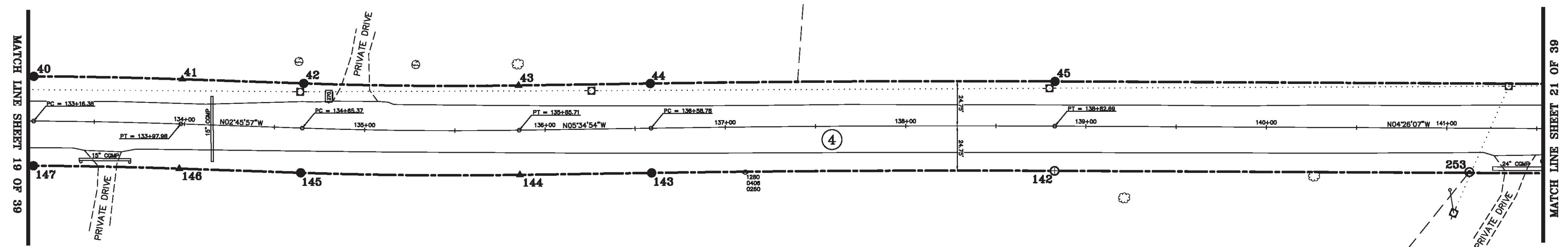


LINE	BEARING	DISTANCE
39-40	N 04° 26' 07" W	1286.41'
40-41	SEE CURVE TABLE	
41-42	N 02° 45' 57" W	67.39'
42-43	SEE CURVE TABLE	
43-44	N 05° 34' 54" W	73.07'
44-45	SEE CURVE TABLE	
45-46	N 04° 26' 07" W	435.26'
141-142	S 04° 26' 07" E	435.26'
142-143	SEE CURVE TABLE	
143-144	S 05° 34' 54" E	73.07'
144-145	SEE CURVE TABLE	
145-146	S 02° 45' 57" E	67.39'
146-147	SEE CURVE TABLE	
147-148	S 04° 26' 07" E	644.41'

CURVE	CHORD BEARING	CHORD DISTANCE	RADIUS	LENGTH
40-41	N 03° 36' 02" W	82.31'	2824.88'	82.32'
42-43	N 04° 10' 25" W	119.11'	2423.77'	119.12'
44-45	N 05° 00' 30" W	224.40'	11216.51'	224.41'
142-143	S 05° 00' 30" E	223.41'	11167.01'	223.42'
144-145	S 04° 10' 25" E	121.54'	2473.27'	121.55'
146-147	S 03° 36' 02" E	80.87'	2775.38'	80.87'
133+16.38-133+97.98	N 03° 36' 02" W	81.59'	2800.13'	81.59'
134+65.37-135+85.71	N 04° 10' 25" W	120.32'	2448.52'	120.34'
136+58.78-138+82.69	N 05° 00' 30" W	223.91'	11191.76'	223.91'

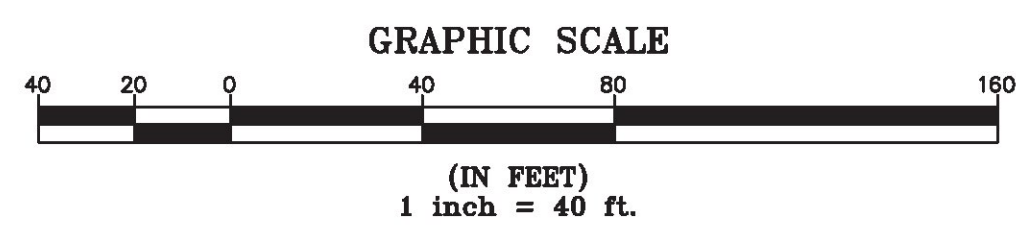
N/F
JULIE GILES
BOOK 639, PAGE 357
JAN. 26, 2005
(SEE REFERENCES AR40 AND AR41)

N/F
JASON BOISSONEAULT
BOOK 660, PAGE 26 - AUG. 03, 2005
JEFFREY P. BOISSONEAULT
BOOK 371, PAGE 548 - SEP. 11, 1997
BOOK 332, PAGE 232 - DEC. 09, 1994
BOOK 312, PAGE 535 - OCT. 08, 1993



N/F
GORDON REINHART
BOOK 126, PAGE 95
JUL. 14, 1976

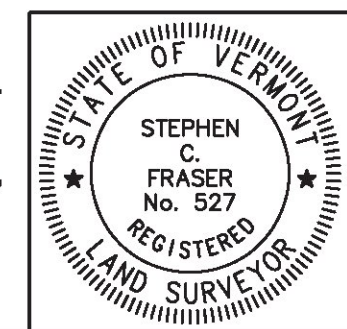
MON. NO.	DESCRIPTION	COORDINATE	STATION
40	MONUMENT TYPE "A" SET FLUSH (SEE DETAILS ON SHEET 2)	N 741867.17 E 1501830.45	133+16.38 24.75' LEFT
41	UNMONUMENTED POINT	N 741949.32 E 1501825.28	133+97.98 24.75' LEFT
42	MONUMENT TYPE "A" SET FLUSH (SEE DETAILS ON SHEET 2)	N 742016.63 E 1501822.03	134+65.37 24.75' LEFT
43	UNMONUMENTED POINT	N 742135.43 E 1501813.36	135+85.71 24.75' LEFT
44	MONUMENT TYPE "A" SET FLUSH (SEE DETAILS ON SHEET 2)	N 742208.15 E 1501806.25	136+58.78 24.75' LEFT
45	MONUMENT TYPE "A" SET FLUSH (SEE DETAILS ON SHEET 2)	N 742431.70 E 1501786.66	138+82.69 24.75' LEFT
142	MONUMENT TYPE "B" SET FLUSH (SEE DETAILS ON SHEET 2)	N 742435.53 E 1501836.02	138+82.69 24.75' RIGHT
143	MONUMENT TYPE "A" SET FLUSH (SEE DETAILS ON SHEET 2)	N 742212.97 E 1501855.52	136+58.78 24.75' RIGHT
144	UNMONUMENTED POINT	N 742140.24 E 1501862.63	135+85.71 24.75' RIGHT
145	MONUMENT TYPE "A" SET FLUSH (SEE DETAILS ON SHEET 2)	N 742019.02 E 1501871.47	134+65.37 24.75' RIGHT
146	UNMONUMENTED POINT	N 741951.71 E 1501874.72	133+97.98 24.75' RIGHT
147	MONUMENT TYPE "A" SET FLUSH (SEE DETAILS ON SHEET 2)	N 741871.00 E 1501879.80	133+16.38 24.75' RIGHT
253	1" I.D. IRON PIPE FOUND 1.0' ABOVE GROUND - UNSTABLE	N 742664.79 E 1501817.77	141+12.68 24.29' RIGHT



I certify that this plat is based on information abstracted from documents, parol evidence, and physical evidence. The survey work identified hereon is consistent with this information.

I certify that this plat meets the requirements of 27 VSA Section 1403 and complies with Vermont Board of Land Surveyors Rules, Part 5.4 and 5.5, adopted under 26 VSA Section 2544(a)(9).

Signed: *Stephen C. Fraser*
Stephen C. Fraser, L.S. #527



STATUTORY SURVEY
STATE OF VERMONT
VERMONT ROUTE 128
ESSEX - WESTFORD
CHITTENDEN COUNTY, VERMONT

SCALE: 1" = 40' | PLAT COMPILATION DATE: 1-19-2015
R.O.W. WIDTH = 49.5' | PIN #: 12x602 | SHEET 20 OF 39

Vermont Survey and Engineering, Inc.
79 River Street, Montpelier, Vermont
(802) 229-9138 ~ info@vermontsurvey.com

ORIGINAL DRAWING-INK ON POLYESTER FILM MEETING THE REQUIREMENTS OF 27 VSA 1403(b)(7)