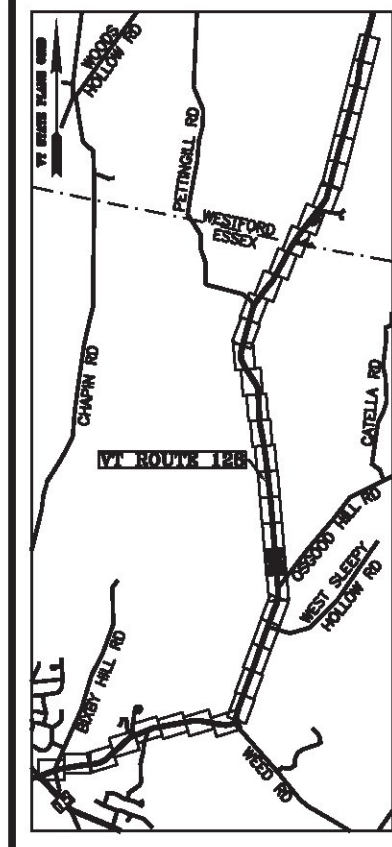
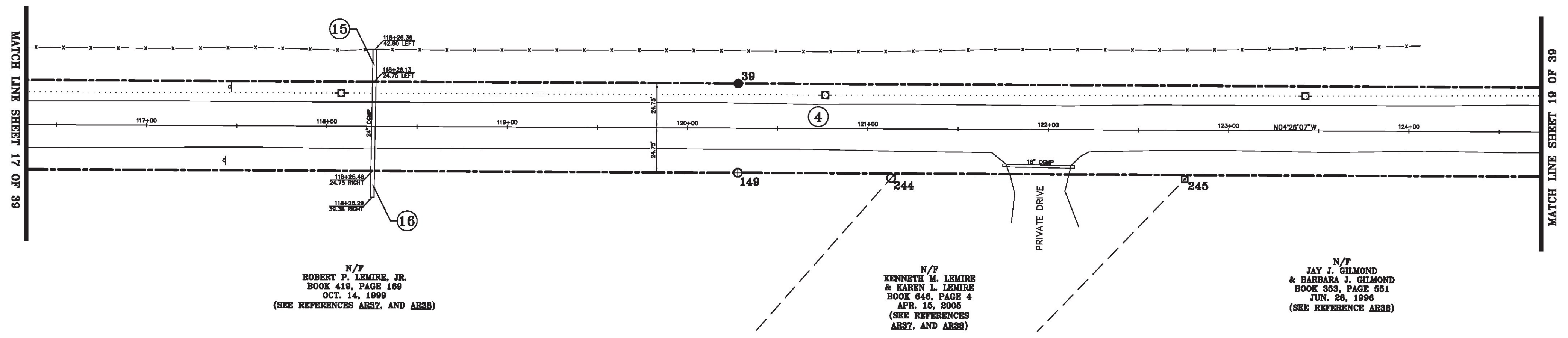


LINE	BEARING	DISTANCE
38-39	N 04° 26' 07" W	643.87'
39-40	N 04° 26' 07" W	1288.41'
148-149	S 04° 26' 07" E	644.00'
149-150	S 04° 26' 07" E	643.87'



N/F
 JOHN PAUL LEMIRE & SANDRA T. LEMIRE
 BOOK 157, PAGE 193
 OCT. 09, 1980



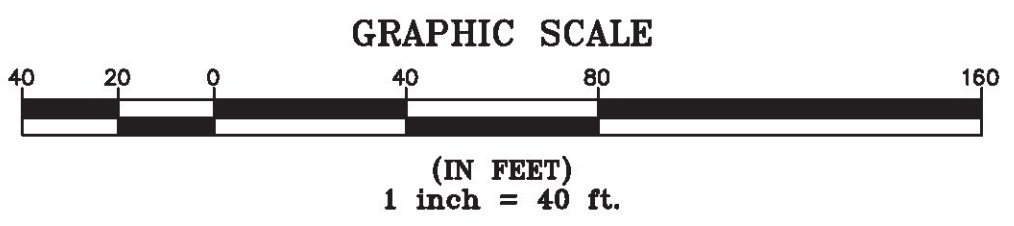
N/F
 ROBERT P. LEMIRE, JR.
 BOOK 419, PAGE 169
 OCT. 14, 1999
 (SEE REFERENCES AR37, AND AR38)

N/F
 KENNETH M. LEMIRE
 & KAREN L. LEMIRE
 BOOK 646, PAGE 4
 APR. 15, 2005
 (SEE REFERENCES
 AR37, AND AR38)

N/F
 JAY J. GILMOND
 & BARBARA J. GILMOND
 BOOK 353, PAGE 551
 JUN. 26, 1996
 (SEE REFERENCE AR38)

ORIGINAL DRAWING-INK ON POLYESTER FILM MEETING THE REQUIREMENTS OF 27 VSA 1403(b)(7)

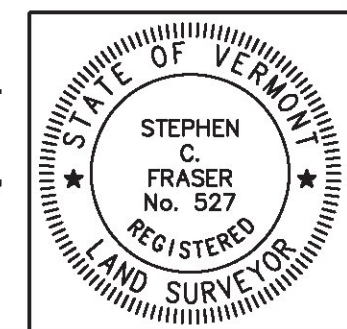
MON. NO.	DESCRIPTION	COORDINATE	STATION
39	MONUMENT TYPE "A" SET FLUSH (SEE DETAILS ON SHEET 2)	N 740582.61 E 1501930.09	120+27.97 24.75' LEFT
149	MONUMENT TYPE "B" SET FLUSH (SEE DETAILS ON SHEET 2)	N 740586.44 E 1501979.44	120+27.97 24.75' RIGHT
244	5/8" DIA. IRON ROD FOUND FLUSH WITH ALUMINUM CAP MARKED "TRUDELL CONSULTING & ENG. LS 488" - STABLE	N 740671.44 E 1501975.33	121+13.03 27.23' RIGHT
245	4"x4" CONCRETE MONUMENT FOUND FLUSH WITH TOP DAMAGED STABLE	N 740833.69 E 1501962.69	122+75.78 27.17' RIGHT



I certify that this plat is based on information abstracted from documents, parcel evidence, and physical evidence. The survey work identified hereon is consistent with this information.

I certify that this plat meets the requirements of 27 VSA Section 1403 and complies with Vermont Board of Land Surveyors Rules, Part 5.4 and 5.5, adopted under 26 VSA Section 2544(a)(9).

Signed: *Stephen C. Fraser*
 Stephen C. Fraser, L.S. #527



STATUTORY SURVEY
 STATE OF VERMONT
 VERMONT ROUTE 128
 ESSEX - WESTFORD
 CHITTENDEN COUNTY, VERMONT

SCALE: 1" = 40'	PLAT COMPILATION DATE: 1-19-2015
R.O.W. WIDTH = 49.5'	PIN #: 12x602 SHEET 18 OF 39

Vermont Survey and Engineering, Inc.
 79 River Street, Montpelier, Vermont
 (802) 229-9138 ~ info@vermontsurvey.com