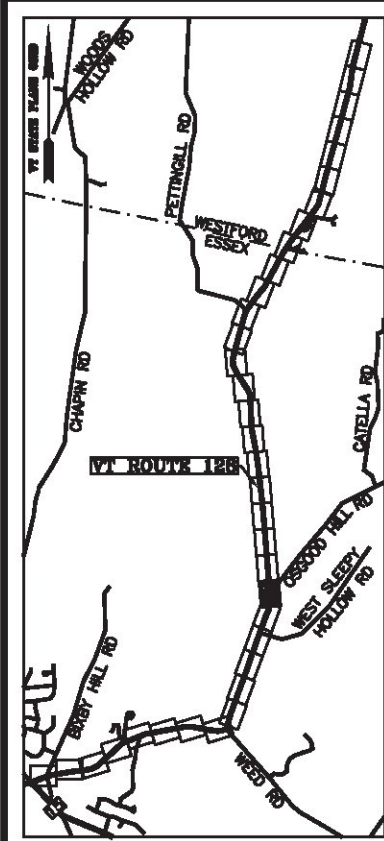
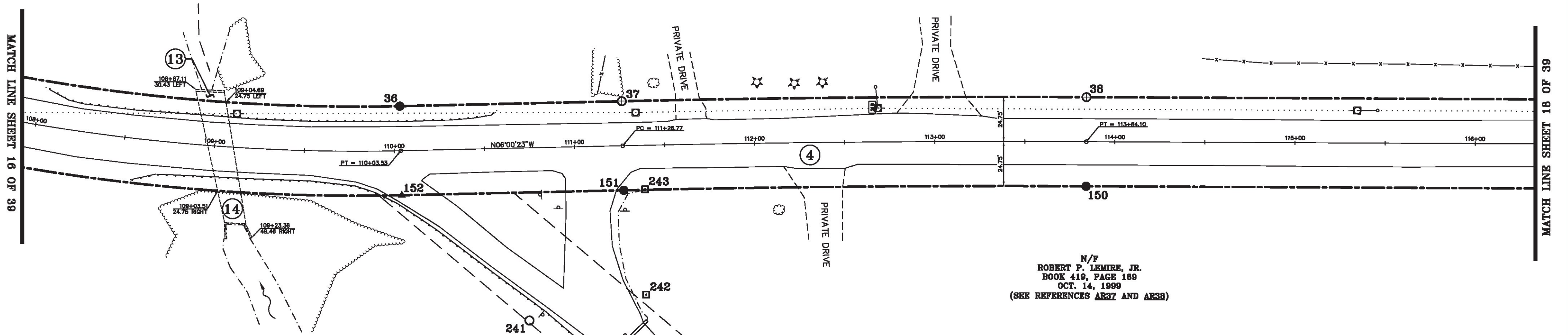


LINE	BEARING	DISTANCE
35-36	SEE CURVE TABLE	
36-37	N 06° 00' 23" W	123.25'
37-38	SEE CURVE TABLE	
38-39	N 04° 26' 07" W	643.87'
149-150	S 04° 26' 07" E	643.87'
150-151	SEE CURVE TABLE	
151-152	S 06° 00' 23" E	123.25'
152-153	SEE CURVE TABLE	

CURVE	CHORD BEARING	CHORD DISTANCE	RADIUS	LENGTH
35-36	N 07° 07' 59" E	478.09'	1051.58'	482.31'
37-38	N 05° 13' 15" W	257.99'	9408.92'	258.00'
150-151	S 05° 13' 15" E	256.64'	9359.42'	256.65'
152-153	S 07° 07' 59" W	500.60'	1101.08'	505.01'
105+09.87-110+03.53	N 07° 07' 59" E	489.34'	1076.33'	493.66'
111+26.77-113+84.10	N 05° 13' 15" W	257.32'	9384.17'	257.32'

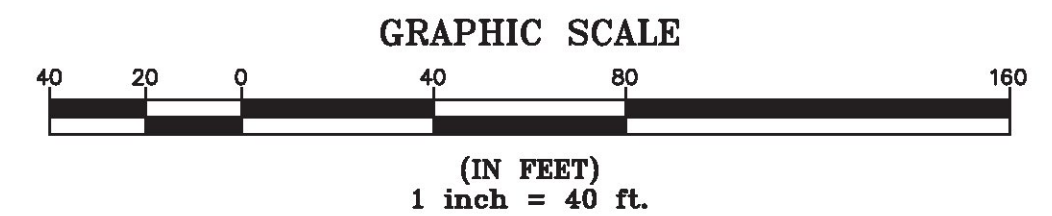


N/F  
 JOHN PAUL LEMIRE & SANDRA T. LEMIRE  
 BOOK 157, PAGE 193  
 OCT. 09, 1980



N/F  
 ROBERT P. LEMIRE, JR.  
 BOOK 419, PAGE 169  
 OCT. 14, 1999  
 (SEE REFERENCES AR37 AND AR38)

N/F  
 ADAM HAMMOND & TIAH HAMMOND  
 BOOK 822, PAGE 746  
 SEP. 03, 2010  
 (SEE REFERENCES AR35 AND AR36)

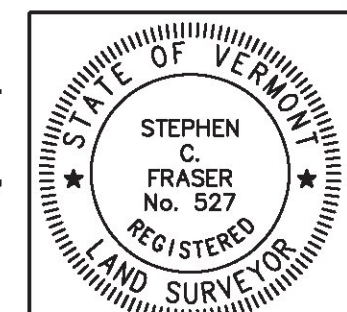


MON. NO.	DESCRIPTION	COORDINATE	STATION
36	MONUMENT TYPE "A" SET FLUSH (SEE DETAILS ON SHEET 2)	N 739561.17 E 1502016.25	110+03.53 24.75' LEFT
37	0.83" DIA. ALUMINUM MONUMENT SET FLUSH (SEE DETAILS ON SHEET 2)	N 739683.75 E 1502003.36	111+26.77 24.75' LEFT
38	MONUMENT TYPE "B" SET FLUSH (SEE DETAILS ON SHEET 2)	N 739940.67 E 1501979.88	113+84.10 24.75' LEFT
150	MONUMENT TYPE "A" SET FLUSH (SEE DETAILS ON SHEET 2)	N 739944.50 E 1502029.23	113+84.10 24.75' RIGHT
151	MONUMENT TYPE "A" SET FLUSH (SEE DETAILS ON SHEET 2)	N 739688.93 E 1502052.58	111+26.77 24.75' RIGHT
152	UNMONUMENTED POINT	N 739566.35 E 1502065.48	110+03.53 24.75' RIGHT
241	2" DIA BROKEN METAL FENCE POST FOUND 1.0' ABOVE GROUND STABLE	N 739642.71 E 1502129.02	110+72.82 95.93' RIGHT
242	4"x4" CONCRETE MONUMENT FOUND 0.1' BELOW GROUND WITH BRASS CAP MARKED "TCE LS 488" - STABLE	N 739706.12 E 1502109.36	111+38.03 83.01' RIGHT
243	4"x4" CONCRETE MONUMENT FOUND FLUSH WITH BRASS CAP MARKED "TCE LS 488" STABLE	N 739700.71 E 1502051.03	111+38.69 24.43' RIGHT

I certify that this plat is based on information abstracted from documents, parcel evidence, and physical evidence. The survey work identified hereon is consistent with this information.

I certify that this plat meets the requirements of 27 VSA Section 1403 and complies with Vermont Board of Land Surveyors Rules, Part 5.4 and 5.5, adopted under 26 VSA Section 2544(a)(9).

Signed: *Stephen C. Fraser*  
 Stephen C. Fraser, L.S. #527



STATUTORY SURVEY  
 STATE OF VERMONT  
 VERMONT ROUTE 128  
 ESSEX - WESTFORD  
 CHITTENDEN COUNTY, VERMONT

SCALE: 1" = 40'	PLAT COMPILATION DATE: 1-19-2015
R.O.W. WIDTH = 49.5'	PIN #: 12x602 SHEET 17 OF 39

Vermont Survey and Engineering, Inc.  
 79 River Street, Montpelier, Vermont  
 (802) 229-9138 ~ info@vermontsurvey.com

ORIGINAL DRAWING-INK ON POLYESTER FILM MEETING THE REQUIREMENTS OF 27 VSA 1403(b)(7)