

LINE	BEARING	DISTANCE
31-32	SEE CURVE TABLE	
32-33	N 22° 40' 50" E	73.18'
33-34	SEE CURVE TABLE	
34-35	N 20° 16' 21" E	276.17'
35-36	SEE CURVE TABLE	
152-153	SEE CURVE TABLE	
153-154	S 20° 16' 21" W	276.17'
154-155	SEE CURVE TABLE	
155-156	S 22° 40' 50" W	73.18'
156-157	SEE CURVE TABLE	

CURVE	CHORD BEARING	CHORD DISTANCE	RADIUS	LENGTH
31-32	N 21° 23' 19" E	188.67'	4184.50'	188.69'
33-34	N 21° 28' 35" E	30.10'	716.26'	30.10'
35-36	N 07° 07' 59" E	478.09'	1051.58'	482.31'
152-153	S 07° 07' 59" W	500.60'	1101.08'	505.01'
154-155	S 21° 28' 35" W	32.18'	765.76'	32.18'
156-157	S 21° 23' 19" W	186.44'	4135.00'	186.46'
99+41.81-101+29.38	N 21° 23' 19" E	187.56'	4159.75'	187.57'
102+02.56-102+33.70	N 21° 28' 35" E	31.14'	741.01'	31.14'
105+09.87-110+03.53	N 07° 07' 59" E	489.34'	1076.33'	493.66'

N/F
NEIL E. &
CHRISTINE D. TURNER
BOOK 354, PAGE 702
JUL. 25, 1996
(SEE REFERENCES
AR24, AR29 AND AR30)

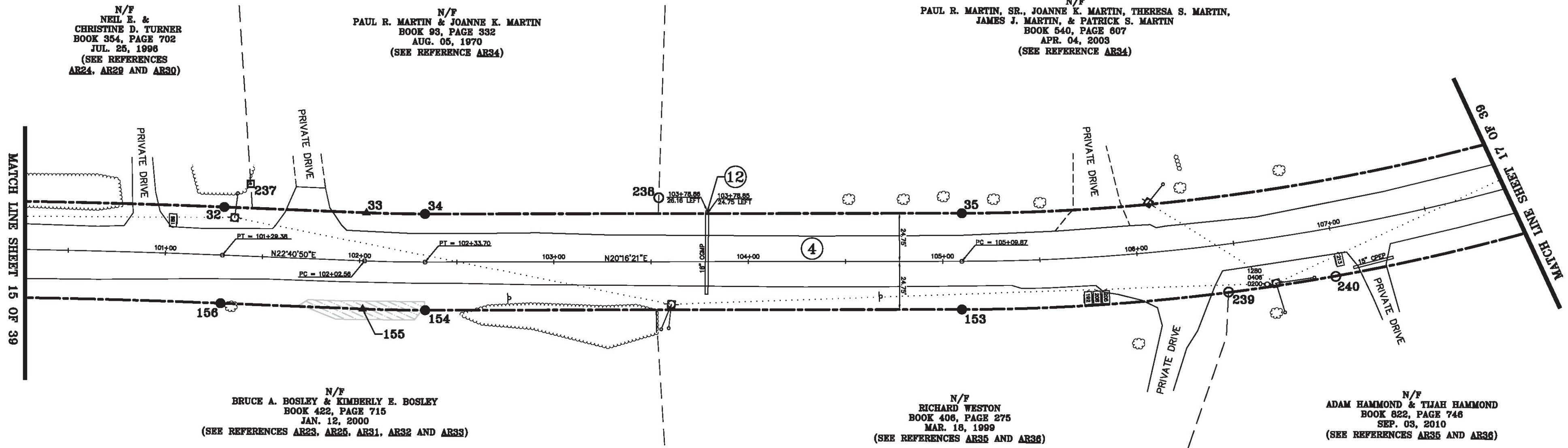
N/F
PAUL R. MARTIN & JOANNE K. MARTIN
BOOK 93, PAGE 332
AUG. 05, 1970
(SEE REFERENCE AR34)

N/F
PAUL R. MARTIN, SR., JOANNE K. MARTIN, THERESA S. MARTIN,
JAMES J. MARTIN, & PATRICK S. MARTIN
BOOK 540, PAGE 607
APR. 04, 2003
(SEE REFERENCE AR34)

N/F
BRUCE A. BOSLEY & KIMBERLY E. BOSLEY
BOOK 422, PAGE 715
JAN. 12, 2000
(SEE REFERENCES AR23, AR25, AR31, AR32 AND AR33)

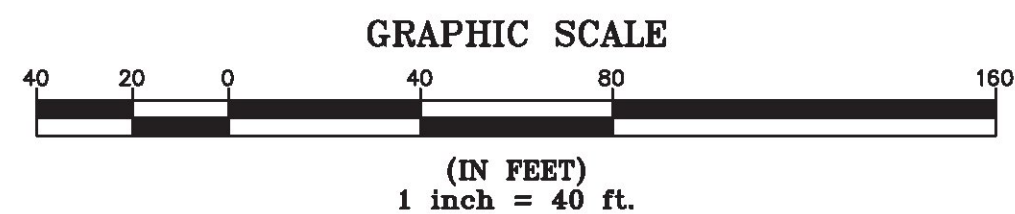
N/F
RICHARD WESTON
BOOK 406, PAGE 275
MAR. 18, 1999
(SEE REFERENCES AR35 AND AR36)

N/F
ADAM HAMMOND & TIAH HAMMOND
BOOK 822, PAGE 746
SEP. 03, 2010
(SEE REFERENCES AR35 AND AR36)



MON. NO.	DESCRIPTION	COORDINATE	STATION
32	MONUMENT TYPE "A" SET 0.5' ABOVE GROUND (SEE DETAILS ON SHEET 2)	N 738732.20 E 1501821.96	101+29.38 24.75' LEFT
33	UNMONUMENTED POINT	N 738799.71 E 1501850.18	102+02.56 24.75' LEFT
34	MONUMENT TYPE "A" SET FLUSH (SEE DETAILS ON SHEET 2)	N 738827.72 E 1501861.20	102+33.70 24.75' LEFT
35	MONUMENT TYPE "A" SET FLUSH (SEE DETAILS ON SHEET 2)	N 739086.78 E 1501956.89	105+09.87 24.75' LEFT
153	MONUMENT TYPE "A" SET FLUSH (SEE DETAILS ON SHEET 2)	N 739069.63 E 1502003.32	105+09.87 24.75' RIGHT
154	MONUMENT TYPE "A" SET FLUSH (SEE DETAILS ON SHEET 2)	N 738810.57 E 1501907.63	102+33.70 24.75' RIGHT
155	UNMONUMENTED POINT	N 738780.63 E 1501895.85	102+02.56 24.75' RIGHT

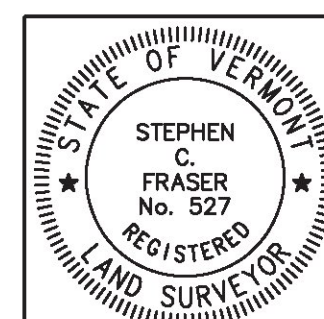
MON. NO.	DESCRIPTION	COORDINATE	STATION
156	MONUMENT TYPE "A" SET FLUSH (SEE DETAILS ON SHEET 2)	N 738713.11 E 1501867.64	101+29.38 24.75' RIGHT
237	6"X6" MARBLE MONUMENT FOUND 0.4' ABOVE GROUND WITH DRILL HOLE IN CENTER STABLE	N 738749.06 E 1501815.52	101+42.45 37.20' LEFT
238	1/2" DIA. IRON ROD FOUND 0.1' BELOW GROUND WITH CAP MARKED "LS 610" - STABLE	N 738943.38 E 1501895.19	103+53.97 32.94' LEFT
239	5/8" DIA. IRON ROD FOUND 0.1' BELOW GROUND WITH CAP MARKED "PEATMAN LS 902" STABLE	N 739201.37 E 1502042.60	106+44.35 24.54' RIGHT
240	1/2" DIA. IRON ROD FOUND 0.1' BELOW GROUND WITH CAP MARKED "VT 48 NH 248" STABLE	N 739255.88 E 1502054.26	106+98.84 24.94' RIGHT



I certify that this plat is based on information abstracted from documents, parcel evidence, and physical evidence. The survey work identified hereon is consistent with this information.

I certify that this plat meets the requirements of 27 VSA Section 1403 and complies with Vermont Board of Land Surveyors Rules, Part 5.4 and 5.5, adopted under 26 VSA Section 2544(a)(9).

Signed: *Stephen C. Fraser*
Stephen C. Fraser, L.S. #527



STATUTORY SURVEY
STATE OF VERMONT
VERMONT ROUTE 128
ESSEX - WESTFORD
CHITTENDEN COUNTY, VERMONT

SCALE: 1" = 40' | PLAT COMPILATION DATE: 1-19-2015
R.O.W. WIDTH = 49.5' | PIN #: 12x602 | SHEET 16 OF 39

Vermont Survey and Engineering, Inc.
79 River Street, Montpelier, Vermont
(802) 229-9138 ~ info@vermontsurvey.com

ORIGINAL DRAWING-INK ON POLYESTER FILM MEETING THE REQUIREMENTS OF 27 VSA 1403(b)(7)