

LINE	BEARING	DISTANCE
29-30	N 20° 05' 49" E	390.81'
30-31	N 20° 05' 49" E	390.81'
31-32	SEE CURVE TABLE	
156-157	SEE CURVE TABLE	
157-158	S 20° 05' 49" W	390.81'
158-159	S 20° 05' 49" W	390.81'

CURVE	CHORD BEARING	CHORD DISTANCE	RADIUS	LENGTH
31-32	N 21° 23' 19" E	188.67'	4184.50'	188.69'
156-157	S 21° 23' 19" W	186.44'	4135.00'	186.46'
99+41.81-101+29.38	N 21° 23' 19" E	187.56'	4159.75'	187.57'

N/F
ROBERT T. FUCILE & ANTHONY J. FUCILE
BOOK 914, PAGE 501
MAR. 18, 2014
APR. 17, 2014
(SEE REFERENCE AR28)

N/F
CHRISTIAN S. ADAMS
& ELIZABETH J. ADAMS
BOOK 880, PAGE 1017
SEP. 28, 2012
(SEE REFERENCE AR24)

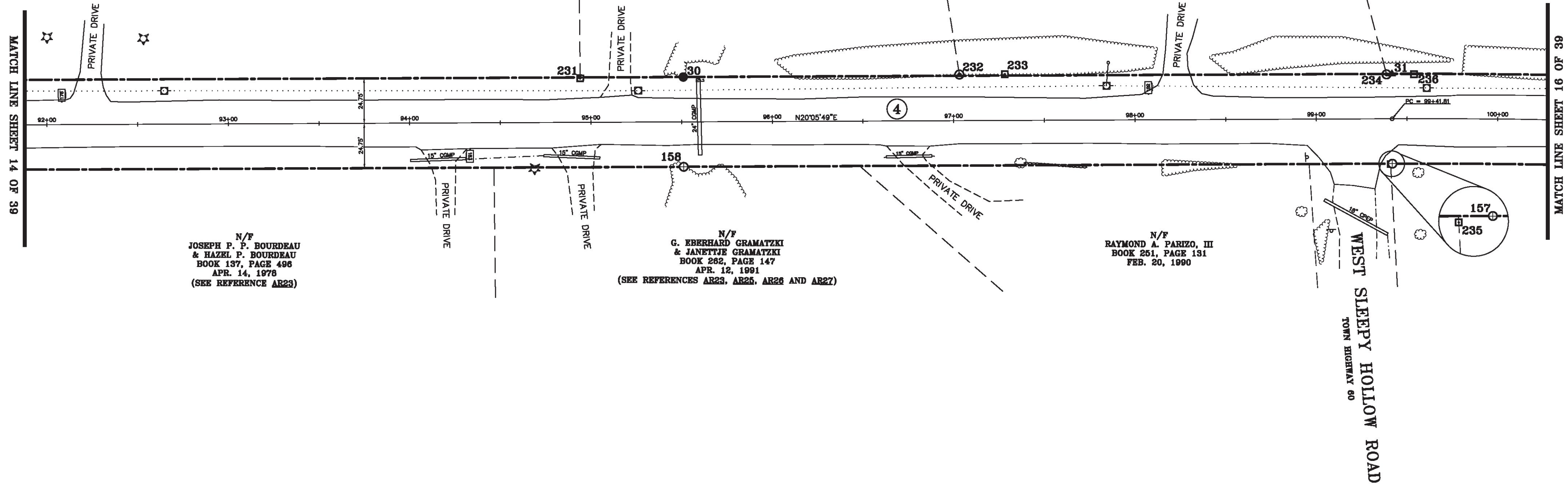
N/F
SABA A. HANNA & YARA B. HANNA
BOOK 372, PAGE 20
SEP. 19, 1997
(SEE REFERENCES AR24, AR29 AND AR30)

N/F
NEIL E. TURNER &
CHRISTINE D. TURNER
BOOK 364, PAGE 702
JUL. 25, 1996
(SEE REFERENCES
AR24, AR29 AND AR30)

N/F
JOSEPH P. P. BOURDEAU
& HAZEL P. BOURDEAU
BOOK 137, PAGE 496
APR. 14, 1978
(SEE REFERENCE AR23)

N/F
G. EBERHARD GRAMATZKI
& JANETTIE GRAMATZKI
BOOK 282, PAGE 147
APR. 12, 1991
(SEE REFERENCES AR23, AR25, AR26 AND AR27)

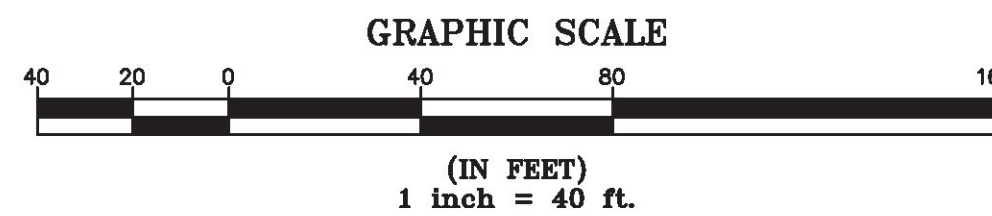
N/F
RAYMOND A. PARIZO, III
BOOK 251, PAGE 131
FEB. 20, 1990



ORIGINAL DRAWING-INK ON POLYESTER FILM MEETING THE REQUIREMENTS OF 27 VSA 1403(b)(7)

MON. NO.	DESCRIPTION	COORDINATE	STATION
30	MONUMENT TYPE "A" SET 0.8' ABOVE GROUND (SEE DETAILS ON SHEET 2)	N 738189.51 E 1501618.87	95+51.00 24.75' LEFT
31	MONUMENT TYPE "A" SET FLUSH (SEE DETAILS ON SHEET 2)	N 738556.52 E 1501753.16	99+41.81 24.75' LEFT
157	MONUMENT TYPE "B" SET FLUSH (SEE DETAILS ON SHEET 2)	N 738539.51 E 1501799.64	99+41.81 24.75' RIGHT
158	MONUMENT TYPE "B" SET 0.5' BELOW GROUND (SEE DETAILS ON SHEET 2)	N 738172.50 E 1501665.36	95+51.00 24.75' RIGHT
231	4"x4" CONCRETE MONUMENT FOUND 0.1' BELOW GROUND WITH DRILL HOLE IN CENTER STABLE	N 738135.96 E 1501599.76	94+94.15 24.30' LEFT
232	1" O.D. IRON PIPE FOUND 1.8' ABOVE GROUND WITH CAP STABLE	N 738332.73 E 1501670.51	97+03.25 25.46' LEFT

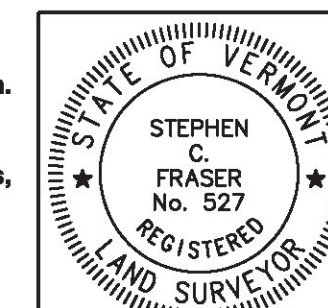
MON. NO.	DESCRIPTION	COORDINATE	STATION
233	4"x4" MARBLE MONUMENT FOUND 0.2' ABOVE GROUND WITH DRILL HOLE IN CENTER STABLE	N 738356.27 E 1501679.07	97+28.30 25.51' LEFT
234	1" O.D. IRON PIPE FOUND 1.1' ABOVE GROUND WITH CAP MARKED "PEA" - STABLE	N 738553.61 E 1501752.36	99+38.81 24.49' LEFT
235	4"x4" CONCRETE MONUMENT FOUND 0.1' BELOW GROUND WITH DRILL HOLE IN CENTER STABLE	N 738538.52 E 1501799.47	99+40.82 24.93' RIGHT
236	4"x4" MARBLE MONUMENT FOUND FLUSH WITH BRASS CAP MARKED "ESSEX TH 60 425 VT 574" - STABLE	N 738567.79 E 1501757.54	99+53.83 24.52' LEFT



I certify that this plat is based on information abstracted from documents, parcel evidence, and physical evidence. The survey work identified hereon is consistent with this information.

I certify that this plat meets the requirements of 27 VSA Section 1403 and complies with Vermont Board of Land Surveyors Rules, Part 5.4 and 5.5, adopted under 26 VSA Section 2544(a)(9).

Signed: *Stephen C. Fraser*
Stephen C. Fraser, L.S. #527



STATUTORY SURVEY
STATE OF VERMONT
VERMONT ROUTE 128
ESSEX - WESTFORD
CHITTENDEN COUNTY, VERMONT

SCALE: 1" = 40' PLAT COMPILATION DATE: 1-19-2015
R.O.W. WIDTH = 49.5' PIN #: 12x602 SHEET 15 OF 39

Vermont Survey and Engineering, Inc.
79 River Street, Montpelier, Vermont
(802) 229-9138 ~ info@vermontsurvey.com