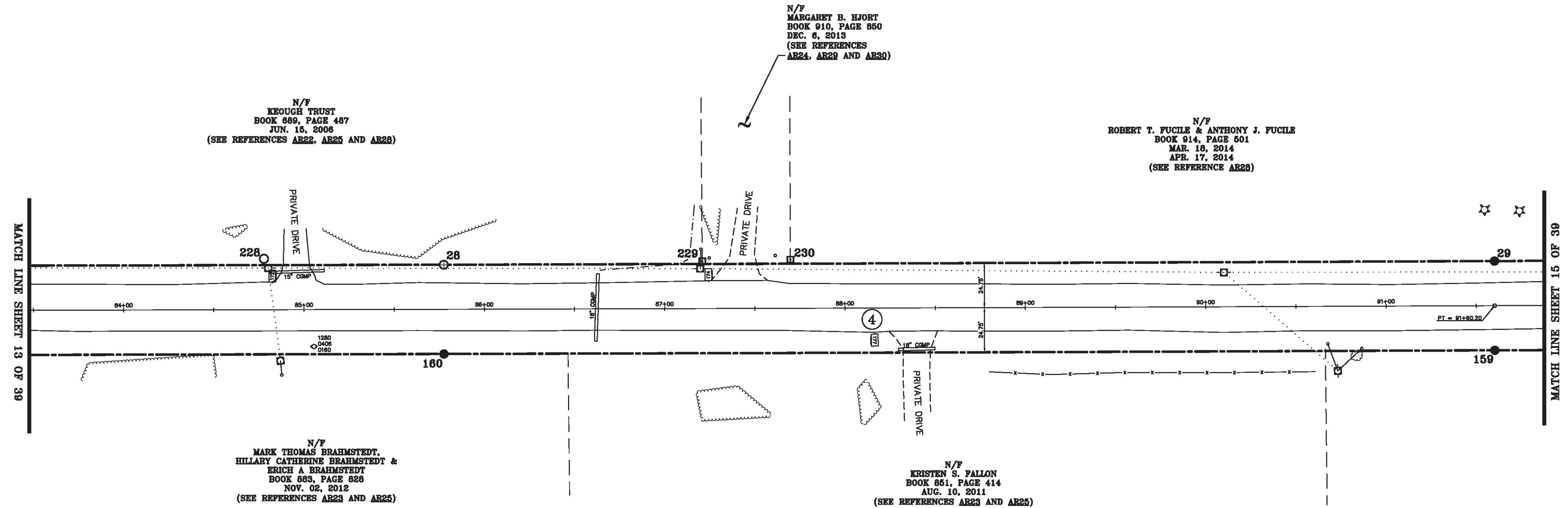
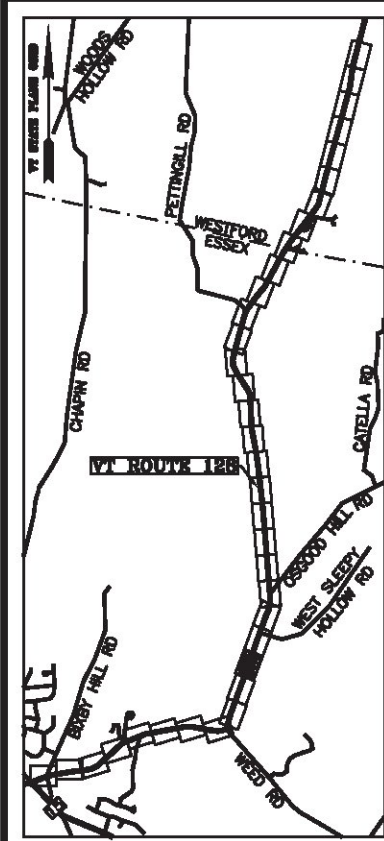


LINE	BEARING	DISTANCE
27-28	SEE CURVE TABLE	
28-29	SEE CURVE TABLE	
29-30	N 20° 05' 49" E	390.81'
158-159	S 20° 05' 49" W	390.81'
159-160	SEE CURVE TABLE	
160-161	SEE CURVE TABLE	

CURVE	CHORD BEARING	CHORD DISTANCE	RADIUS	LENGTH
27-28	N 20° 15' 20" E	582.60'	315658.05'	582.60'
28-29	N 20° 08' 59" E	582.60'	315658.05'	582.60'
159-160	S 20° 08' 59" W	582.69'	315707.55'	582.70'
160-161	S 20° 15' 20" W	582.69'	315707.55'	582.70'
79+94.90-91+60.20	N 20° 12' 09" E	1165.30'	315682.80'	1165.30'



N/F
KEOUGH TRUST
BOOK 889, PAGE 487
JUN. 15, 2006
(SEE REFERENCES AR22, AR25 AND AR28)

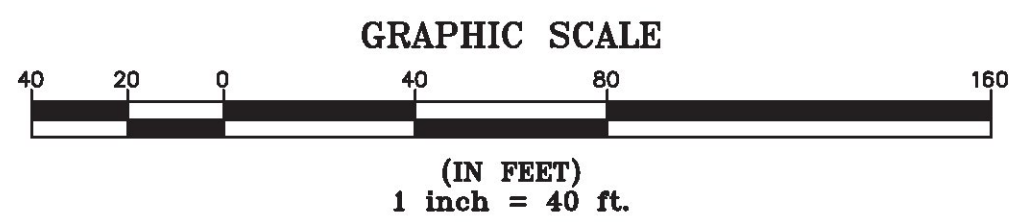
N/F
MARGARET B. HJORT
BOOK 910, PAGE 850
DEC. 6, 2013
(SEE REFERENCES
AR24, AR29 AND AR30)

N/F
ROBERT T. FUCILE & ANTHONY J. FUCILE
BOOK 914, PAGE 501
MAR. 18, 2014
APR. 17, 2014
(SEE REFERENCE AR28)

N/F
MARK THOMAS BRAHMSTEDT,
HILLARY CATHERINE BRAHMSTEDT &
ERICH A BRAHMSTEDT
BOOK 883, PAGE 828
NOV. 02, 2012
(SEE REFERENCES AR23 AND AR25)

N/F
KRISTEN S. FALLON
BOOK 861, PAGE 414
AUG. 10, 2011
(SEE REFERENCES AR23 AND AR25)

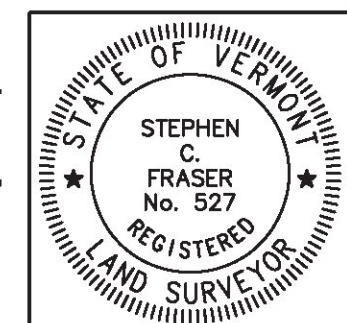
MON. NO.	DESCRIPTION	COORDINATE	STATION
28	MONUMENT TYPE "B" SET FLUSH (SEE DETAILS ON SHEET 2)	N 737275.55 E 1501283.90	85+77.55 24.75' LEFT
29	MONUMENT TYPE "A" SET FLUSH (SEE DETAILS ON SHEET 2)	N 737822.50 E 1501484.59	91+60.20 24.75' LEFT
159	MONUMENT TYPE "A" SET FLUSH (SEE DETAILS ON SHEET 2)	N 737805.49 E 1501531.07	91+60.20 24.75' RIGHT
160	MONUMENT TYPE "A" SET 0.5' ABOVE GROUND (SEE DETAILS ON SHEET 2)	N 737258.46 E 1501330.35	85+77.55 24.75' RIGHT
228	3/4" DIA. IRON ROD FOUND 0.3' BELOW GROUND - STABLE	N 737183.22 E 1501246.13	84+77.85 28.30' LEFT
229	4"x4" CONCRETE MONUMENT FOUND 0.9' ABOVE GROUND WITH DRILL HOLE IN CENTER BENT & STABLE	N 737410.61 E 1501331.91	87+20.89 26.30' LEFT
230	4"x4" CONCRETE MONUMENT FOUND 0.2' BELOW GROUND WITH TOP BROKEN OFF - STABLE	N 737456.74 E 1501348.08	87+69.78 27.03' LEFT



I certify that this plat is based on information abstracted from documents, parcel evidence, and physical evidence. The survey work identified hereon is consistent with this information.

I certify that this plat meets the requirements of 27 VSA Section 1403 and complies with Vermont Board of Land Surveyors Rules, Part 5.4 and 5.5, adopted under 26 VSA Section 2544(a)(9).

Signed: *Stephen C. Fraser*
Stephen C. Fraser, L.S. #527



STATUTORY SURVEY
STATE OF VERMONT
VERMONT ROUTE 128
ESSEX - WESTFORD
CHITTENDEN COUNTY, VERMONT

SCALE: 1"= 40' PLAT COMPILATION DATE: 1-19-2015
R.O.W. WIDTH = 49.5' PIN #: 12x602 SHEET 14 OF 39

Vermont Survey and Engineering, Inc.
79 River Street, Montpelier, Vermont
(802) 229-9138 ~ info@vermontsurvey.com

ORIGINAL DRAWING-INK ON POLYESTER FILM MEETING THE REQUIREMENTS OF 27 VSA 1403(b)(7)