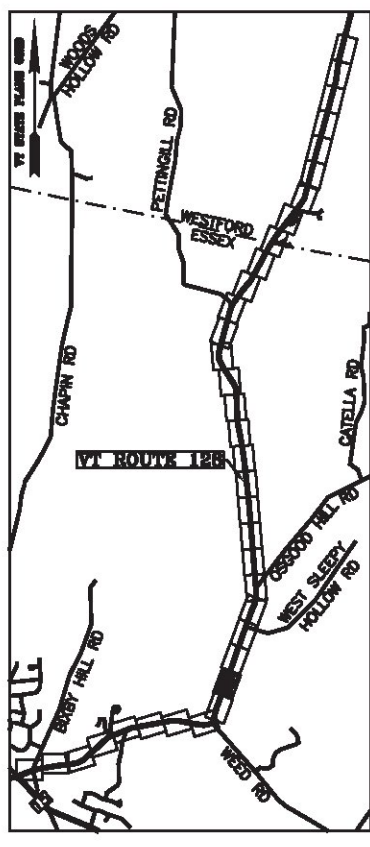


BASIS OF BEARINGS & COORDINATES
 Datum: Horizontal - NAD 83(2007) SPC (4400 FT) sFT

LINE	BEARING	DISTANCE
25-26	N 20° 18' 30" E	378.14'
26-27	N 20° 18' 30" E	379.22'
27-28	SEE CURVE TABLE	
160-161	SEE CURVE TABLE	
161-162	S 20° 18' 30" W	379.22'
162-163	S 20° 18' 30" W	378.14'

CURVE	CHORD BEARING	CHORD DISTANCE	RADIUS	LENGTH
27-28	N 20° 15' 20" E	582.60'	315658.05'	582.60'
160-161	S 20° 15' 20" W	582.69'	315707.55'	582.70'
79+94.90-91+60.20	N 20° 12' 09" E	1165.30'	315682.80'	1165.30'



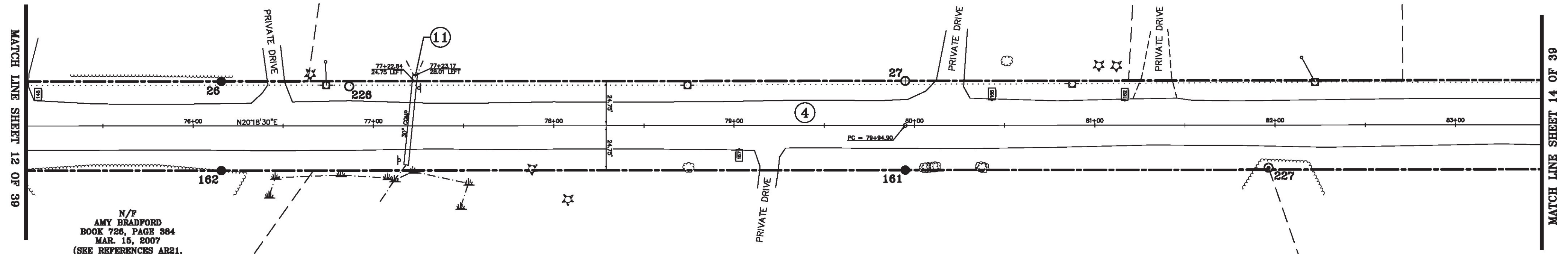
N/F
 WILLIAM W. CARRUTH
 & CAROL CARRUTH
 BOOK 860, PAGE 375
 MAY 03, 2012
 (SEE REFERENCE AR25)

N/F
 PETER E. PICARD
 & WILHELMINA PICARD
 BOOK 430, PAGE 374
 JUN. 26, 2000
 (SEE REFERENCE AR25)

N/F
 STEVEN B. STODDARD
 & CHRISTINE M. STODDARD,
 KURT BECHER SHANGRAW
 & JESSICA LYN SHANGRAW
 BOOK 861, PAGE 121
 OCT. 02, 2012
 (SEE REFERENCE AR25)

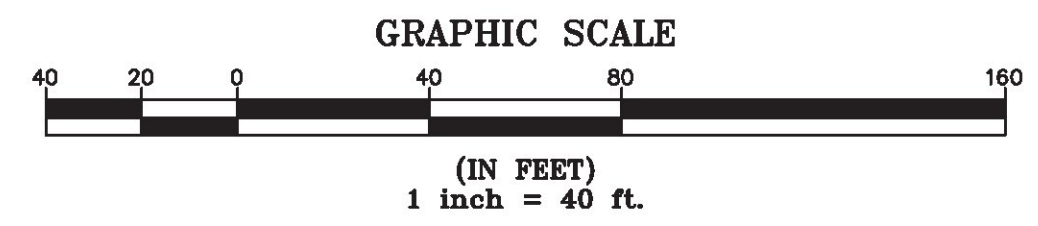
N/F
 AMY BRADFORD
 BOOK 728, PAGE 384
 MAR. 15, 2007
 (SEE REFERENCES AR21,
 AR23, AND AR25)

N/F
 TODD KLIMOSKI & EDITH KLIMOSKI
 BOOK 725, PAGE 89
 JUL. 20, 2007
 (SEE REFERENCES AR23 AND AR25)



ORIGINAL DRAWING-INK ON POLYESTER FILM MEETING THE REQUIREMENTS OF 27 VSA 1403(b)(7)

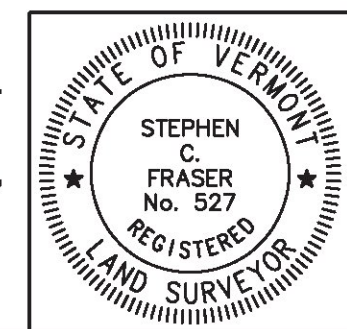
MON. NO.	DESCRIPTION	COORDINATE	STATION
26	MONUMENT TYPE "A" SET FLUSH (SEE DETAILS ON SHEET 2)	N 736373.33 E 1500950.58	76+15.68 24.75' LEFT
27	MONUMENT TYPE "B" SET FLUSH (SEE DETAILS ON SHEET 2)	N 736728.98 E 1501082.19	79+94.90 24.75' LEFT
161	MONUMENT TYPE "A" SET FLUSH (SEE DETAILS ON SHEET 2)	N 736711.80 E 1501128.62	79+94.90 24.75' RIGHT
162	MONUMENT TYPE "A" SET 0.5' ABOVE GROUND (SEE DETAILS ON SHEET 2)	N 736356.15 E 1500977.00	76+15.68 24.75' RIGHT
226	1/2" SQUARE PEG FOUND 0.9' BELOW GROUND - STABLE	N 736438.86 E 1500977.88	76+86.61 21.89' LEFT
227	1" O.D. IRON PIPE FOUND 1.7' ABOVE GROUND - UNSTABLE	N 736901.13 E 1501197.41	81+96.32 23.62' RIGHT



I certify that this plat is based on information abstracted from documents, parol evidence, and physical evidence. The survey work identified hereon is consistent with this information.

I certify that this plat meets the requirements of 27 VSA Section 1403 and complies with Vermont Board of Land Surveyors Rules, Part 5.4 and 5.5, adopted under 26 VSA Section 2544(a)(9).

Signed: *Stephen C. Fraser*
 Stephen C. Fraser, L.S. #527



STATUTORY SURVEY
STATE OF VERMONT
VERMONT ROUTE 128
 ESSEX - WESTFORD
 CHITTENDEN COUNTY, VERMONT

SCALE: 1" = 40'	PLAT COMPILATION DATE: 1-19-2015
R.O.W. WIDTH = 49.5'	PIN #: 12x602 SHEET 13 OF 39

Vermont Survey and Engineering, Inc.
 79 River Street, Montpelier, Vermont
 (802) 229-9138 ~ info@vermontsurvey.com