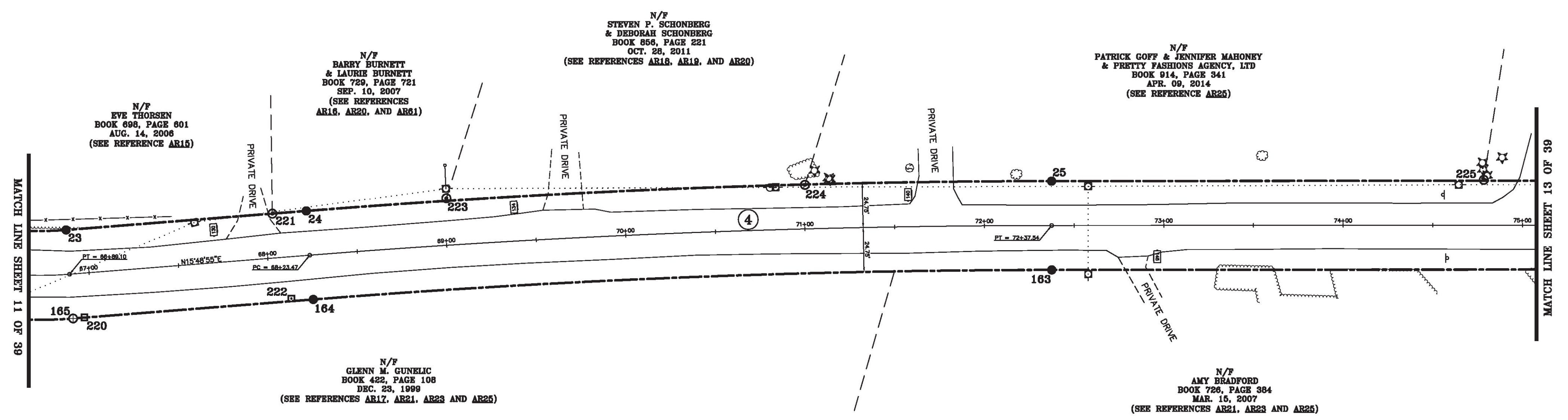


LINE	BEARING	DISTANCE
22-23	SEE CURVE TABLE	
23-24	N 15° 48' 55" E	134.37'
24-25	SEE CURVE TABLE	
25-26	N 20° 18' 30" E	378.14'
162-163	S 20° 18' 30" W	378.14'
163-164	SEE CURVE TABLE	
164-165	S 15° 48' 55" W	134.37'
165-166	SEE CURVE TABLE	

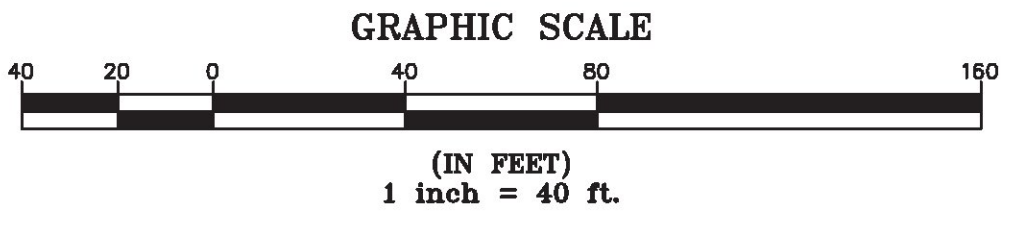
CURVE	CHORD BEARING	CHORD DISTANCE	RADIUS	LENGTH
22-23	N 51° 21' 02" E	216.09'	185.90'	230.59'
24-25	N 18° 03' 42" E	415.90'	5304.94'	416.01'
163-164	S 18° 03' 42" W	412.02'	5255.44'	412.13'
165-166	S 51° 21' 02" W	273.63"	235.40'	291.99'
64+27.81-66+89.10	N 51° 21' 02" E	244.86'	210.65'	261.29'
68+23.47-72+37.54	N 18° 03' 42" E	413.96'	5280.19'	414.07'



ORIGINAL DRAWING-INK ON POLYESTER FILM MEETING THE REQUIREMENTS OF 27 VSA 1403(b)(7)

MON. NO.	DESCRIPTION	COORDINATE	STATION
23	MONUMENT TYPE "A" SET 0.5' ABOVE GROUND (SEE DETAILS ON SHEET 2)	N 735494.01 E 1500653.77	68+89.10 24.75' LEFT
24	MONUMENT TYPE "A" SET FLUSH (SEE DETAILS ON SHEET 2)	N 735623.28 E 1500690.39	68+23.47 24.75' LEFT
25	MONUMENT TYPE "A" SET FLUSH (SEE DETAILS ON SHEET 2)	N 736018.69 E 1500819.33	72+37.54 24.75' LEFT
163	MONUMENT TYPE "A" SET FLUSH (SEE DETAILS ON SHEET 2)	N 736001.51 E 1500865.76	72+37.54 24.75' RIGHT
164	MONUMENT TYPE "A" SET FLUSH (SEE DETAILS ON SHEET 2)	N 735609.79 E 1500738.01	68+23.47 24.75' RIGHT
165	MONUMENT TYPE "B" SET FLUSH (SEE DETAILS ON SHEET 2)	N 735480.52 E 1500701.39	66+89.10 24.75' RIGHT
220	4"x4" MARBLE MONUMENT FOUND 0.1' BELOW GROUND WITH DRILL HOLE IN CENTER STABLE	N 735486.67 E 1500703.01	66+95.46 24.63' RIGHT

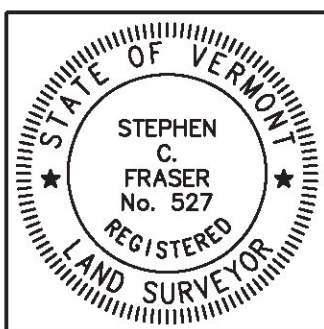
MON. NO.	DESCRIPTION	COORDINATE	STATION
221	1" I.D. IRON PIPE FOUND 0.3' BELOW GROUND - STABLE	N 735605.01 E 1500685.23	68+04.48 24.73' LEFT
222	4"x4" MARBLE MONUMENT FOUND 0.1' BELOW GROUND WITH DRILL HOLE IN CENTER STABLE	N 735598.48 E 1500733.29	68+11.30 23.29' RIGHT
223	1 1/4" O.D. IRON PIPE FOUND 0.1' BELOW GROUND WITH CAP - STABLE	N 735698.94 E 1500710.94	69+01.48 26.17' LEFT
224	1/2" I.D. IRON PIPE FOUND 0.1' ABOVE GROUND BENT & STABLE	N 735888.98 E 1500773.46	71+00.59 24.54' LEFT
225	1" I.D. IRON PIPE FOUND 1.0' ABOVE GROUND - STABLE	N 736244.82 E 1500902.46	74+78.46 25.27' LEFT



I certify that this plat is based on information abstracted from documents, parcel evidence, and physical evidence. The survey work identified hereon is consistent with this information.

I certify that this plat meets the requirements of 27 VSA Section 1403 and complies with Vermont Board of Land Surveyors Rules, Part 5.4 and 5.5, adopted under 26 VSA Section 2544(a)(9).

Signed: *Stephen C. Fraser*
Stephen C. Fraser, L.S. #527



STATUTORY SURVEY
STATE OF VERMONT
VERMONT ROUTE 128
ESSEX - WESTFORD
CHITTENDEN COUNTY, VERMONT

SCALE: 1" = 40' | PLAT COMPILATION DATE: 1-19-2015
R.O.W. WIDTH = 49.5' | PIN #: 12x602 | SHEET 12 OF 39

Vermont Survey and Engineering, Inc.
79 River Street, Montpelier, Vermont
(802) 229-9138 ~ info@vermontsurvey.com