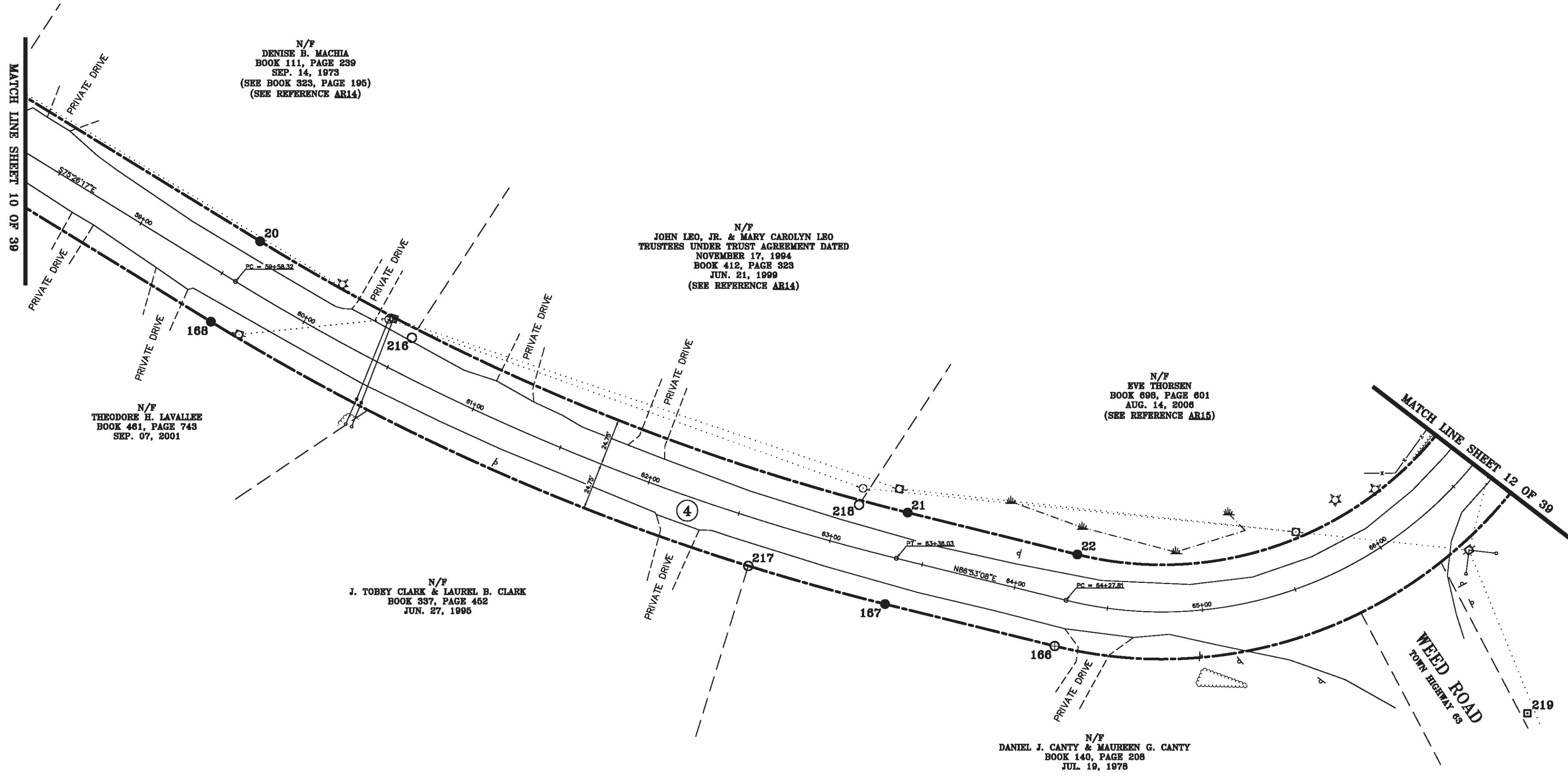


LINE	BEARING	DISTANCE
19-20	S 75° 26' 17" E	197.41'
20-21	SEE CURVE TABLE	
21-22	N 86° 53' 08" E	91.78'
22-23	SEE CURVE TABLE	
165-166	SEE CURVE TABLE	
166-167	S 86° 53' 08" W	91.78'
167-168	SEE CURVE TABLE	
168-169	N 75° 26' 17" W	197.41'

CURVE	CHORD BEARING	CHORD DISTANCE	RADIUS	LENGTH
20-21	S 84° 16' 34" E	368.61'	1199.56'	370.08'
22-23	N 51° 21' 02" E	216.09'	185.90'	230.59'
165-166	S 51° 21' 02" W	273.63'	235.40'	291.99'
167-168	N 84° 16' 34" W	383.82'	1249.06'	385.35'
59+58.32-63+36.03	S 84° 16' 34" E	376.22'	1224.31'	377.72'
64+27.81-66+89.10	N 51° 21' 02" E	244.86'	210.65'	261.29'

MON. NO.	DESCRIPTION	COORDINATE	STATION
20	MONUMENT TYPE "A" SET FLUSH (SEE DETAILS ON SHEET 2)	N 735390.82 E 1500026.58	59+58.32 24.75' LEFT
21	MONUMENT TYPE "A" SET FLUSH (SEE DETAILS ON SHEET 2)	N 735354.06 E 1500393.37	63+36.03 24.75' LEFT
22	MONUMENT TYPE "A" SET FLUSH (SEE DETAILS ON SHEET 2)	N 735359.05 E 1500485.01	64+27.81 24.75' LEFT
166	MONUMENT TYPE "B" SET FLUSH (SEE DETAILS ON SHEET 2)	N 735309.62 E 1500487.69	64+27.81 24.75' RIGHT
167	MONUMENT TYPE "A" SET FLUSH (SEE DETAILS ON SHEET 2)	N 735304.63 E 1500396.05	63+36.03 24.75' RIGHT

MON. NO.	DESCRIPTION	COORDINATE	STATION
168	MONUMENT TYPE "A" SET FLUSH (SEE DETAILS ON SHEET 2)	N 735342.91 E 1500014.14	59+58.32 24.75' RIGHT
216	5/8" DIA. IRON ROD FOUND 0.5' BELOW GROUND - STABLE	N 735365.69 E 1500117.61	60+54.37 19.60' LEFT
217	5/8" DIA. IRON ROD FOUND 0.2' BELOW GROUND - STABLE	N 735302.77 E 1500321.52	62+62.94 24.79' RIGHT
218	1" DIA. IRON ROD FOUND 0.8' BELOW GROUND - STABLE	N 735350.45 E 1500367.74	63+09.77 22.26' LEFT
219	1" I.D. IRON PIPE FOUND 0.5' BELOW GROUND - STABLE	N 735348.41 E 1500735.42	66+11.24 115.52' RIGHT



N/F
DENISE B. MACHIA
BOOK 111, PAGE 239
SEP. 14, 1973
(SEE BOOK 323, PAGE 195)
(SEE REFERENCE AR14)

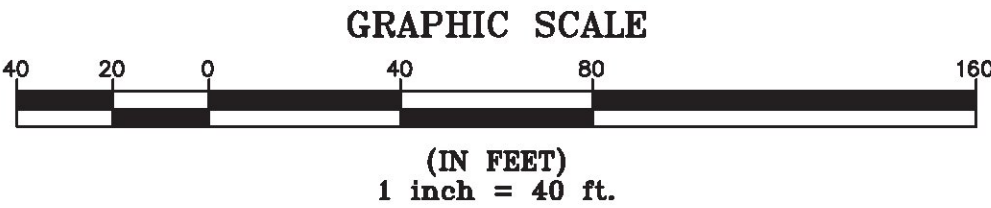
N/F
JOHN LEO, JR. & MARY CAROLYN LEO
TRUSTEES UNDER TRUST AGREEMENT DATED
NOVEMBER 17, 1994
BOOK 412, PAGE 323
JUN. 21, 1999
(SEE REFERENCE AR14)

N/F
THEODORE H. LAVALLEE
BOOK 481, PAGE 743
SEP. 07, 2001

N/F
EVE THORSEN
BOOK 698, PAGE 601
AUG. 14, 2006
(SEE REFERENCE AR15)

N/F
J. TOBEY CLARK & LAUREL B. CLARK
BOOK 337, PAGE 452
JUN. 27, 1996

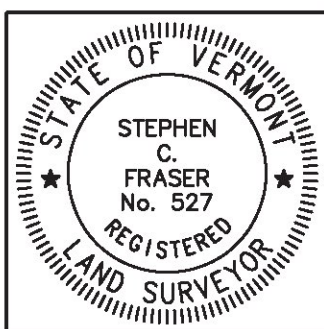
N/F
DANIEL J. CANTY & MAUREEN G. CANTY
BOOK 140, PAGE 208
JUL. 19, 1978



I certify that this plat is based on information abstracted from documents, parol evidence, and physical evidence. The survey work identified hereon is consistent with this information.

I certify that this plat meets the requirements of 27 VSA Section 1403 and complies with Vermont Board of Land Surveyors Rules, Part 5.4 and 5.5, adopted under 26 VSA Section 2544(a)(9).

Signed: *Stephen C. Fraser*
Stephen C. Fraser, L.S. #527



STATUTORY SURVEY
STATE OF VERMONT
VERMONT ROUTE 128
ESSEX - WESTFORD
CHITTENDEN COUNTY, VERMONT

SCALE: 1" = 40' PLAT COMPILATION DATE: 1-19-2015
R.O.W. WIDTH = 49.5' PIN #: 12x602 SHEET 11 OF 39

Vermont Survey and Engineering, Inc.
79 River Street, Montpelier, Vermont
(802) 229-9138 ~ info@vermontsurvey.com

ORIGINAL DRAWING-INK ON POLYESTER FILM MEETING THE REQUIREMENTS OF 27 VSA 1403(b)(7)