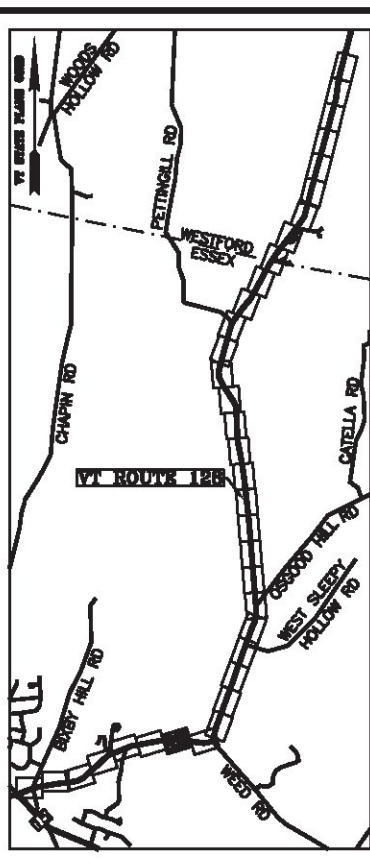




LINE	BEARING	DISTANCE
16-17	N 81° 04' 44" E	466.11'
17-18	SEE CURVE TABLE	
18-19	SEE CURVE TABLE	
19-20	S 75° 26' 17" E	197.41'
168-169	N 75° 26' 17" W	197.41'
169-170	SEE CURVE TABLE	
170-171	SEE CURVE TABLE	
171-172	S 81° 04' 44" W	466.11'

CURVE	CHORD BEARING	CHORD DISTANCE	RADIUS	LENGTH
17-18	N 82° 45' 23" E	87.90'	1501.51'	87.91'
18-19	S 85° 30' 08" E	524.79'	1501.51'	527.49'
169-170	N 85° 30' 08" W	507.49'	1452.01'	510.10'
170-171	S 82° 45' 23" W	85.00'	1452.01'	85.01'
51+55.65-57+60.91	S 87° 10' 46" E	601.03'	1476.76'	605.26'

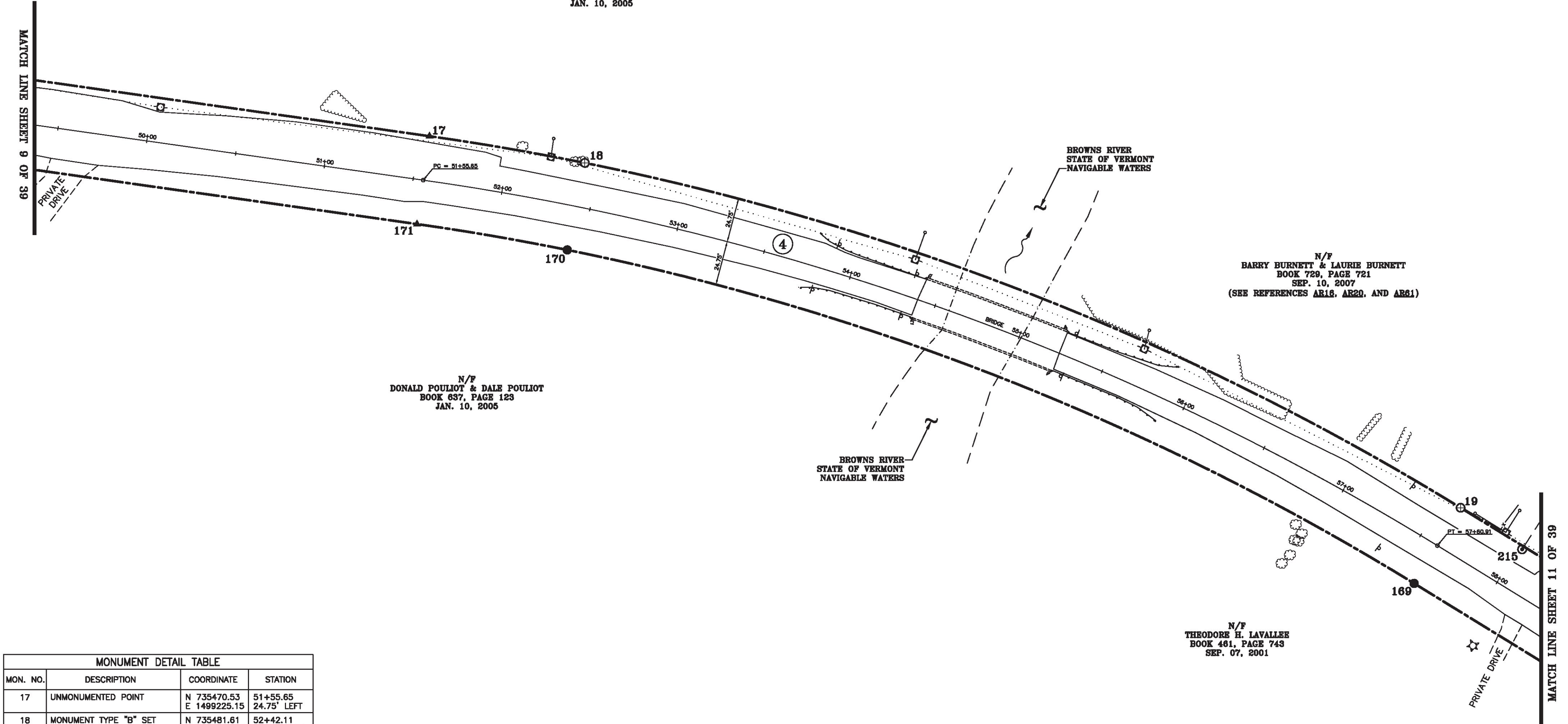


N/F
DONALD POULIOT & DALE POULIOT
BOOK 637, PAGE 123
JAN. 10, 2005

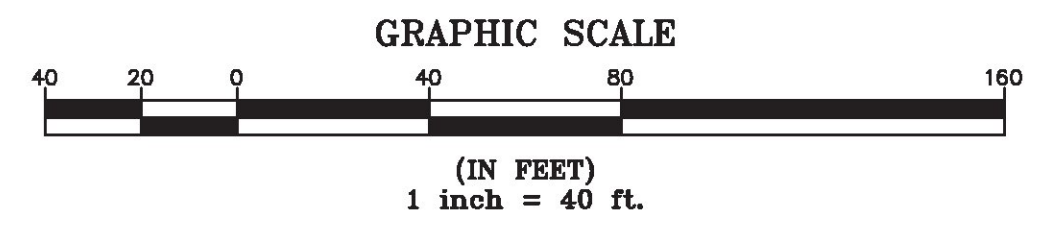
N/F
BARRY BURNETT & LAURIE BURNETT
BOOK 729, PAGE 721
SEP. 10, 2007
(SEE REFERENCES AR18, AR20, AND AR61)

N/F
DONALD POULIOT & DALE POULIOT
BOOK 637, PAGE 123
JAN. 10, 2005

N/F
THEODORE H. LAVALLEE
BOOK 461, PAGE 743
SEP. 07, 2001



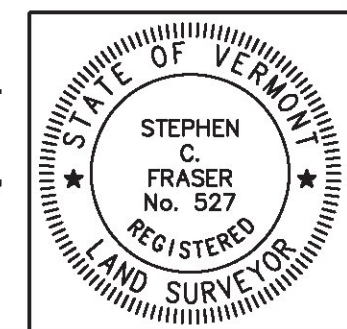
MON. NO.	DESCRIPTION	COORDINATE	STATION
17	UNMONUMENTED POINT	N 735470.53 E 1499225.15	51+55.65 24.75' LEFT
18	MONUMENT TYPE "B" SET FLUSH (SEE DETAILS ON SHEET 2)	N 735481.61 E 1499312.35	52+42.11 24.75' LEFT
19	MONUMENT TYPE "B" SET FLUSH (SEE DETAILS ON SHEET 2)	N 735440.46 E 1499835.52	57+60.91 24.75' LEFT
169	MONUMENT TYPE "A" SET FLUSH (SEE DETAILS ON SHEET 2)	N 735392.55 E 1499823.08	57+60.91 24.75' RIGHT
170	MONUMENT TYPE "A" SET 2.0' BELOW GROUND (SEE DETAILS ON SHEET 2)	N 735432.34 E 1499317.15	52+42.11 24.75' RIGHT
171	UNMONUMENTED POINT	N 735421.63 E 1499232.83	51+55.65 24.75' RIGHT
215	1" I.D. IRON PIPE FOUND 0.3' BELOW GROUND - STABLE	N 735428.35 E 1499875.10	58+02.26 22.98' LEFT



I certify that this plat is based on information abstracted from documents, parol evidence, and physical evidence. The survey work identified hereon is consistent with this information.

I certify that this plat meets the requirements of 27 VSA Section 1403 and complies with Vermont Board of Land Surveyors Rules, Part 5.4 and 5.5, adopted under 26 VSA Section 2544(a)(9).

Signed: *Stephen C. Fraser*
Stephen C. Fraser, L.S. #527



STATUTORY SURVEY
STATE OF VERMONT
VERMONT ROUTE 128
ESSEX - WESTFORD
CHITTENDEN COUNTY, VERMONT

SCALE: 1" = 40' | PLAT COMPILATION DATE: 1-19-2015
R.O.W. WIDTH = 49.5' | PIN #: 12x602 | SHEET 10 OF 39

Vermont Survey and Engineering, Inc.
79 River Street, Montpelier, Vermont
(802) 229-9138 ~ info@vermontsurvey.com

ORIGINAL DRAWING-INK ON POLYESTER FILM MEETING THE REQUIREMENTS OF 27 VSA 1403(b)(7)

MATCH LINE SHEET 9 OF 39

MATCH LINE SHEET 11 OF 39