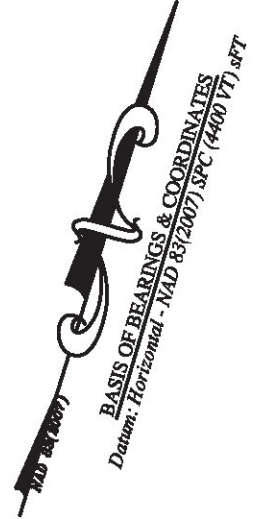


LINE	BEARING	DISTANCE
14-15	SEE CURVE TABLE	
15-16	N 81° 04' 44" E	465.34'
16-17	N 81° 04' 44" E	466.11'
171-172	S 81° 04' 44" W	466.11'
172-173	S 81° 04' 44" W	465.34'
173-174	SEE CURVE TABLE	

CURVE	CHORD BEARING	CHORD DISTANCE	RADIUS	LENGTH
14-15	N 74° 50' 37" E	391.30'	1801.39'	392.07'
173-174	S 74° 50' 37" W	380.55'	1751.89'	381.30'
38+37.51-42+24.20	N 74° 50' 37" E	385.92'	1776.64'	386.69'

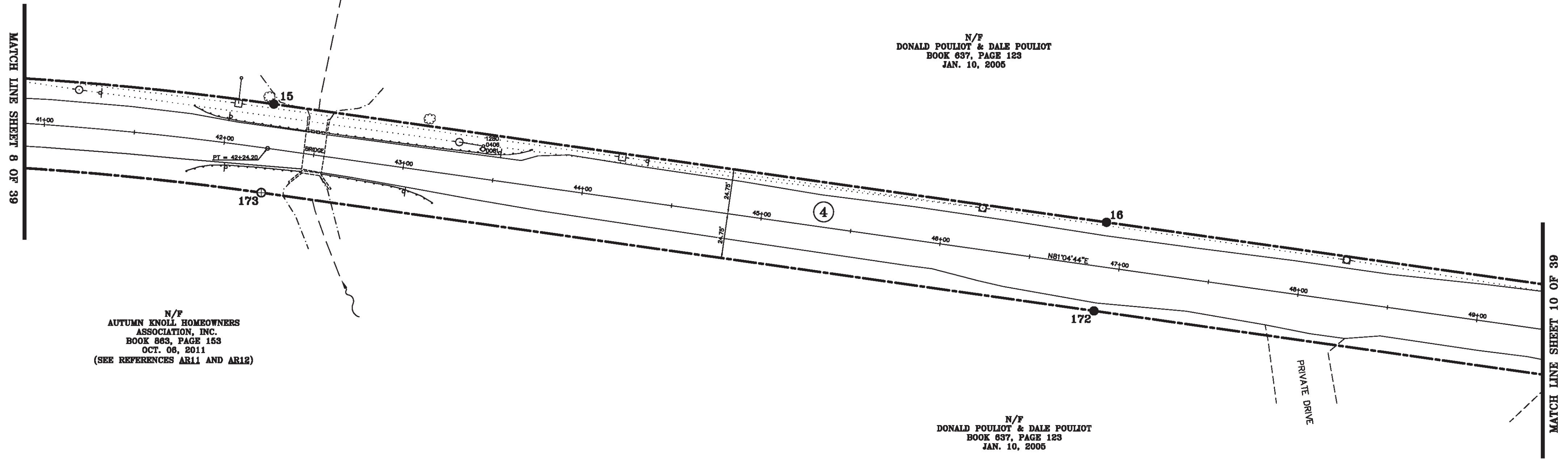


N/F  
JACQUELINE COTA  
& DAVID COTA  
BOOK 471, PAGE 895  
NOV. 23, 2001

N/F  
DONALD POULIOT & DALE POULIOT  
BOOK 637, PAGE 123  
JAN. 10, 2005

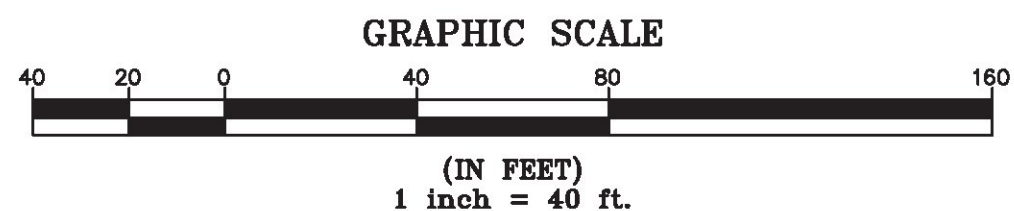
N/F  
AUTUMN KNOLL HOMEOWNERS  
ASSOCIATION, INC.  
BOOK 863, PAGE 153  
OCT. 06, 2011  
(SEE REFERENCES AR11 AND AR12)

N/F  
DONALD POULIOT & DALE POULIOT  
BOOK 637, PAGE 123  
JAN. 10, 2005



ORIGINAL DRAWING—INK ON POLYESTER FILM MEETING THE REQUIREMENTS OF 27 VSA 1403(b)(7)

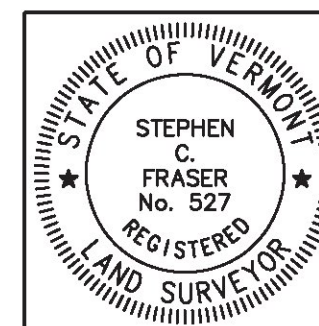
MON. NO.	DESCRIPTION	COORDINATE	STATION
15	MONUMENT TYPE "A" SET 0.7' ABOVE GROUND (SEE DETAILS ON SHEET 2)	N 735326.08 E 1498304.97	42+24.20 24.75' LEFT
16	MONUMENT TYPE "A" SET FLUSH (SEE DETAILS ON SHEET 2)	N 735398.25 E 1498764.68	46+89.54 24.75' LEFT
172	MONUMENT TYPE "A" SET 2.0' BELOW GROUND (SEE DETAILS ON SHEET 2)	N 735349.34 E 1498772.36	46+89.54 24.75' RIGHT
173	MONUMENT TYPE "B" SET FLUSH (SEE DETAILS ON SHEET 2)	N 735277.18 E 1498312.65	42+24.20 24.75' RIGHT



I certify that this plat is based on information abstracted from documents, parol evidence, and physical evidence. The survey work identified hereon is consistent with this information.

I certify that this plat meets the requirements of 27 VSA Section 1403 and complies with Vermont Board of Land Surveyors Rules, Part 5.4 and 5.5, adopted under 26 VSA Section 2544(a)(9).

Signed: *Stephen C. Fraser*  
Stephen C. Fraser, L.S. #527



**STATUTORY SURVEY**  
**STATE OF VERMONT**  
**VERMONT ROUTE 128**  
ESSEX - WESTFORD  
CHITTENDEN COUNTY, VERMONT

SCALE: 1" = 40'	PLAT COMPILATION DATE: 1-19-2015
R.O.W. WIDTH = 49.5'	PIN #: 12x602 SHEET 9 OF 39

Vermont Survey and Engineering, Inc.  
79 River Street, Montpelier, Vermont  
(802) 229-9138 ~ info@vermontsurvey.com