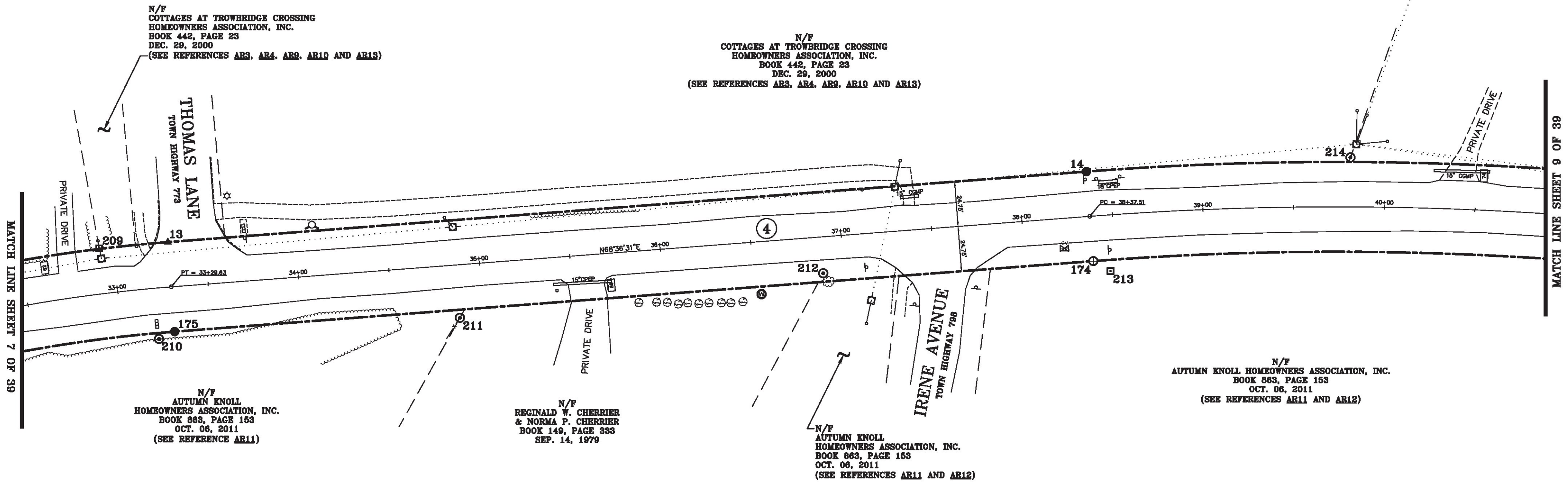


LINE	BEARING	DISTANCE
12-13	SEE CURVE TABLE	
13-14	N 68° 36' 31" E	507.89'
14-15	SEE CURVE TABLE	
173-174	SEE CURVE TABLE	
174-175	S 68° 36' 31" W	507.89'
175-176	SEE CURVE TABLE	

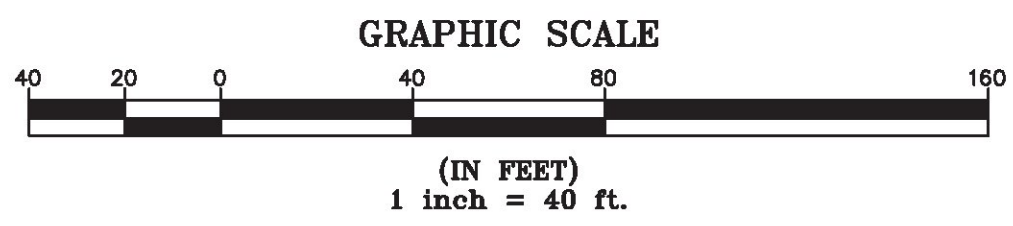
CURVE	CHORD BEARING	CHORD DISTANCE	RADIUS	LENGTH
12-13	N 58° 20' 24" E	301.32'	845.17'	302.94'
14-15	N 74° 50' 37" E	391.30'	1801.39'	392.07'
173-174	S 74° 50' 37" W	380.55'	1751.89'	381.30'
175-176	S 58° 20' 24" W	283.67'	795.67'	285.20'
30+35.56-33+29.63	N 58° 20' 24" E	292.50'	820.42'	294.07'
38+37.51-42+24.20	N 74° 50' 37" E	385.92'	1776.64'	386.69'



ORIGINAL DRAWING-INK ON POLYESTER FILM MEETING THE REQUIREMENTS OF 27 VSA 1403(b)(7)

MATCH LINE SHEET 7 OF 39

MATCH LINE SHEET 9 OF 39



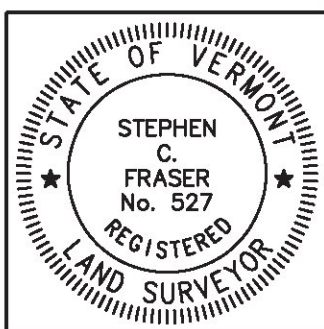
MON. NO.	DESCRIPTION	COORDINATE	STATION
13	UNMONUMENTED POINT	N 735038.53 E 1497454.39	33+29.63 24.75' LEFT
14	MONUMENT TYPE "A" SET 0.8' ABOVE GROUND (SEE DETAILS ON SHEET 2)	N 735223.78 E 1497927.28	38+37.51 24.75' LEFT
174	MONUMENT TYPE "B" SET FLUSH (SEE DETAILS ON SHEET 2)	N 735177.89 E 1497945.34	38+37.51 24.75' RIGHT
175	MONUMENT TYPE "A" SET 0.5' ABOVE GROUND STABLE	N 734992.44 E 1497472.44	33+29.63 24.75' RIGHT
209	4"x4" CONCRETE MONUMENT FOUND 0.9' ABOVE GROUND WITH DRILL HOLE IN CENTER (SEE DETAILS ON SHEET 2)	N 735024.19 E 1497419.19	32+92.74 25.09' LEFT

MON. NO.	DESCRIPTION	COORDINATE	STATION
210	1 1/4" I.D. IRON PIPE FOUND 1.0' ABOVE GROUND - STABLE	N 734986.05 E 1497465.34	33+20.36 28.07' RIGHT
211	1" I.D. IRON PIPE FOUND FLUSH WITH ILLEGIBLE CAP STABLE	N 735045.70 E 1497620.59	34+86.99 29.20' RIGHT
212	1" I.D. IRON PIPE FOUND 0.2' BELOW GROUND - STABLE	N 735127.76 E 1497804.94	36+88.57 20.03' RIGHT
213	4"x4" CONCRETE MONUMENT FOUND FLUSH WITH CAP MARKED "X" - STABLE	N 735175.21 E 1497956.07	38+46.77 30.95' RIGHT
214	1" O.D. IRON PIPE FOUND 1.2' ABOVE GROUND WITH CAP MARKED "PALCO LTD 498" STABLE	N 735273.82 E 1498064.24	39+81.23 27.29' LEFT

I certify that this plat is based on information abstracted from documents, parcel evidence, and physical evidence. The survey work identified hereon is consistent with this information.

I certify that this plat meets the requirements of 27 VSA Section 1403 and complies with Vermont Board of Land Surveyors Rules, Part 5.4 and 5.5, adopted under 26 VSA Section 2544(a)(9).

Signed: *Stephen C. Fraser*
Stephen C. Fraser, L.S. #527



STATUTORY SURVEY
STATE OF VERMONT
VERMONT ROUTE 128
ESSEX - WESTFORD
CHITTENDEN COUNTY, VERMONT

SCALE: 1" = 40'	PLAT COMPILATION DATE: 1-19-2015
R.O.W. WIDTH = 49.5'	PIN #: 12x602 SHEET 8 OF 39

Vermont Survey and Engineering, Inc.
79 River Street, Montpelier, Vermont
(802) 229-9138 ~ info@vermontsurvey.com