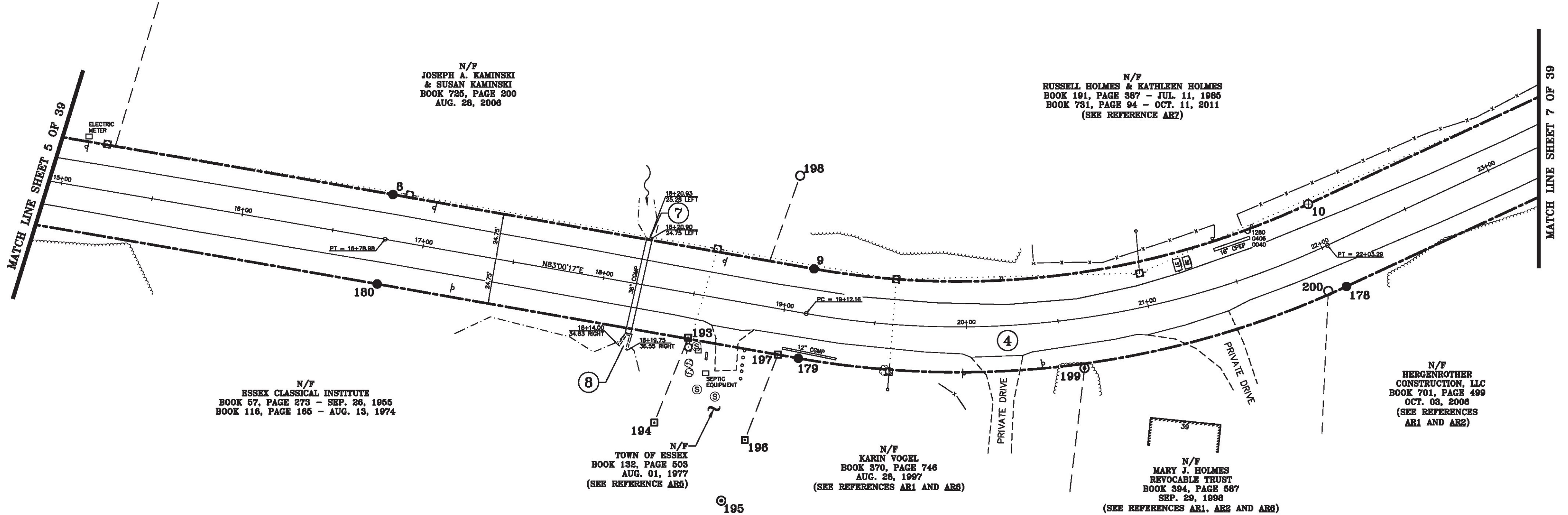
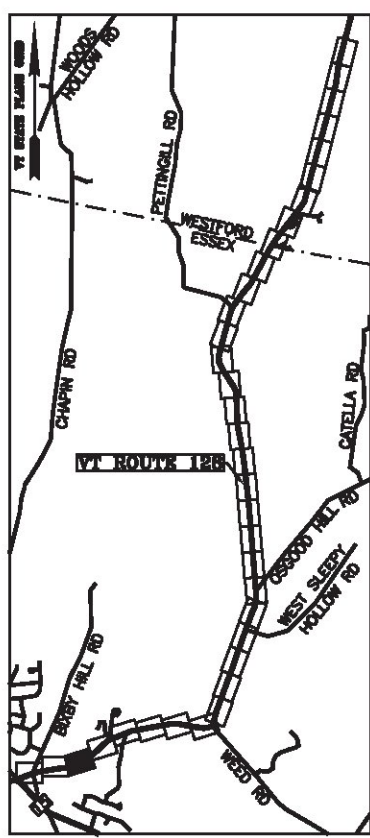


BASIS OF BEARINGS & COORDINATES
 Datum: National - NAD 83 (2011) APC (KMD 17) sPT

LINE	BEARING	DISTANCE
7-8	SEE CURVE TABLE	
8-9	N 83° 00' 17" E	233.17'
9-10	SEE CURVE TABLE	
10-11	N 48° 04' 17" E	416.13'
177-178	S 48° 04' 17" W	416.13'
178-179	SEE CURVE TABLE	
179-180	S 83° 00' 17" W	233.18'
180-181	SEE CURVE TABLE	

CURVE	CHORD BEARING	CHORD DISTANCE	RADIUS	LENGTH
7-8	N 82° 39' 41" E	372.50'	31081.87'	372.50'
9-10	N 65° 32' 17" E	271.79'	452.75'	276.04'
178-179	S 65° 32' 17" W	301.50'	502.25'	306.22'
180-181	S 82° 39' 41" W	371.90'	31032.37'	371.91'
9+34.58-16+78.98	N 82° 19' 05" E	744.39'	31057.12'	744.40'
19+12.16-22+03.29	N 65° 32' 17" E	286.84'	477.50'	291.13'



N/F
 ESSEX CLASSICAL INSTITUTE
 BOOK 57, PAGE 273 - SEP. 28, 1955
 BOOK 116, PAGE 166 - AUG. 13, 1974

N/F
 JOSEPH A. KAMINSKI
 & SUSAN KAMINSKI
 BOOK 725, PAGE 200
 AUG. 28, 2006

N/F
 RUSSELL HOLMES & KATHLEEN HOLMES
 BOOK 191, PAGE 387 - JUL. 11, 1985
 BOOK 731, PAGE 94 - OCT. 11, 2011
 (SEE REFERENCE AR7)

N/F
 TOWN OF ESSEX
 BOOK 132, PAGE 503
 AUG. 01, 1977
 (SEE REFERENCE AR5)

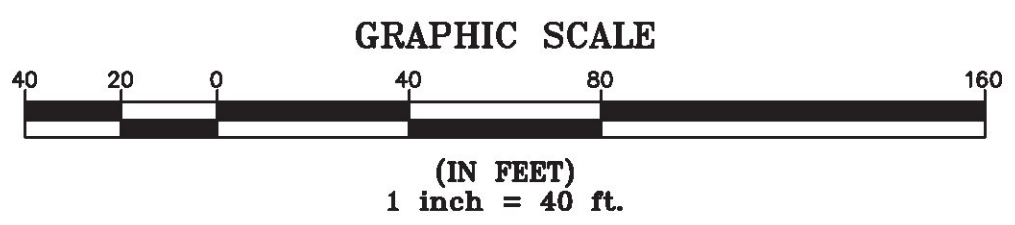
N/F
 KARIN VOGEL
 BOOK 370, PAGE 746
 AUG. 28, 1997
 (SEE REFERENCES AR1 AND AR6)

N/F
 MARY J. HOLMES
 REVOCABLE TRUST
 BOOK 594, PAGE 587
 SEP. 29, 1998
 (SEE REFERENCES AR1, AR2 AND AR6)

N/F
 HERGENROTHER
 CONSTRUCTION, LLC
 BOOK 701, PAGE 499
 OCT. 03, 2006
 (SEE REFERENCES
 AR1 AND AR2)

MON. NO.	DESCRIPTION	COORDINATE	STATION
8	MONUMENT TYPE "A" SET FLUSH (SEE DETAILS ON SHEET 2)	N 734183.31 E 1496099.89	16+78.98 24.75' LEFT
9	MONUMENT TYPE "A" SET FLUSH (SEE DETAILS ON SHEET 2)	N 734211.71 E 1496331.33	19+12.16 24.75' LEFT
10	MONUMENT TYPE "B" SET FLUSH (SEE DETAILS ON SHEET 2)	N 734324.25 E 1496578.72	22+03.29 24.75' LEFT
178	MONUMENT TYPE "A" SET FLUSH (SEE DETAILS ON SHEET 2)	N 734287.42 E 1496611.79	22+03.29 24.75' RIGHT
179	MONUMENT TYPE "A" SET FLUSH (SEE DETAILS ON SHEET 2)	N 734162.58 E 1496337.35	19+12.16 24.75' RIGHT
180	MONUMENT TYPE "A" SET FLUSH (SEE DETAILS ON SHEET 2)	N 734134.18 E 1496105.92	16+78.98 24.75' RIGHT
193	4"x4" CONCRETE MONUMENT FOUND FLUSH WITH DRILL HOLE IN CENTER - STABLE	N 734155.70 E 1496276.69	18+51.10 24.19' RIGHT
194	4"x4" CONCRETE MONUMENT FOUND 2.0' ABOVE GROUND WITH DRILL HOLE IN CENTER STABLE	N 734106.07 E 1496272.50	18+40.90 72.94' RIGHT
195	1" I.D. IRON PIPE FOUND 0.5' ABOVE GROUND - STABLE	N 734076.04 E 1496319.87	18+84.26 108.51' RIGHT
196	4"x4" CONCRETE MONUMENT FOUND FLUSH WITH DRILL HOLE IN CENTER - STABLE	N 734111.45 E 1496322.52	18+91.21 73.69' RIGHT

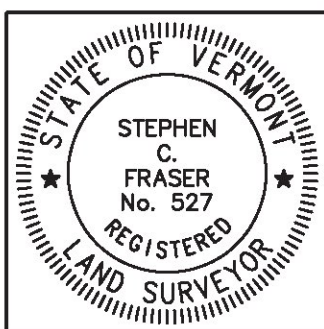
MON. NO.	DESCRIPTION	COORDINATE	STATION
197	4"x4" CONCRETE MONUMENT FOUND 0.5' BELOW GROUND WITH DRILL HOLE IN CENTER STABLE	N 734161.33 E 1496326.16	19+00.89 24.62' RIGHT
198	5/8" DIA. IRON ROD FOUND 2.0' ABOVE GROUND WITH CAP MARKED "TREY PLS 219" BENT & STABLE	N 734258.09 E 1496309.24	18+95.88 73.48' LEFT
199	1" O.D. IRON PIPE FOUND 0.5' ABOVE GROUND WITH CAP MARKED "PALCO LTD LS 498" STABLE	N 734203.09 E 1496488.20	20+60.88 27.19' RIGHT
200	5/8" DIA. IRON ROD FOUND 0.1' BELOW GROUND WITH CAP MARKED "PROPERTY CORNER LS 639" - STABLE	N 734282.18 E 1496603.02	21+93.71 22.89' RIGHT



I certify that this plat is based on information abstracted from documents, parcel evidence, and physical evidence. The survey work identified hereon is consistent with this information.

I certify that this plat meets the requirements of 27 VSA Section 1403 and complies with Vermont Board of Land Surveyors Rules, Part 5.4 and 5.5, adopted under 26 VSA Section 2544(a)(9).

Signed: *Stephen C. Fraser*
 Stephen C. Fraser, L.S. #527



STATUTORY SURVEY
STATE OF VERMONT
VERMONT ROUTE 128
 ESSEX - WESTFORD
 CHITTENDEN COUNTY, VERMONT

SCALE: 1"= 40'	PLAT COMPILATION DATE: 1-19-2015
R.O.W. WIDTH = 49.5'	PIN #: 12x602 SHEET 6 OF 39

Vermont Survey and Engineering, Inc.
 79 River Street, Montpelier, Vermont
 (802) 229-9138 ~ info@vermontsurvey.com

ORIGINAL DRAWING-INK ON POLYESTER FILM MEETING THE REQUIREMENTS OF 27 VSA 1403(b)(7)