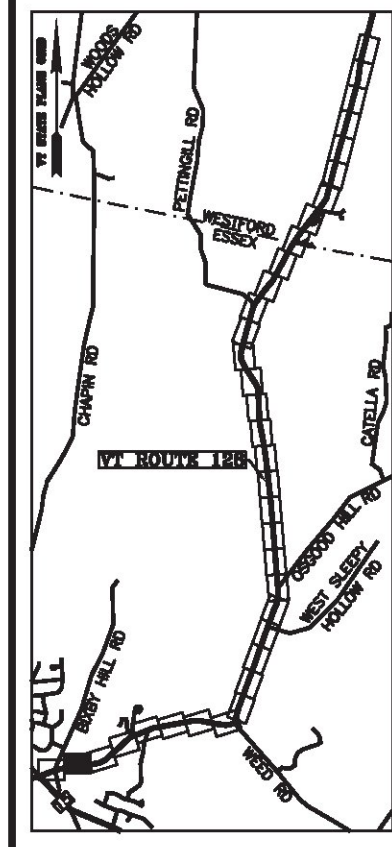
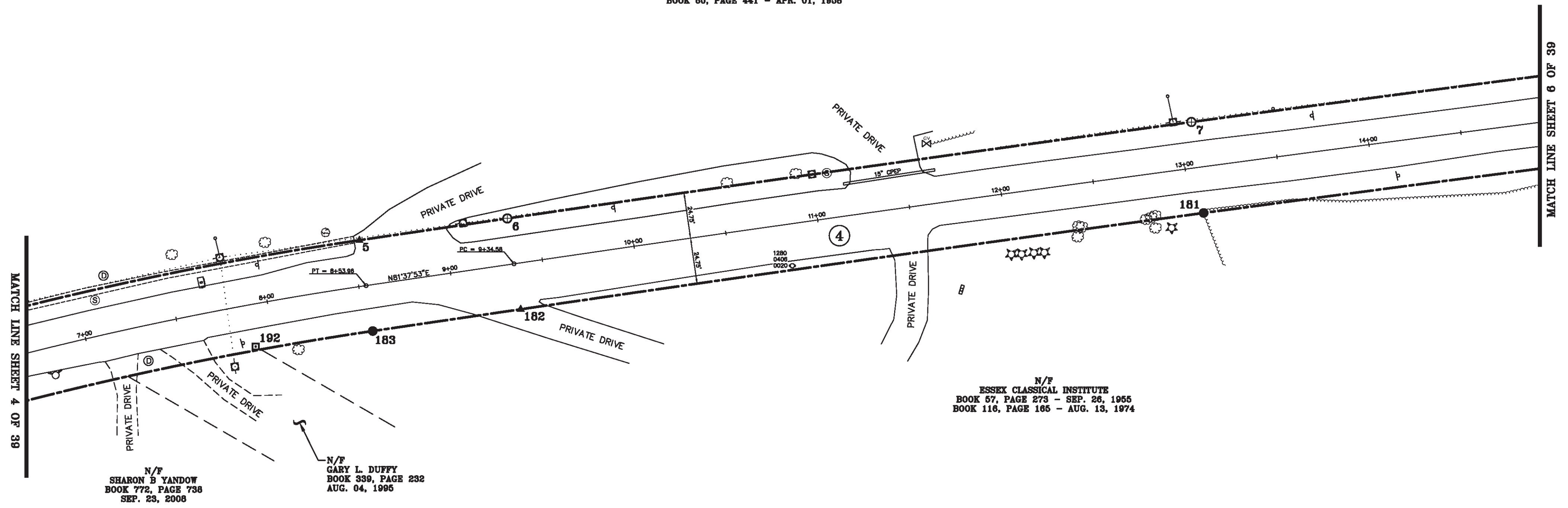


LINE	BEARING	DISTANCE
4-5	SEE CURVE TABLE	
5-6	N 81° 37' 53" E	80.62'
6-7	SEE CURVE TABLE	
7-8	SEE CURVE TABLE	
180-181	SEE CURVE TABLE	
181-182	SEE CURVE TABLE	
182-183	S 81° 37' 53" W	80.62'
183-184	SEE CURVE TABLE	

CURVE	CHORD BEARING	CHORD DISTANCE	RADIUS	LENGTH
4-5	N 76° 29' 27" E	335.47'	1872.04'	335.92'
6-7	N 81° 58' 29" E	372.50'	31081.87'	372.50'
7-8	N 82° 39' 41" E	372.50'	31081.87'	372.50'
180-181	S 82° 39' 41" W	371.90'	31032.37'	371.91'
181-182	S 81° 58' 29" W	371.90'	31032.37'	371.91'
183-184	S 76° 29' 27" W	326.60'	1822.54'	327.04'
5+22.48-8+53.96	N 76° 29' 27" E	331.03'	1847.29'	331.48'
9+34.58-16+78.98	N 82° 19' 05" E	744.39'	31057.12'	744.40'



N/F
 ESSEX TOWN SCHOOL DISTRICT
 BOOK 181, PAGE 250 - MAY 18, 1984
 BOOK 106, PAGE 39 - JUL 20, 1972
 BOOK 72, PAGE 77 - NOV. 30, 1965
 BOOK 60, PAGE 441 - APR. 01, 1958



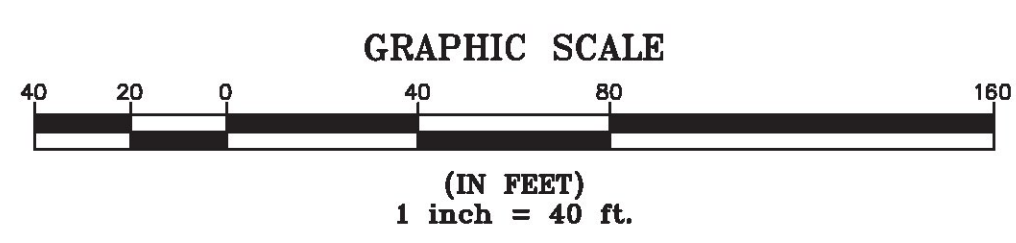
N/F
 ESSEX CLASSICAL INSTITUTE
 BOOK 57, PAGE 273 - SEP. 26, 1955
 BOOK 116, PAGE 165 - AUG. 13, 1974

N/F
 SHARON B YANDOW
 BOOK 772, PAGE 738
 SEP. 23, 2008

N/F
 GARY L. DUFFY
 BOOK 339, PAGE 232
 AUG. 04, 1995

ORIGINAL DRAWING-INK ON POLYESTER FILM MEETING THE REQUIREMENTS OF 27 VSA 1403(b)(7)

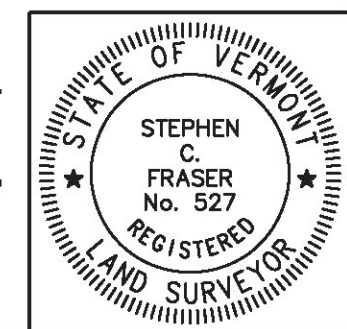
MON. NO.	DESCRIPTION	COORDINATE	STATION
5	UNMONUMENTED POINT	N 734071.99 E 1495281.83	8+53.96 24.75' LEFT
6	MONUMENT TYPE "B" SET FLUSH (SEE DETAILS ON SHEET 2)	N 734083.72 E 1495361.58	9+34.58 24.75' LEFT
7	MONUMENT TYPE "B" SET FLUSH (SEE DETAILS ON SHEET 2)	N 734135.73 E 1495730.44	13+06.78 24.75' LEFT
181	MONUMENT TYPE "A" SET 0.5' ABOVE GROUND (SEE DETAILS ON SHEET 2)	N 734086.67 E 1495737.06	13+06.78 24.75' RIGHT
182	UNMONUMENTED POINT	N 734034.75 E 1495368.80	9+34.58 24.75' RIGHT
183	MONUMENT TYPE "A" SET FLUSH (SEE DETAILS ON SHEET 2)	N 734023.02 E 1495289.03	8+53.96 24.75' RIGHT
192	4"x4" CONCRETE MONUMENT FOUND 0.5' BELOW GROUND WITH DRILL HOLE IN CENTER STABLE	N 734014.67 E 1495225.92	7+89.49 22.71' RIGHT



I certify that this plat is based on information abstracted from documents, parol evidence, and physical evidence. The survey work identified hereon is consistent with this information.

I certify that this plat meets the requirements of 27 VSA Section 1403 and complies with Vermont Board of Land Surveyors Rules, Part 5.4 and 5.5, adopted under 26 VSA Section 2544(a)(9).

Signed: *Stephen C. Fraser*
 Stephen C. Fraser, L.S. #527



STATUTORY SURVEY
 STATE OF VERMONT
 VERMONT ROUTE 128
 ESSEX - WESTFORD
 CHITTENDEN COUNTY, VERMONT

SCALE: 1" = 40'	PLAT COMPILATION DATE: 1-19-2015
R.O.W. WIDTH = 49.5'	PIN #: 12x602 SHEET 5 OF 39

Vermont Survey and Engineering, Inc.
 79 River Street, Montpelier, Vermont
 (802) 229-9138 ~ info@vermontsurvey.com