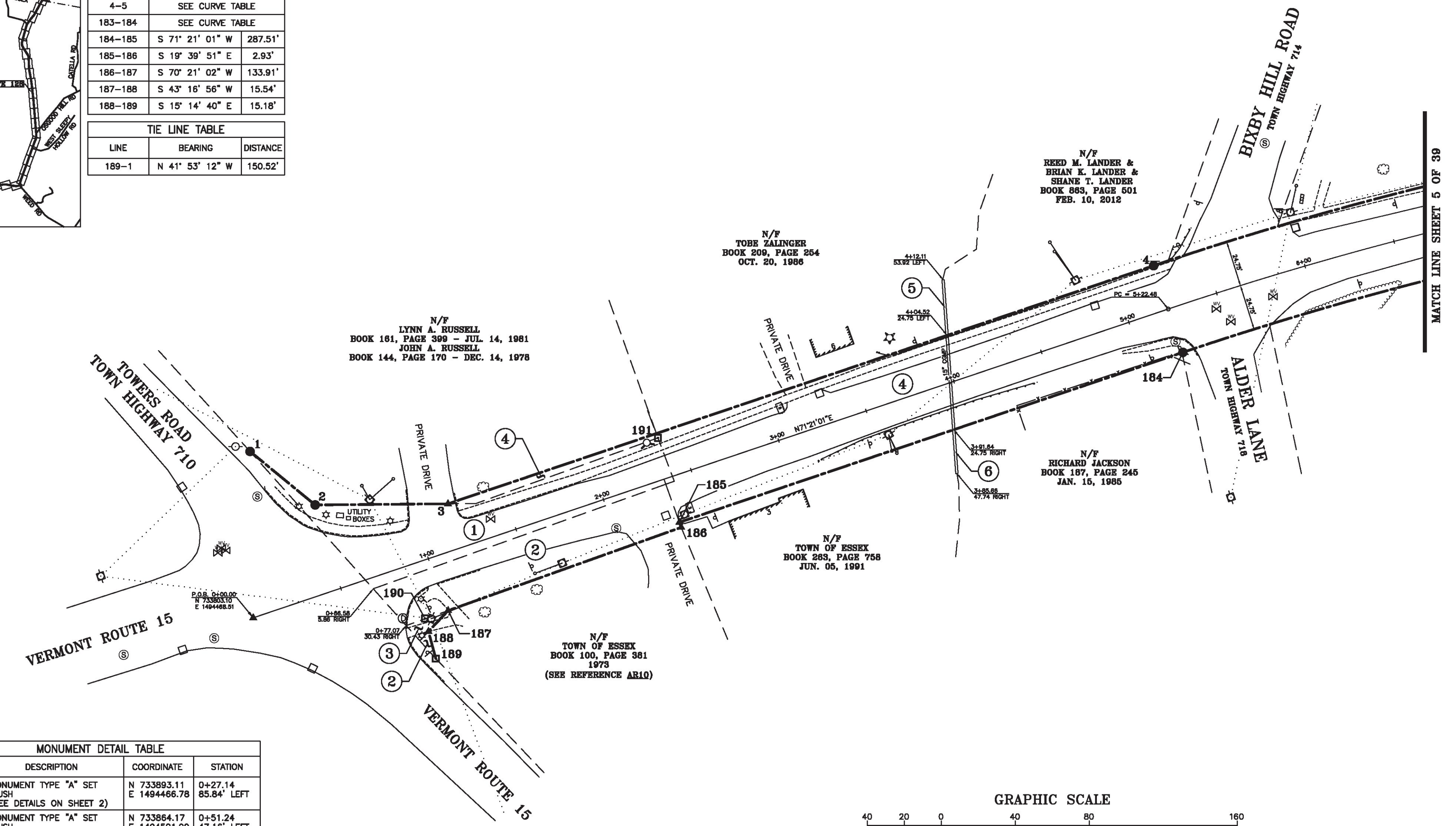
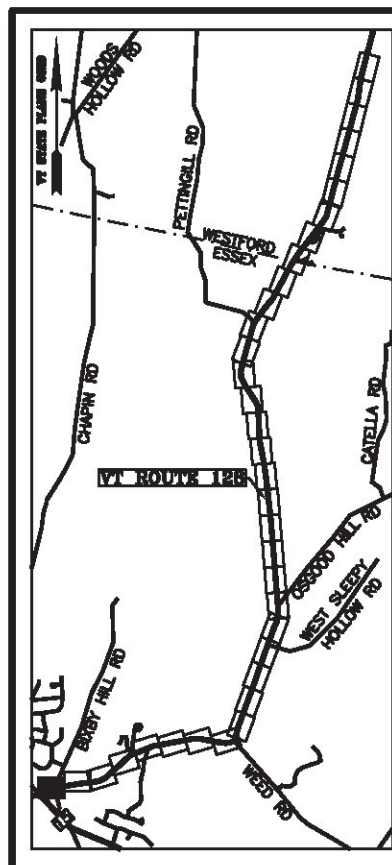


RIGHT OF WAY LIMIT LINE TABLE		
LINE	BEARING	DISTANCE
1-2	S 50° 34' 49" E	45.57'
2-3	N 89° 31' 01" E	71.89'
3-4	N 71° 21' 01" E	402.93'
4-5	SEE CURVE TABLE	
183-184	SEE CURVE TABLE	
184-185	S 71° 21' 01" W	287.51'
185-186	S 19° 39' 51" E	2.93'
186-187	S 70° 21' 02" W	133.91'
187-188	S 43° 16' 56" W	15.54'
188-189	S 15° 14' 40" E	15.18'

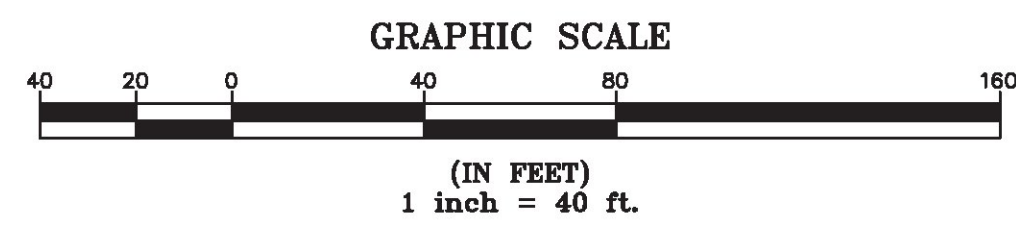
  

TIE LINE TABLE		
LINE	BEARING	DISTANCE
189-1	N 41° 53' 12" W	150.52'

CURVE TABLE				
CURVE	CHORD BEARING	CHORD DISTANCE	RADIUS	LENGTH
4-5	N 76° 29' 27" E	335.47'	1872.04'	335.92'
183-184	S 76° 29' 27" W	326.60'	1822.54'	327.04'
5+22.48-8+53.96	N 76° 29' 27" E	331.03'	1847.29'	331.48'



MONUMENT DETAIL TABLE			
MON. NO.	DESCRIPTION	COORDINATE	STATION
1	MONUMENT TYPE "A" SET FLUSH (SEE DETAILS ON SHEET 2)	N 733893.11 E 1494466.78	0+27.14 85.84' LEFT
2	MONUMENT TYPE "A" SET FLUSH (SEE DETAILS ON SHEET 2)	N 733864.17 E 1494501.99	0+51.24 47.16' LEFT
3	UNMONUMENTED POINT	N 733864.78 E 1494573.87	1+19.55 24.75' LEFT
4	MONUMENT TYPE "A" SET FLUSH (SEE DETAILS ON SHEET 2)	N 733993.63 E 1494955.64	5+22.48 24.75' LEFT
184	MONUMENT TYPE "A" SET FLUSH (SEE DETAILS ON SHEET 2)	N 733946.73 E 1494971.47	5+22.48 24.75' RIGHT
185	UNMONUMENTED POINT	N 733854.79 E 1494699.06	2+34.97 24.75' RIGHT
186	UNMONUMENTED POINT	N 733852.03 E 1494700.05	2+35.03 27.68' RIGHT
187	UNMONUMENTED POINT	N 733807.00 E 1494573.94	1+01.14 30.01' RIGHT
188	UNMONUMENTED POINT	N 733795.69 E 1494563.29	0+87.43 37.32' RIGHT
189	4"x4" CONCRETE MONUMENT FOUND 1.8" BELOW GROUND WITH DRILL HOLE IN CENTER STABLE	N 733781.05 E 1494567.28	0+86.53 52.47' RIGHT
190	4"x4" CONCRETE MONUMENT FOUND 1.1" BELOW GROUND WITH DRILL HOLE IN CENTER STABLE	N 733802.71 E 1494561.38	0+87.86 30.07' RIGHT
191	4"x4" CONCRETE MONUMENT FOUND 2.0" ABOVE GROUND WITH DRILL HOLE IN CENTER STABLE	N 733900.46 E 1494687.45	2+38.58 22.23' LEFT

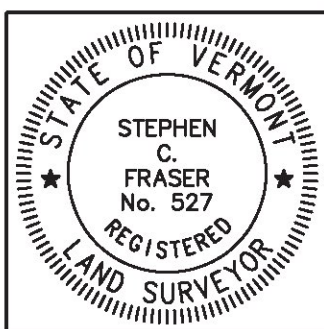


ORIGINAL DRAWING-INK ON POLYESTER FILM MEETING THE REQUIREMENTS OF 27 VSA 1403(b)(7)

I certify that this plat is based on information abstracted from documents, parcel evidence, and physical evidence. The survey work identified hereon is consistent with this information.

I certify that this plat meets the requirements of 27 VSA Section 1403 and complies with Vermont Board of Land Surveyors Rules, Part 5.4 and 5.5, adopted under 26 VSA Section 2544(a)(9).

Signed: *Stephen C. Fraser*  
 Stephen C. Fraser, L.S. #527



**STATUTORY SURVEY**  
**STATE OF VERMONT**  
**VERMONT ROUTE 128**  
 ESSEX - WESTFORD  
 CHITTENDEN COUNTY, VERMONT

SCALE: 1" = 40'	PLAT COMPILATION DATE: 1-19-2015
R.O.W. WIDTH = VARIES	PIN #: 12x602
SHEET 4 OF 39	

Vermont Survey and Engineering, Inc.  
 79 River Street, Montpelier, Vermont  
 (802) 229-9138 ~ info@vermontsurvey.com