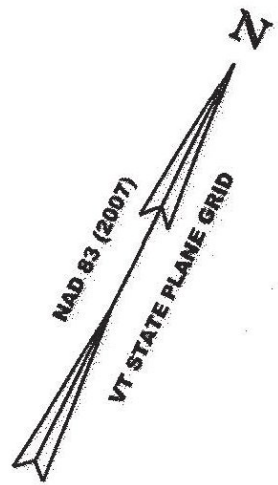
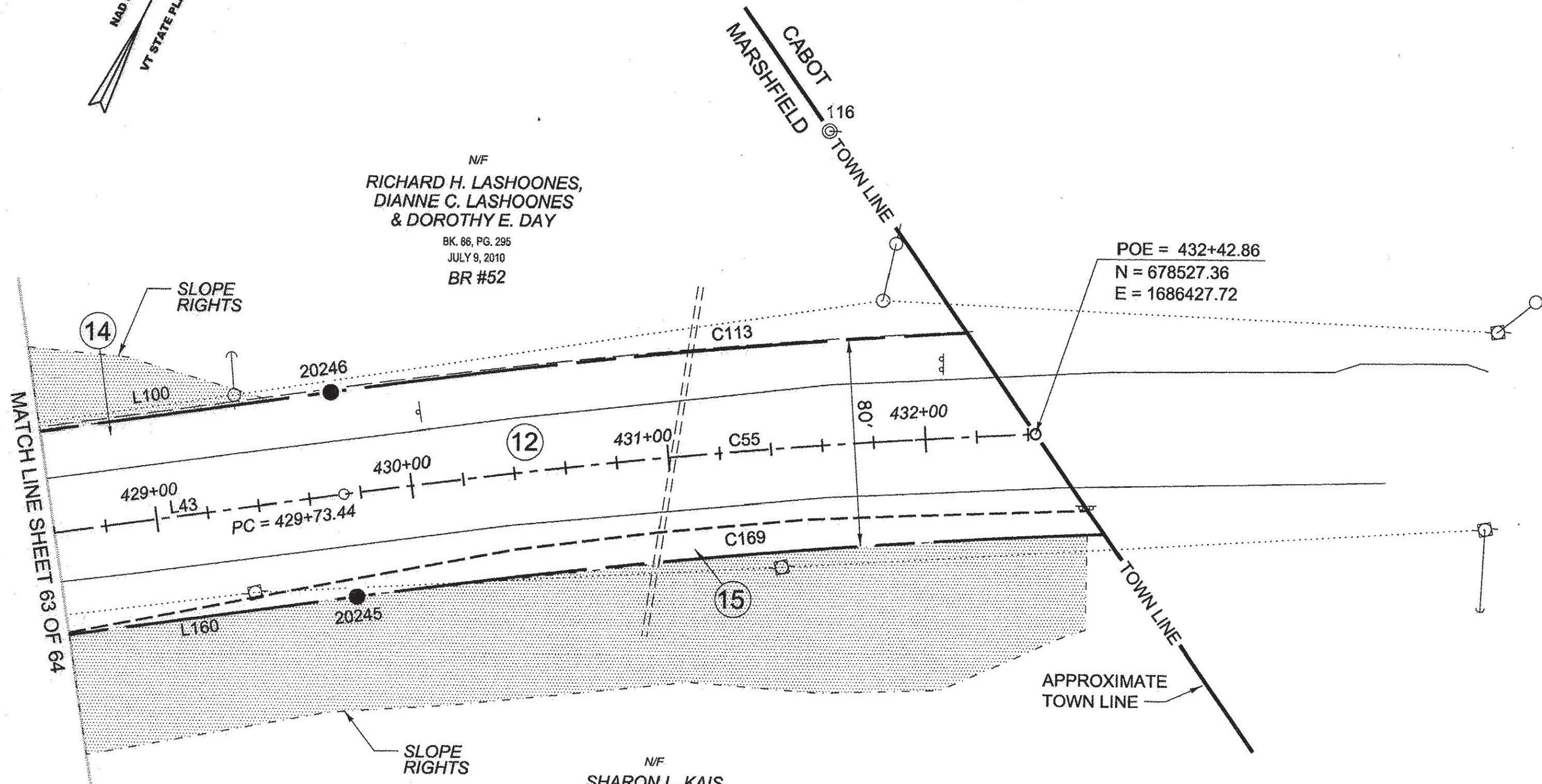


ORIGINAL DRAWING - INK ON POLYESTER FILM MEETING THE REQUIREMENTS OF 27 V.S.A. § 1403

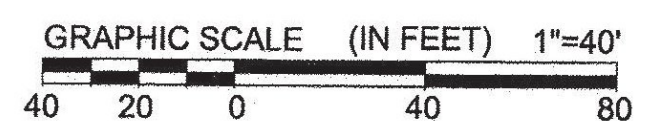


N/F
RICHARD H. LASHOONES,
DIANNE C. LASHOONES
& DOROTHY E. DAY
BK. 86, PG. 295
JULY 9, 2010
BR #52

N/F
SHARON L. KAIS
BK. 71, PG. 474
JUNE 08, 2005
BR #54



MATCH LINE SHEET 63 OF 64

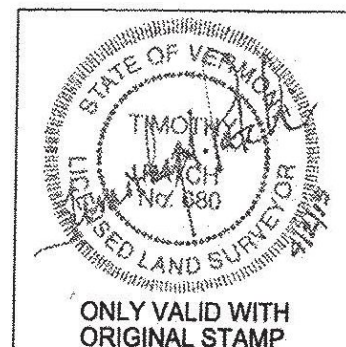



LEGEND:
SEE SHEET 1 OF 64
NOTES:
SEE SHEETS 2 & 3 OF 64
MONUMENT TABLE:
SEE SHEETS 6, 7, 8 OF 64
ROW CENTER LINE TABLE:
SEE SHEET 8 OF 64
ROW LIMIT LINE & CURVE TABLES:
SEE SHEET 9 OF 64

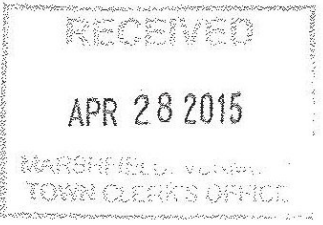
I CERTIFY THAT THIS PLAT IS BASED ON INFORMATION ABSTRACTED FROM DOCUMENTS, PAROL EVIDENCE, AND PHYSICAL EVIDENCE. THE SURVEY WORK IDENTIFIED HEREON IS CONSISTENT WITH THIS INFORMATION.

I CERTIFY THAT THIS PLAT MEETS THE REQUIREMENTS OF 27 VSA SECTION 1403 AND COMPLIES WITH VERMONT BOARD OF LAND SURVEYORS RULES, PART 5.4 AND 5.5 ADOPTED UNDER 26 VSA SECTION 2544(A).

SIGNED: *Timothy A. Patch*
TIMOTHY A. PATCH, L.S. 680



STATE OF VERMONT AGENCY OF TRANSPORTATION		SURVEYED: SGC ENGINEERING
		REVIEWED: TAP
		DATE: 04/01/2015
		SCALE: 1"=40'
STATUTORY SURVEY TOWN OF MARSHFIELD VERMONT US ROUTE 2		FILE: 272x600ROW.DGN
APPROXIMATELY FROM PLAINFIELD TOWN LINE TO CABOT TOWN LINE		SHEET NO. 64 OF 64



PIN ID # 12X600