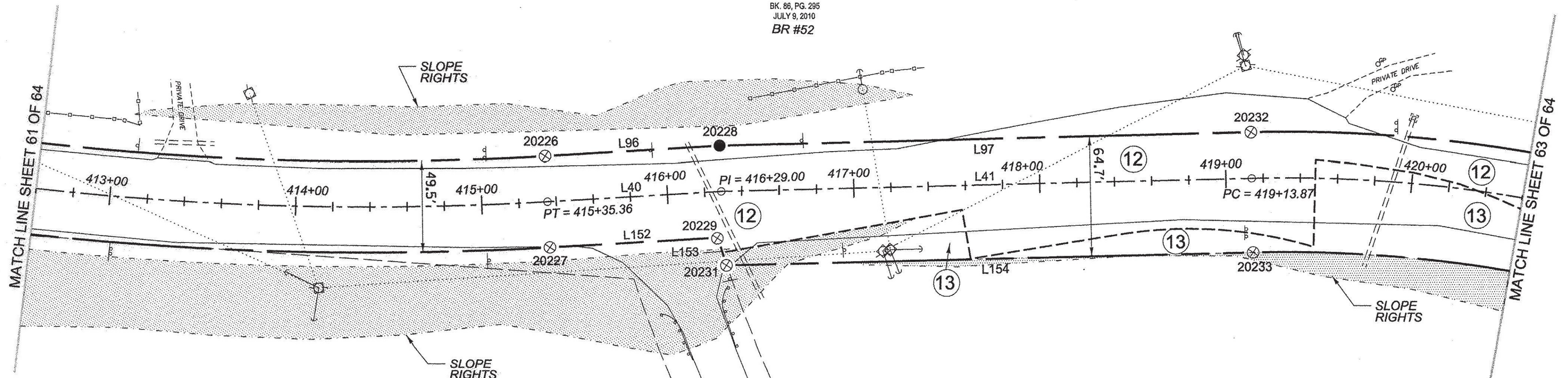


N/F  
 RICHARD H. LASHOONES,  
 DIANNE C. LASHOONES  
 & DOROTHY E. DAY  
 BK. 86, PG. 295  
 JULY 9, 2010  
 BR #52

N/F  
 RICHARD A. DIMATTEO  
 & VINCENT G. DIMATTEO  
 BK. 74, PG. 134  
 FEB. 20, 2006  
 BR #54

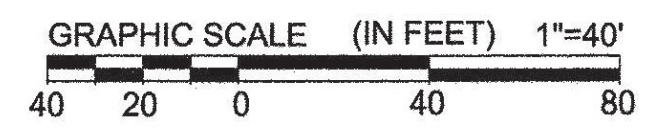
N/F  
 RICHARD H. LASHOONES,  
 DIANNE C. LASHOONES  
 & DOROTHY E. DAY  
 BK. 86, PG. 295  
 JULY 9, 2010  
 BR #52

VT ROUTE 232  
 VOLUME 1, PAGE 81A, MARCH 8, 1920  
 VOLUME 7, PAGE 226, SET NUMBER 139, 1987  
 NO PRESCRIBED WIDTH



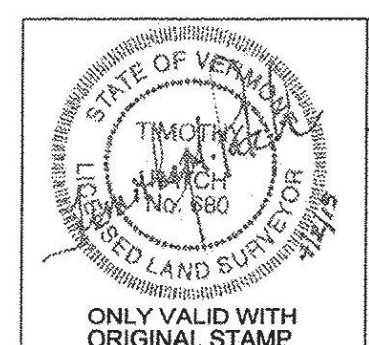
MATCH LINE SHEET 61 OF 64

MATCH LINE SHEET 63 OF 64

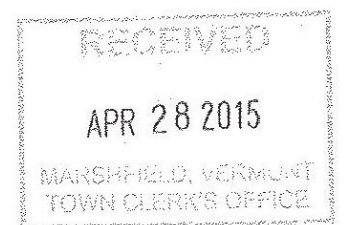


**LEGEND:**  
 SEE SHEET 1 OF 64  
**NOTES:**  
 SEE SHEETS 2 & 3 OF 64  
**MONUMENT TABLE:**  
 SEE SHEETS 6,7,8 OF 64  
**ROW CENTER LINE TABLE:**  
 SEE SHEET 8 OF 64  
**ROW LIMIT LINE & CURVE TABLES:**  
 SEE SHEET 9 OF 64

I CERTIFY THAT THIS PLAT IS BASED ON INFORMATION ABSTRACTED FROM DOCUMENTS, PAROL EVIDENCE, AND PHYSICAL EVIDENCE. THE SURVEY WORK IDENTIFIED HEREON IS CONSISTENT WITH THIS INFORMATION.  
 I CERTIFY THAT THIS PLAT MEETS THE REQUIREMENTS OF 27 VSA SECTION 1403 AND COMPLIES WITH VERMONT BOARD OF LAND SURVEYORS RULES, PART 5.4 AND 5.5 ADOPTED UNDER 26 VSA SECTION 2544(A).  
 SIGNED: *Timothy A. Patch*  
 TIMOTHY A. PATCH, L.S. 680



<b>STATE OF VERMONT AGENCY OF TRANSPORTATION</b>		SURVEYED: SGC ENGINEERING REVIEWED: TAP
<b>STATUTORY SURVEY</b>		DATE: 04/01/2015
TOWN OF MARSHFIELD		SCALE: 1"=40'
<b>VERMONT US ROUTE 2</b>		FILE: 212x600ROW.DGN
APPROXIMATELY FROM PLAINFIELD TOWN LINE TO CABOT TOWN LINE		SHEET NO. 62 OF 64



ORIGINAL DRAWING - INK ON POLYESTER FILM MEETING THE REQUIREMENTS OF 27 V.S.A. § 1403  
 PIN ID # 12X800