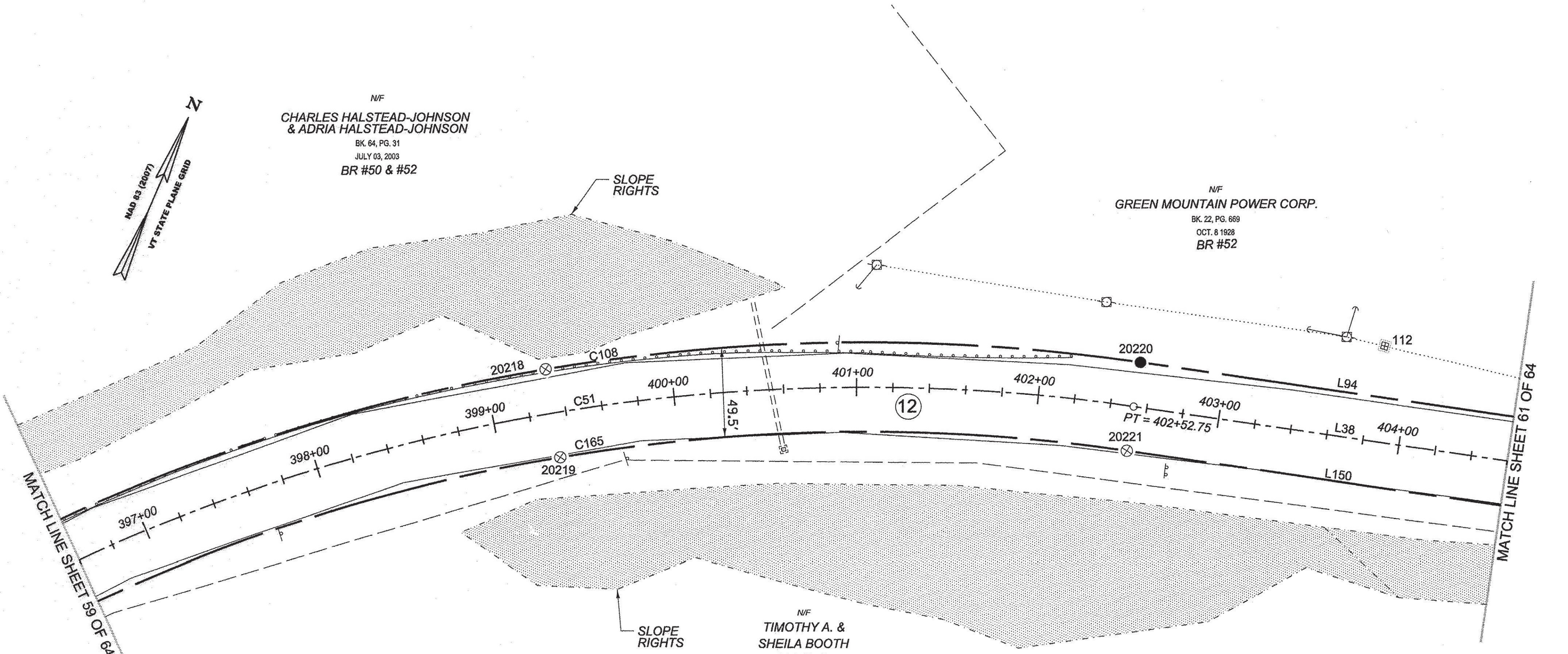


N/F  
 CHARLES HALSTEAD-JOHNSON  
 & ADRIA HALSTEAD-JOHNSON  
 BK. 64, PG. 31  
 JULY 03, 2003  
 BR #50 & #52

N/F  
 GREEN MOUNTAIN POWER CORP.  
 BK. 22, PG. 669  
 OCT. 8 1928  
 BR #52

N/F  
 TIMOTHY A. &  
 SHEILA BOOTH  
 BK. 51, PG. 359  
 OCT. 21, 1998  
 BR #51



MATCH LINE SHEET 59 OF 64

MATCH LINE SHEET 61 OF 64

ORIGINAL DRAWING - INK ON POLYESTER FILM MEETING THE REQUIREMENTS OF 27 V.S.A. § 1403

PIN ID # 12X600

RECEIVED  
 APR 28 2015  
 MARSHFIELD, VERMONT  
 TOWN CLERK'S OFFICE

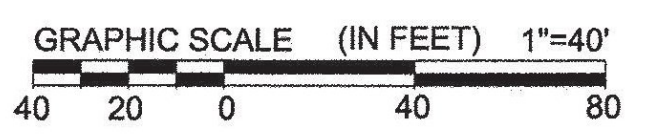
**LEGEND:**  
 SEE SHEET 1 OF 64

**NOTES:**  
 SEE SHEETS 2 & 3 OF 64

**MONUMENT TABLE:**  
 SEE SHEETS 6,7,8 OF 64

**ROW CENTER LINE TABLE:**  
 SEE SHEET 8 OF 64

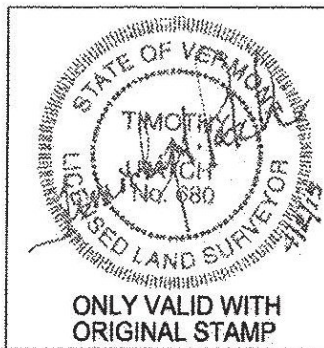
**ROW LIMIT LINE & CURVE TABLES:**  
 SEE SHEET 9 OF 64



I CERTIFY THAT THIS PLAT IS BASED ON INFORMATION ABSTRACTED FROM DOCUMENTS, PAROL EVIDENCE, AND PHYSICAL EVIDENCE. THE SURVEY WORK IDENTIFIED HEREON IS CONSISTENT WITH THIS INFORMATION.

I CERTIFY THAT THIS PLAT MEETS THE REQUIREMENTS OF 27 VSA SECTION 1403 AND COMPLIES WITH VERMONT BOARD OF LAND SURVEYORS RULES, PART 5.4 AND 5.5 ADOPTED UNDER 26 VSA SECTION 2544(A).

SIGNED: *Timothy A. Patch*  
 TIMOTHY A. PATCH, L.S. 680



|  |  |   |
|--|--|---|
| <b>STATE OF VERMONT</b><br><b>AGENCY OF TRANSPORTATION</b> |  | SURVEYED:<br>SGC<br>ENGINEERING<br>REVIEWED:<br>TAP   |
|  |  | DATE:<br>04/01/2015<br>SCALE:<br>1"=40'<br>FILE:<br>z12x600ROW.DGN  |
|  |  | <b>STATUTORY SURVEY</b><br>TOWN OF MARSHFIELD<br><b>VERMONT US ROUTE 2</b><br>APPROXIMATELY FROM PLAINFIELD<br>TOWN LINE TO CABOT TOWN LINE |
|  |  | SHEET NO.<br>60 OF 64   |