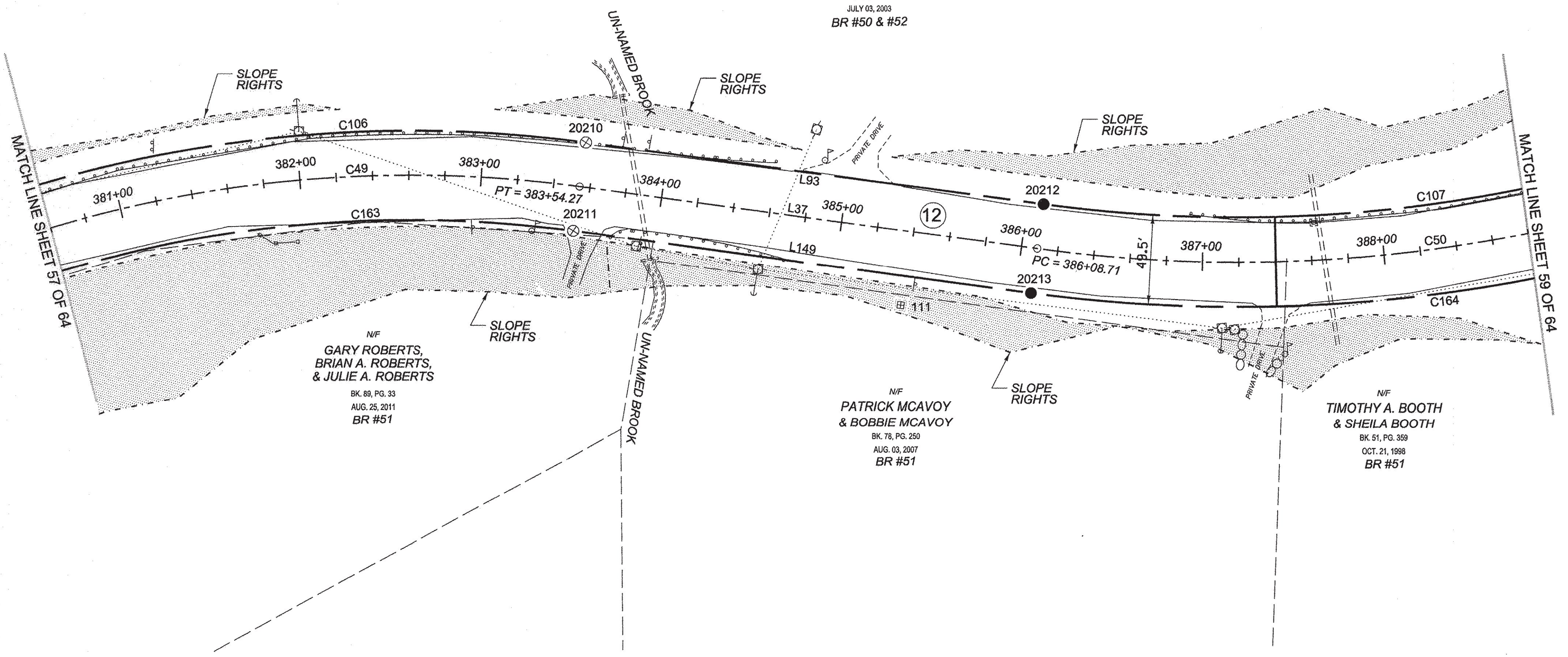


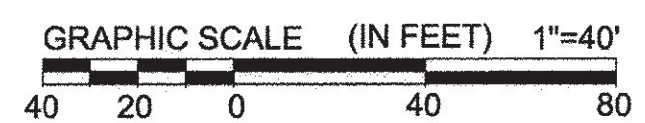
N/F  
**CHARLES HALSTEAD-JOHNSON  
 & ADRIA HALSTEAD-JOHNSON**  
 BK. 64, PG. 31  
 JULY 03, 2003  
 BR #50 & #52



N/F  
**GARY ROBERTS,  
 BRIAN A. ROBERTS,  
 & JULIE A. ROBERTS**  
 BK. 89, PG. 33  
 AUG. 25, 2011  
 BR #51

N/F  
**PATRICK MCAVOY  
 & BOBBIE MCAVOY**  
 BK. 78, PG. 250  
 AUG. 03, 2007  
 BR #51

N/F  
**TIMOTHY A. BOOTH  
 & SHEILA BOOTH**  
 BK. 51, PG. 359  
 OCT. 21, 1998  
 BR #51



LEGEND:  
 SEE SHEET 1 OF 64

NOTES:  
 SEE SHEETS 2 & 3 OF 64

MONUMENT TABLE:  
 SEE SHEETS 6,7,8 OF 64

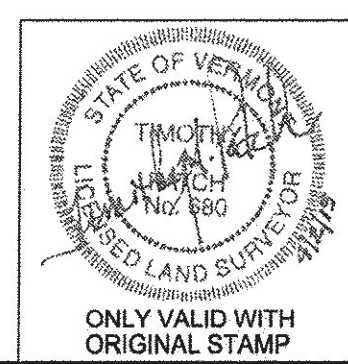
ROW CENTER LINE TABLE:  
 SEE SHEET 8 OF 64

ROW LIMIT LINE & CURVE TABLES:  
 SEE SHEET 9 OF 64

I CERTIFY THAT THIS PLAT IS BASED ON INFORMATION ABSTRACTED FROM DOCUMENTS, PAROL EVIDENCE, AND PHYSICAL EVIDENCE. THE SURVEY WORK IDENTIFIED HEREON IS CONSISTENT WITH THIS INFORMATION.

I CERTIFY THAT THIS PLAT MEETS THE REQUIREMENTS OF 27 VSA SECTION 1403 AND COMPLIES WITH VERMONT BOARD OF LAND SURVEYORS RULES, PART 5.4 AND 5.5 ADOPTED UNDER 26 VSA SECTION 2544(A).

SIGNED: *Timothy A. Patch*  
 TIMOTHY A. PATCH, L.S. 680



<b>STATE OF VERMONT AGENCY OF TRANSPORTATION</b>		SURVEYED: SGC ENGINEERING REVIEWED: TAP
<b>STATUTORY SURVEY</b>		DATE: 04/01/2015
TOWN OF MARSHFIELD		SCALE: 1"=40'
<b>VERMONT US ROUTE 2</b>		FILE: 212680ROW.DGN
APPROXIMATELY FROM PLAINFIELD TOWN LINE TO CABOT TOWN LINE		SHEET NO. 58 OF 64

ORIGINAL DRAWING - INK ON POLYESTER FILM MEETING THE REQUIREMENTS OF 27 V.S.A. § 1403

PIN ID # 12X600

