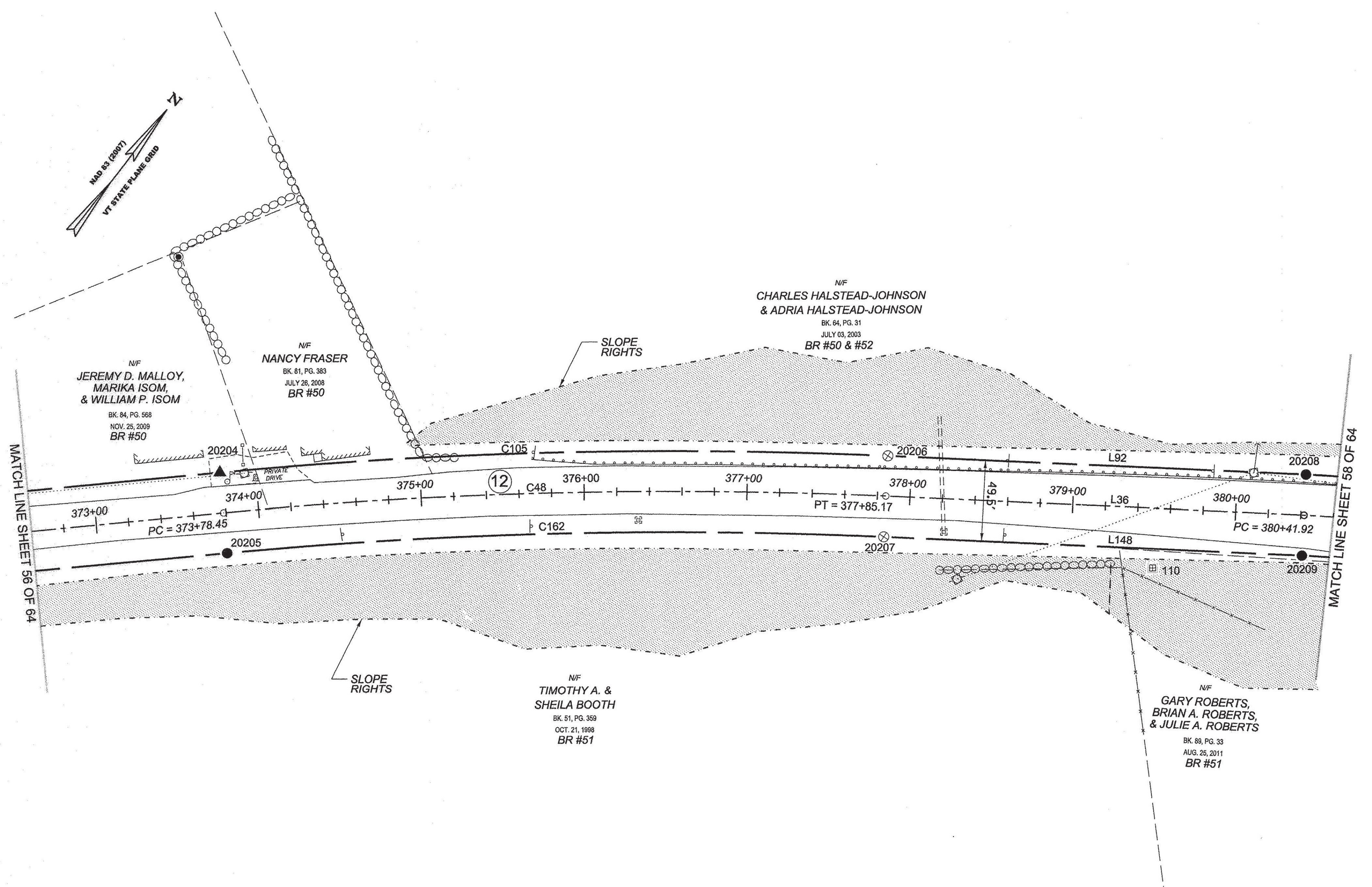
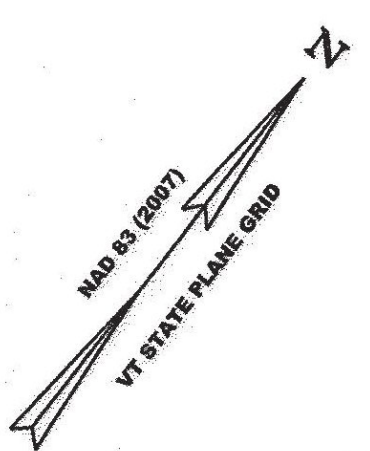


ORIGINAL DRAWING - INK ON POLYESTER FILM MEETING THE REQUIREMENTS OF 27 V.S.A. § 1403

PIN ID # 12X800

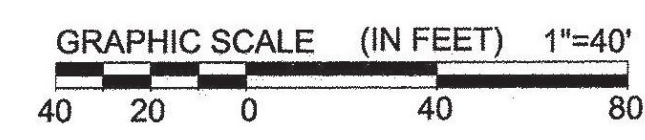


MATCH LINE SHEET 56 OF 64

MATCH LINE SHEET 58 OF 64

RECEIVED
APR 28 2015
MARSHFIELD, VERMONT
TOWN CLERK'S OFFICE

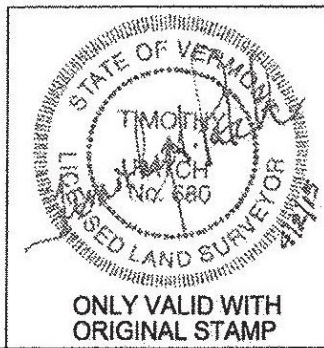
LEGEND:
SEE SHEET 1 OF 64
NOTES:
SEE SHEETS 2 & 3 OF 64
MONUMENT TABLE:
SEE SHEETS 6,7,8 OF 64
ROW CENTER LINE TABLE:
SEE SHEET 8 OF 64
ROW LIMIT LINE & CURVE TABLES:
SEE SHEET 9 OF 64



I CERTIFY THAT THIS PLAT IS BASED ON INFORMATION ABSTRACTED FROM DOCUMENTS, PAROL EVIDENCE, AND PHYSICAL EVIDENCE. THE SURVEY WORK IDENTIFIED HEREON IS CONSISTENT WITH THIS INFORMATION.

I CERTIFY THAT THIS PLAT MEETS THE REQUIREMENTS OF 27 VSA SECTION 1403 AND COMPLIES WITH VERMONT BOARD OF LAND SURVEYORS RULES, PART 5.4 AND 5.5 ADOPTED UNDER 26 VSA SECTION 2544(A).

SIGNED: *Timothy A. Patch*
TIMOTHY A. PATCH, L.S. 680



ONLY VALID WITH ORIGINAL STAMP

STATE OF VERMONT AGENCY OF TRANSPORTATION		SURVEYED: SGC ENGINEERING REVIEWED: TAP
		DATE: 04/01/2015 SCALE: 1"=40' FILE: 2125509ROW.DGN SHEET NO. 57 OF 64
STATUTORY SURVEY TOWN OF MARSHFIELD VERMONT US ROUTE 2 APPROXIMATELY FROM PLAINFIELD TOWN LINE TO CABOT TOWN LINE		

