

ORIGINAL DRAWING - INK ON POLYESTER FILM MEETING THE REQUIREMENTS OF 27 V.S.A. § 1403

PIN ID # 12X600



N/F
TRACEY WITHERSPOAN
BK. 70, PG. 342
JAN. 26, 2005

N/F
JEREMY ARMSTRONG &
JENNA AUBE
BK. 77, PG. 21
FEB. 2, 2007
BR #43

CABOT ROAD T.H. #1
VOLUME 1, PAGE 38, SEPTEMBER 28, 1901, 3 RODS WIDE
VOLUME 2, PAGE 241, JULY 15, 1815, ALTERS WIDTH OF
ROAD TO 4 RODS WIDE

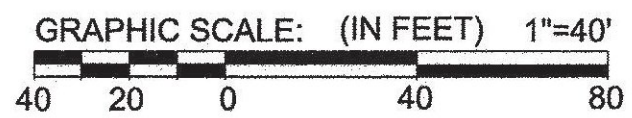
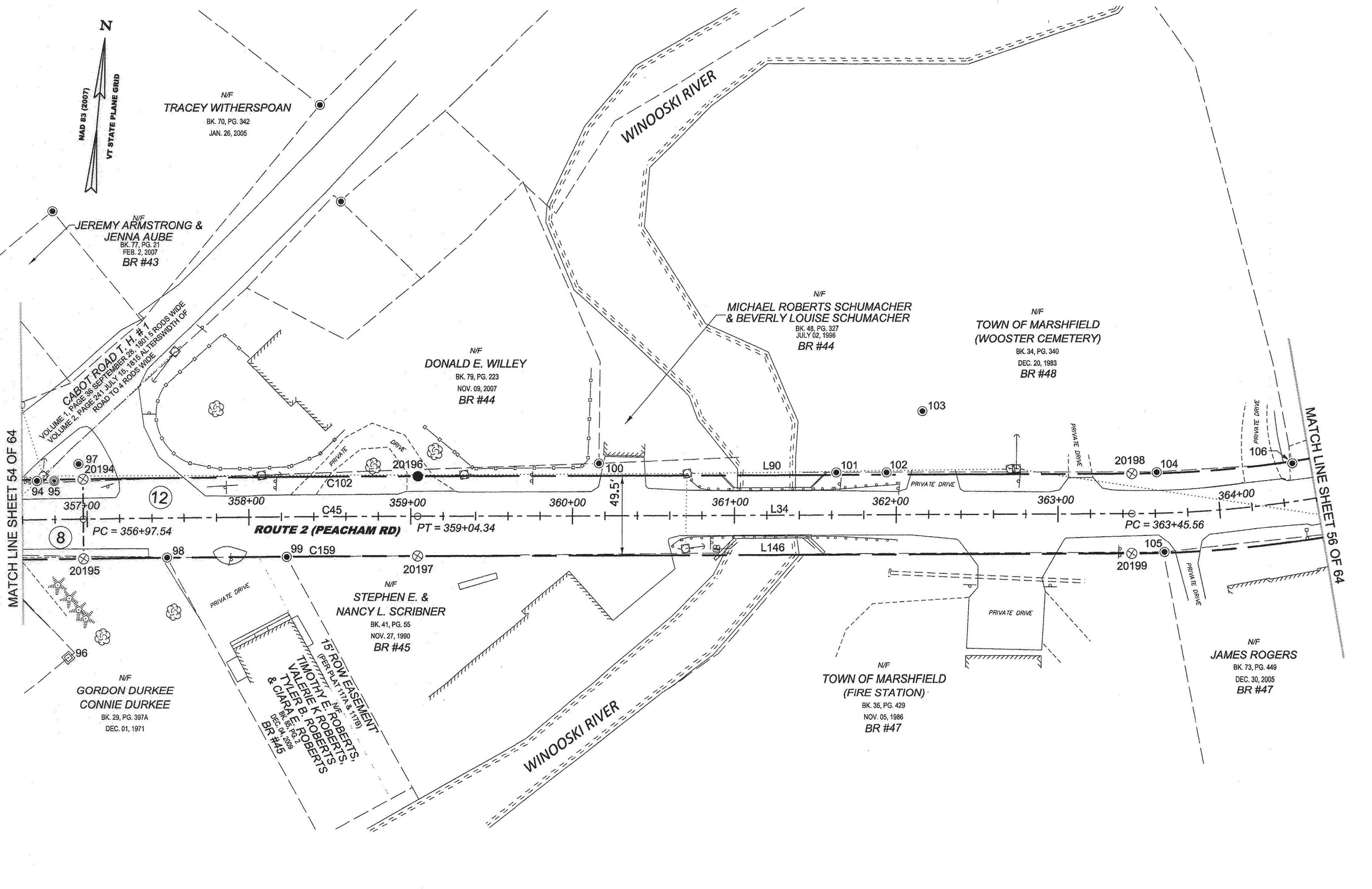
N/F
DONALD E. WILLEY
BK. 79, PG. 223
NOV. 09, 2007
BR #44

N/F
MICHAEL ROBERTS SCHUMACHER
& BEVERLY LOUISE SCHUMACHER
BK. 48, PG. 327
JULY 02, 1996
BR #44

N/F
TOWN OF MARSHFIELD
(WOOSTER CEMETERY)
BK. 34, PG. 340
DEC. 20, 1983
BR #48

MATCH LINE SHEET 54 OF 64

MATCH LINE SHEET 56 OF 64



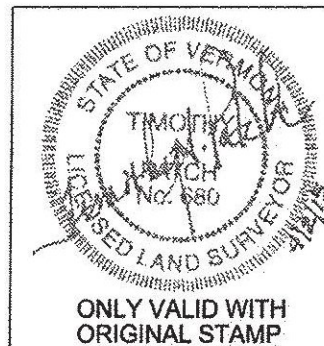
LEGEND:
SEE SHEET 1 OF 64
NOTES:
SEE SHEETS 2 & 3 OF 64
MONUMENT TABLE:
SEE SHEETS 6,7,8 OF 64
ROW CENTER LINE TABLE:
SEE SHEET 8 OF 64
ROW LIMIT LINE & CURVE TABLES:
SEE SHEET 9 OF 64

I CERTIFY THAT THIS PLAT IS BASED ON INFORMATION ABSTRACTED FROM DOCUMENTS, PAROL EVIDENCE, AND PHYSICAL EVIDENCE. THE SURVEY WORK IDENTIFIED HEREON IS CONSISTENT WITH THIS INFORMATION.

I CERTIFY THAT THIS PLAT MEETS THE REQUIREMENTS OF 27 VSA SECTION 1403 AND COMPLIES WITH VERMONT BOARD OF LAND SURVEYORS RULES, PART 5.4 AND 5.5 ADOPTED UNDER 26 VSA SECTION 2544(A).

SIGNED: *Timothy A. Patch*
TIMOTHY A. PATCH, L.S. 680

RECEIVED
APR 28 2015
MARSHFIELD, VERMONT
TOWN CLERK'S OFFICE



STATE OF VERMONT
AGENCY OF TRANSPORTATION



STATUTORY SURVEY
TOWN OF MARSHFIELD
VERMONT US ROUTE 2
APPROXIMATELY FROM PLAINFIELD
TOWN LINE TO CABOT TOWN LINE

SURVEYED:
SGC
ENGINEERING
REVIEWED:
TAP
DATE:
04/01/2015
SCALE:
1"=40'
FILE:
z12600ROW.DGN
SHEET NO.
55 OF 64