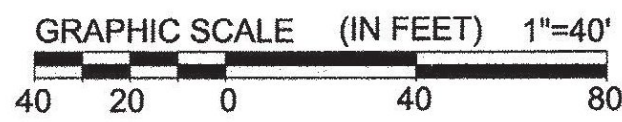
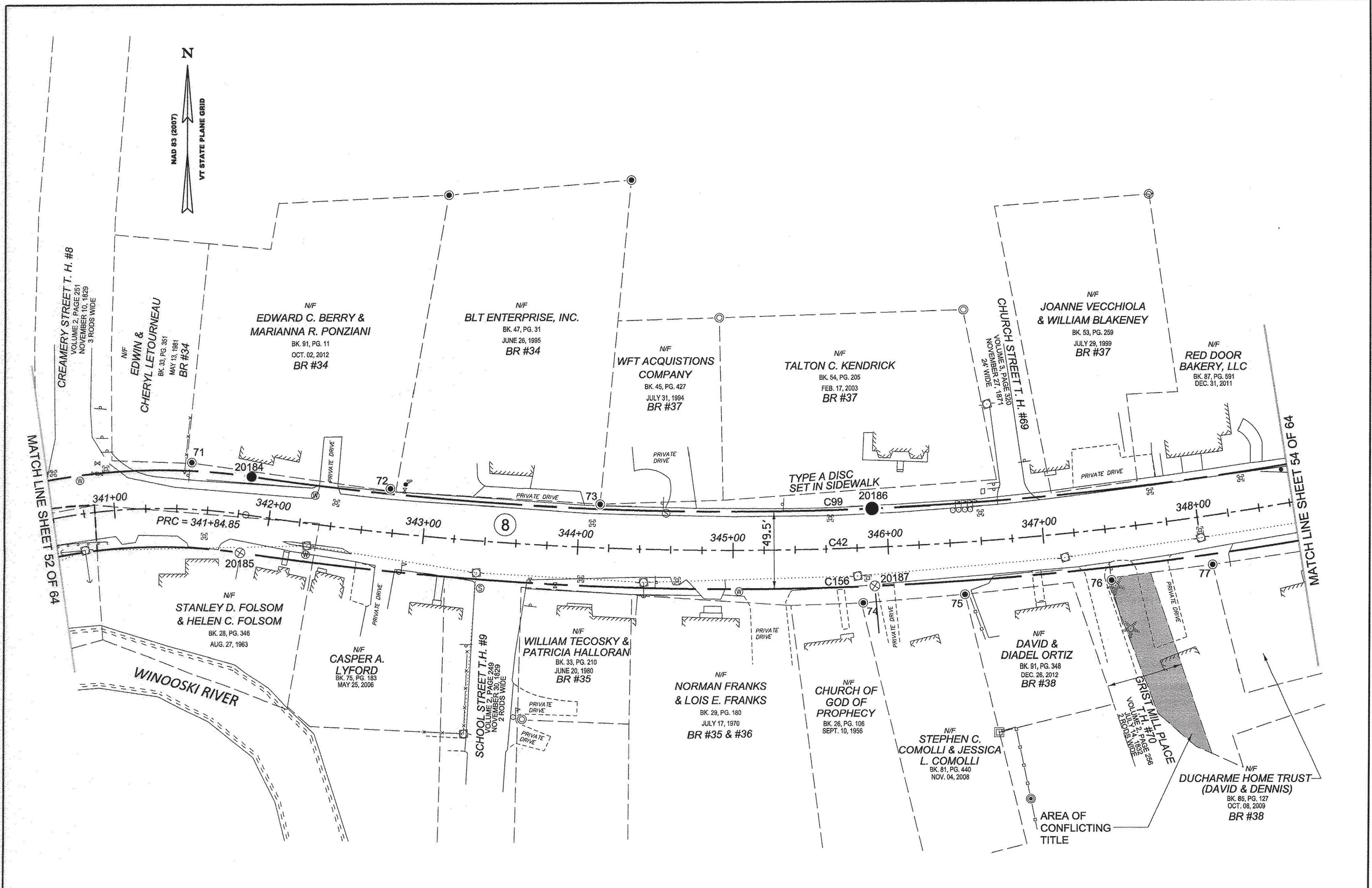


ORIGINAL DRAWING - INK ON POLYESTER FILM MEETING THE REQUIREMENTS OF 27 V.S.A. § 1403



**LEGEND:**  
SEE SHEET 1 OF 64

**NOTES:**  
SEE SHEETS 2 & 3 OF 64

**MONUMENT TABLE:**  
SEE SHEETS 6, 7, 8 OF 64

**ROW CENTER LINE TABLE:**  
SEE SHEET 8 OF 64

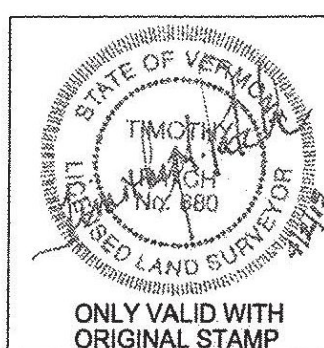
**ROW LIMIT LINE & CURVE TABLES:**  
SEE SHEET 9 OF 64

I CERTIFY THAT THIS PLAT IS BASED ON INFORMATION ABSTRACTED FROM DOCUMENTS, PAROL EVIDENCE, AND PHYSICAL EVIDENCE. THE SURVEY WORK IDENTIFIED HEREON IS CONSISTENT WITH THIS INFORMATION.

I CERTIFY THAT THIS PLAT MEETS THE REQUIREMENTS OF 27 VSA SECTION 1403 AND COMPLIES WITH VERMONT BOARD OF LAND SURVEYORS RULES, PART 5.4 AND 5.5 ADOPTED UNDER 26 VSA SECTION 2544(A).

SIGNED: *Timothy A. Patch*  
TIMOTHY A. PATCH, L.S. 680

RECEIVED  
APR 28 2015  
MARSHFIELD, VERMONT  
TOWN CLERK'S OFFICE



<b>STATE OF VERMONT AGENCY OF TRANSPORTATION</b>		SURVEYED: SGC ENGINEERING REVIEWED: TAP
<b>STATUTORY SURVEY</b> TOWN OF MARSHFIELD <b>VERMONT US ROUTE 2</b> APPROXIMATELY FROM PLAINFIELD TOWN LINE TO CABOT TOWN LINE		DATE: 04/01/2015 SCALE: 1"=40' FILE: 212600ROW.DGN SHEET NO. 53 OF 64

PIN ID # 12X600