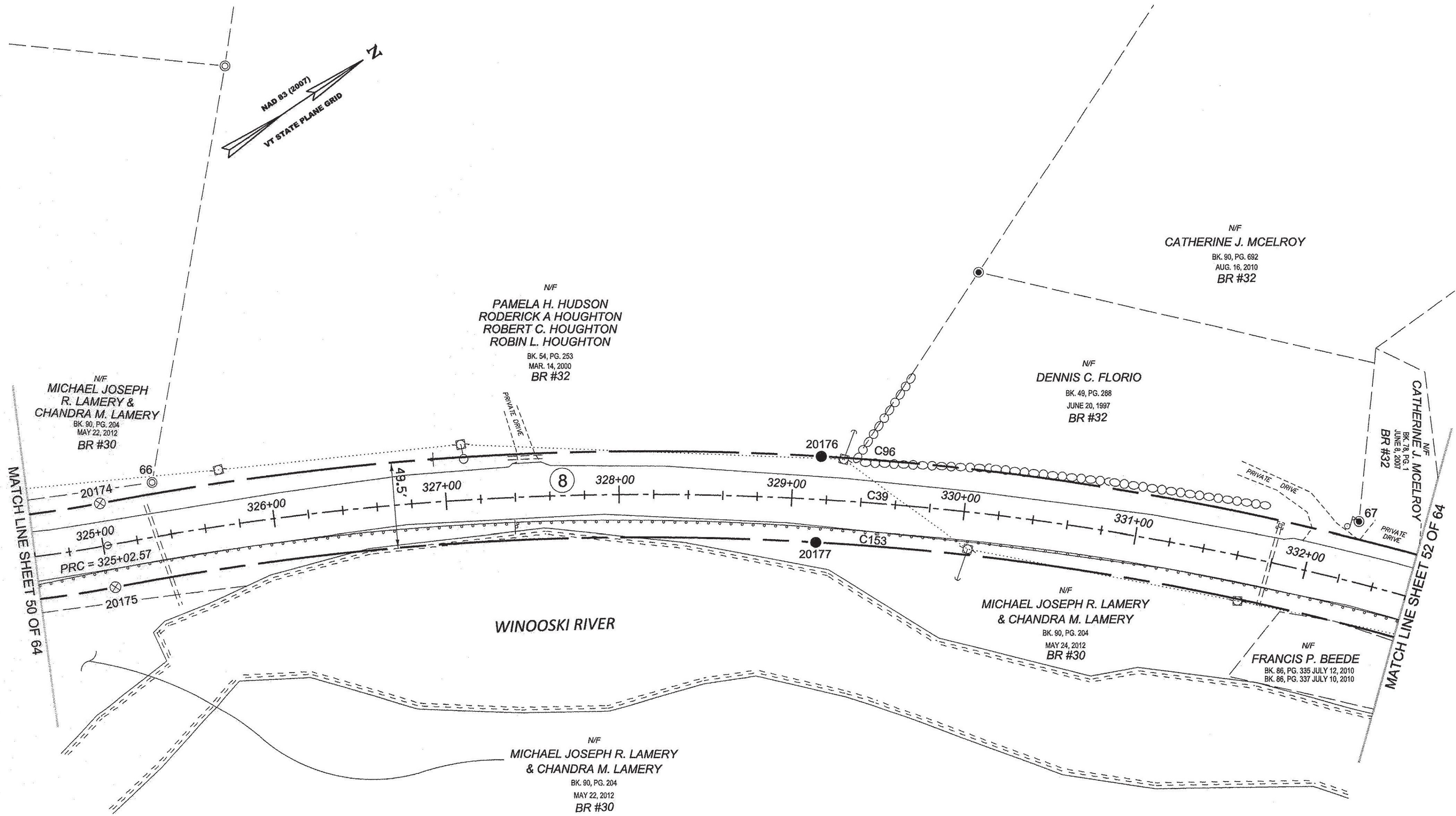


ORIGINAL DRAWING - INK ON POLYESTER FILM MEETING THE REQUIREMENTS OF 27 V.S.A. § 1403

PIN ID # 12X600



RECEIVED
 APR 28 2015
 MARSHFIELD, VERMONT
 TOWN CLERK'S OFFICE

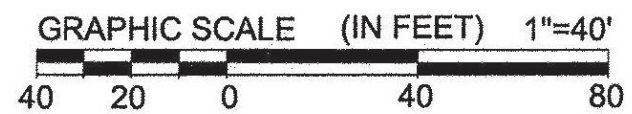
LEGEND:
 SEE SHEET 1 OF 64

NOTES:
 SEE SHEETS 2 & 3 OF 64

MONUMENT TABLE:
 SEE SHEETS 6, 7, 8 OF 64

ROW CENTER LINE TABLE:
 SEE SHEET 8 OF 64

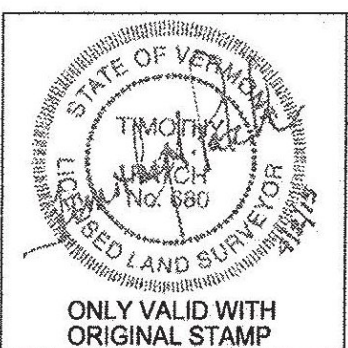
ROW LIMIT LINE & CURVE TABLES:
 SEE SHEET 9 OF 64



I CERTIFY THAT THIS PLAT IS BASED ON INFORMATION ABSTRACTED FROM DOCUMENTS, PAROL EVIDENCE, AND PHYSICAL EVIDENCE. THE SURVEY WORK IDENTIFIED HEREON IS CONSISTENT WITH THIS INFORMATION.

I CERTIFY THAT THIS PLAT MEETS THE REQUIREMENTS OF 27 V.S.A SECTION 1403 AND COMPLIES WITH VERMONT BOARD OF LAND SURVEYORS RULES, PART 5.4 AND 5.5 ADOPTED UNDER 26 V.S.A SECTION 2644(A).

SIGNED: *Timothy A. Patch*
 TIMOTHY A. PATCH, L.S. 680



| | | |
|---|--|---|
| STATE OF VERMONT AGENCY OF TRANSPORTATION | | SURVEYED: SGC ENGINEERING REVIEWED: TAP |
| STATUTORY SURVEY | | DATE: 04/01/2015 |
| TOWN OF MARSHFIELD | | SCALE: 1"=40' |
| VERMONT US ROUTE 2 | | FILE: 2126600ROW.DGN |
| APPROXIMATELY FROM PLAINFIELD TOWN LINE TO CABOT TOWN LINE | | SHEET NO. 51 OF 64 |