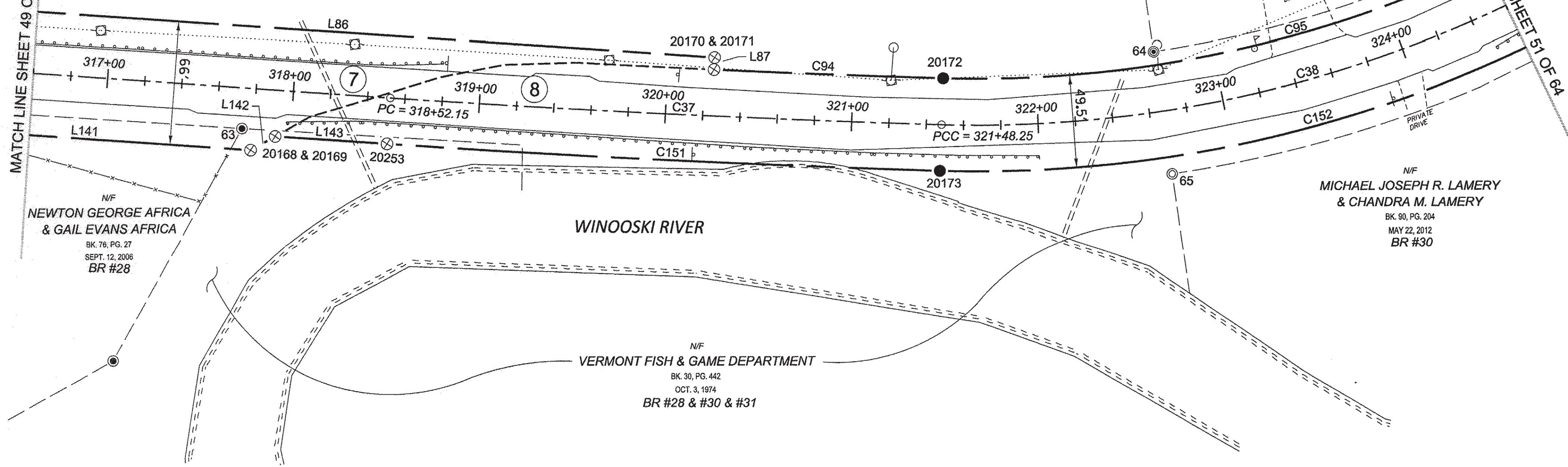


N/F
GERARD E. PILETTE, JR.
 BK. 50, PG. 50
 OCT. 08, 1997
 BR #27 & #28 & #29

N/F
**MICHAEL JOSEPH R. LAMERY
 & CHANDRA M. LAMERY**
 BK. 90, PG. 204
 MAY 22, 2012
 BR #30

MATCH LINE SHEET 49 OF 64

MATCH LINE SHEET 51 OF 64



N/F
**NEWTON GEORGE AFRICA
 & GAIL EVANS AFRICA**
 BK. 76, PG. 27
 SEPT. 12, 2006
 BR #28

N/F
**MICHAEL JOSEPH R. LAMERY
 & CHANDRA M. LAMERY**
 BK. 90, PG. 204
 MAY 22, 2012
 BR #30

N/F
VERMONT FISH & GAME DEPARTMENT
 BK. 30, PG. 442
 OCT. 3, 1974
 BR #28 & #30 & #31



LEGEND:
 SEE SHEET 1 OF 64

NOTES:
 SEE SHEETS 2 & 3 OF 64

MONUMENT TABLE:
 SEE SHEETS 6,7,8 OF 64

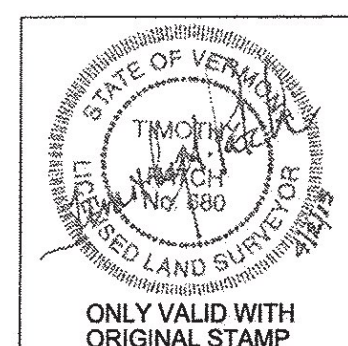
ROW CENTER LINE TABLE:
 SEE SHEET 8 OF 64

ROW LIMIT LINE & CURVE TABLES:
 SEE SHEET 9 OF 64

I CERTIFY THAT THIS PLAT IS BASED ON INFORMATION ABSTRACTED FROM DOCUMENTS, PAROL EVIDENCE, AND PHYSICAL EVIDENCE. THE SURVEY WORK IDENTIFIED HEREON IS CONSISTENT WITH THIS INFORMATION.

I CERTIFY THAT THIS PLAT MEETS THE REQUIREMENTS OF 27 VSA SECTION 1403 AND COMPLIES WITH VERMONT BOARD OF LAND SURVEYORS RULES, PART 5.4 AND 5.5 ADOPTED UNDER 26 VSA SECTION 2544(A).

SIGNED: *Timothy A. Patch*
 TIMOTHY A. PATCH, L.S. 680



**STATE OF VERMONT
 AGENCY OF TRANSPORTATION**



STATUTORY SURVEY
 TOWN OF MARSHFIELD
VERMONT US ROUTE 2
 APPROXIMATELY FROM PLAINFIELD
 TOWN LINE TO CABOT TOWN LINE

SURVEYED: SEC	DATE: 04/01/2015
ENGINEERING REVIEWED: TAP	SCALE: 1"=40'
FILE: 212600ROW.DGN	SHEET NO. 50 OF 64

ORIGINAL DRAWING - INK ON POLYESTER FILM MEETING THE REQUIREMENTS OF 27 V.S.A. § 1403

PIN ID# 12X600

