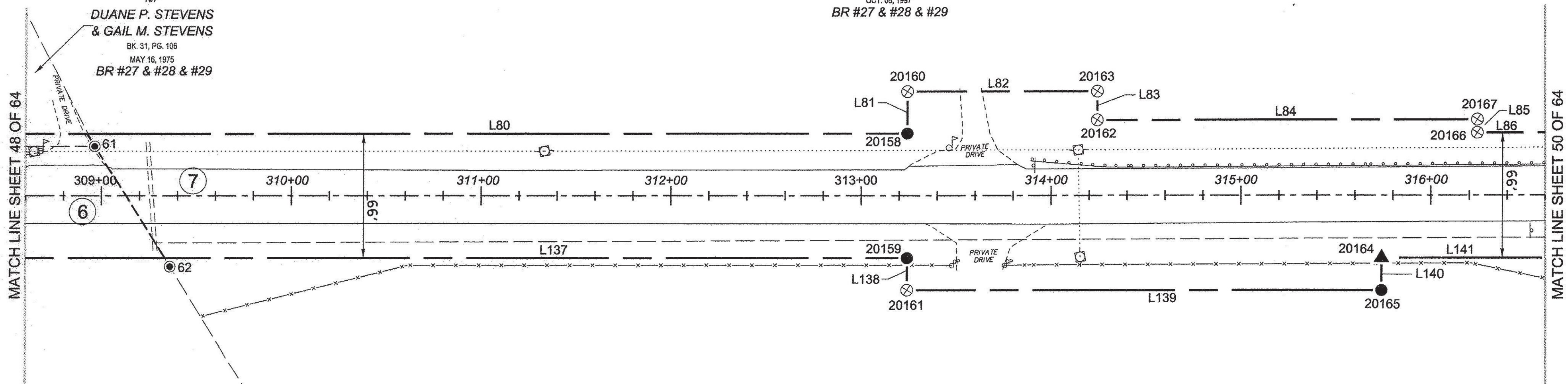


N/F
**DUANE P. STEVENS
 & GAIL M. STEVENS**
 BK. 31, PG. 106
 MAY 16, 1975
 BR #27 & #28 & #29

N/F
GERARD E. PILETTE, JR.
 BK. 50, PG. 50
 OCT. 08, 1997
 BR #27 & #28 & #29

N/F
THOMAS JOHNSON
 BK. 33, PG. 118
 NOV. 19, 1979
 BR #28

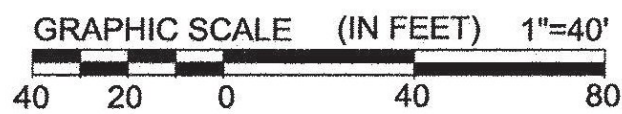
N/F
**NEWTON GEORGE AFRICA
 & GAIL EVANS AFRICA**
 BK. 76, PG. 27
 SEPT. 12, 2008
 BR #28



MATCH LINE SHEET 48 OF 64

MATCH LINE SHEET 50 OF 64

ORIGINAL DRAWING - INK ON POLYESTER FILM MEETING THE REQUIREMENTS OF 27 V.S.A. § 1403



LEGEND:
 SEE SHEET 1 OF 64

NOTES:
 SEE SHEETS 2 & 3 OF 64

MONUMENT TABLE:
 SEE SHEETS 6, 7, 8 OF 64

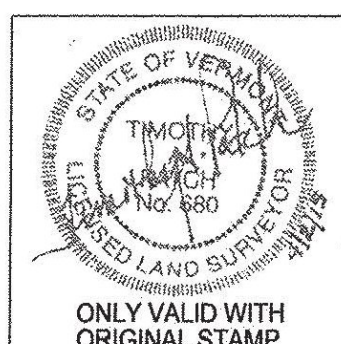
ROW CENTER LINE TABLE:
 SEE SHEET 8 OF 64

ROW LIMIT LINE & CURVE TABLES:
 SEE SHEET 9 OF 64

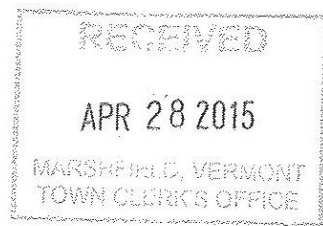
I CERTIFY THAT THIS PLAT IS BASED ON INFORMATION ABSTRACTED FROM DOCUMENTS, PAROL EVIDENCE, AND PHYSICAL EVIDENCE. THE SURVEY WORK IDENTIFIED HEREON IS CONSISTENT WITH THIS INFORMATION.

I CERTIFY THAT THIS PLAT MEETS THE REQUIREMENTS OF 27 VSA SECTION 1403 AND COMPLIES WITH VERMONT BOARD OF LAND SURVEYORS RULES, PART 5.4 AND 5.5 ADOPTED UNDER 26 VSA SECTION 2544(A).

SIGNED: *Timothy A. Patch*
 TIMOTHY A. PATCH, L.S. 680



STATE OF VERMONT AGENCY OF TRANSPORTATION		SURVEYED: SGC ENGINEERING REVIEWED: TAP
STATUTORY SURVEY TOWN OF MARSHFIELD		DATE: 04/01/2015
VERMONT US ROUTE 2 APPROXIMATELY FROM PLAINFIELD TOWN LINE TO CABOT TOWN LINE		SCALE: 1"=40'
		FILE: 212600ROW.DGN
		SHEET NO. 49 OF 64



PIN ID # 12X800