

N/F  
**JOYCE WHEELER**  
 BK. 43, PG. 185  
 AUG. 6, 1992  
 BR #27 & #28 & #29

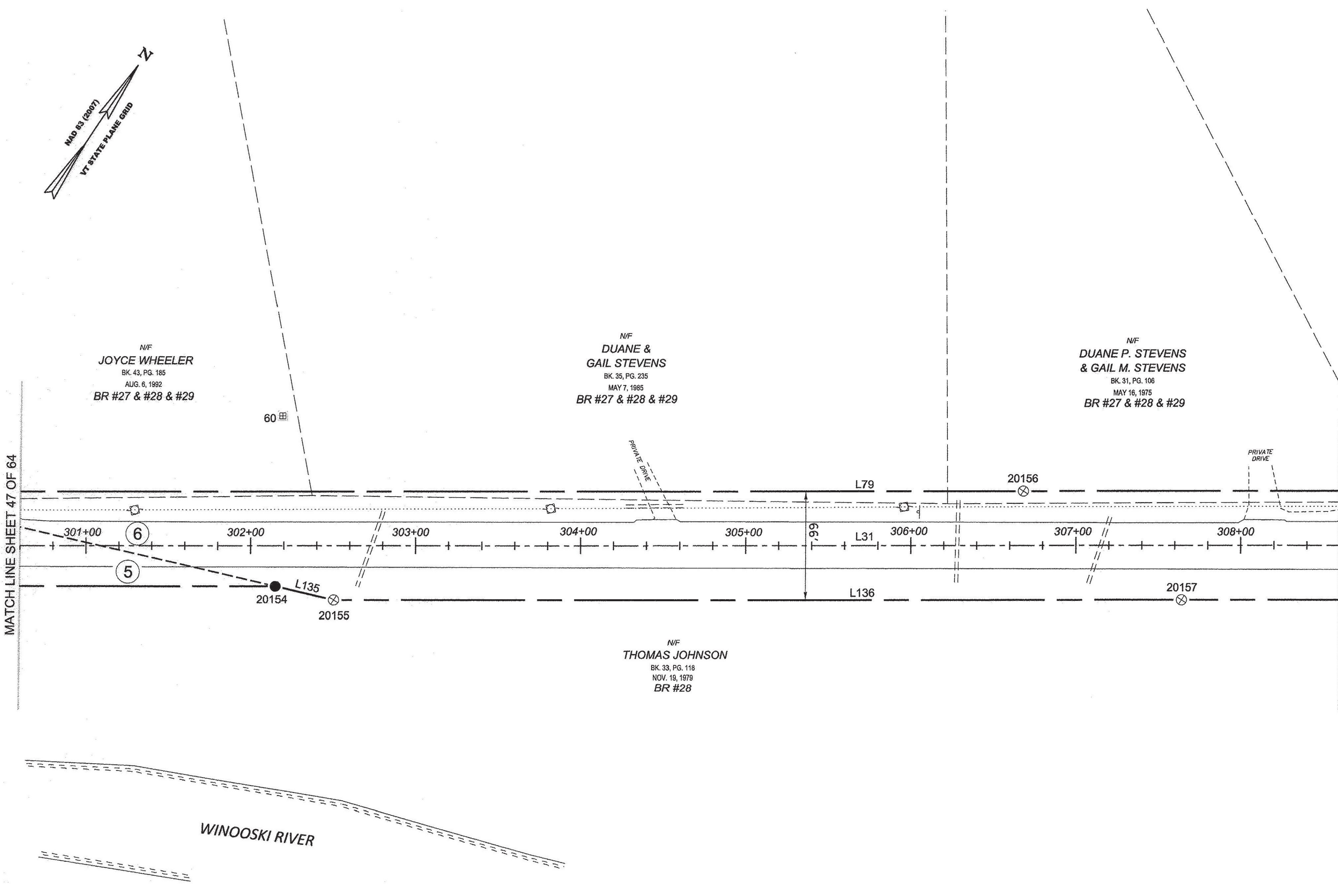
N/F  
**DUANE & GAIL STEVENS**  
 BK. 35, PG. 235  
 MAY 7, 1985  
 BR #27 & #28 & #29

N/F  
**DUANE P. STEVENS & GAIL M. STEVENS**  
 BK. 31, PG. 106  
 MAY 16, 1975  
 BR #27 & #28 & #29

N/F  
**THOMAS JOHNSON**  
 BK. 33, PG. 118  
 NOV. 19, 1979  
 BR #28

MATCH LINE SHEET 47 OF 64

MATCH LINE SHEET 49 OF 64



ORIGINAL DRAWING - INK ON POLYESTER FILM MEETING THE REQUIREMENTS OF 27 V.S.A. § 1403

PIN ID # 12x800

RECEIVED  
 APR 28 2015  
 MARSHFIELD, VERMONT  
 TOWN CLERK'S OFFICE

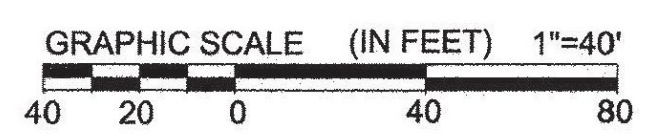
**LEGEND:**  
 SEE SHEET 1 OF 64

**NOTES:**  
 SEE SHEETS 2 & 3 OF 64

**MONUMENT TABLE:**  
 SEE SHEETS 6, 7, 8 OF 64

**ROW CENTER LINE TABLE:**  
 SEE SHEET 8 OF 64

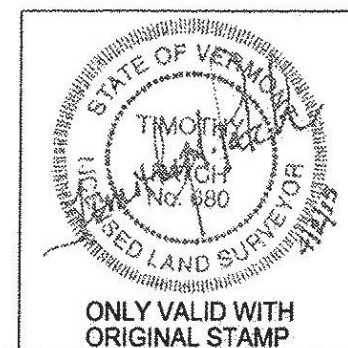
**ROW LIMIT LINE & CURVE TABLES:**  
 SEE SHEET 9 OF 64



I CERTIFY THAT THIS PLAT IS BASED ON INFORMATION ABSTRACTED FROM DOCUMENTS, PAROL EVIDENCE, AND PHYSICAL EVIDENCE. THE SURVEY WORK IDENTIFIED HEREON IS CONSISTENT WITH THIS INFORMATION.

I CERTIFY THAT THIS PLAT MEETS THE REQUIREMENTS OF 27 VSA SECTION 1403 AND COMPLIES WITH VERMONT BOARD OF LAND SURVEYORS RULES, PART 5.4 AND 5.5 ADOPTED UNDER 26 VSA SECTION 2544(A).

SIGNED: *Timothy A. Patch*  
 TIMOTHY A. PATCH, L.S. 680



<b>STATE OF VERMONT AGENCY OF TRANSPORTATION</b>		SURVEYED: SJC ENGINEERING REVIEWED: TAP
<b>STATUTORY SURVEY</b>		DATE: 04/07/2015
TOWN OF MARSHFIELD		SCALE: 1"=40'
<b>VERMONT US ROUTE 2</b>		FILE: z12x600ROW.DGN
APPROXIMATELY FROM PLAINFIELD TOWN LINE TO CABOT TOWN LINE		SHEET NO. 48 OF 64