

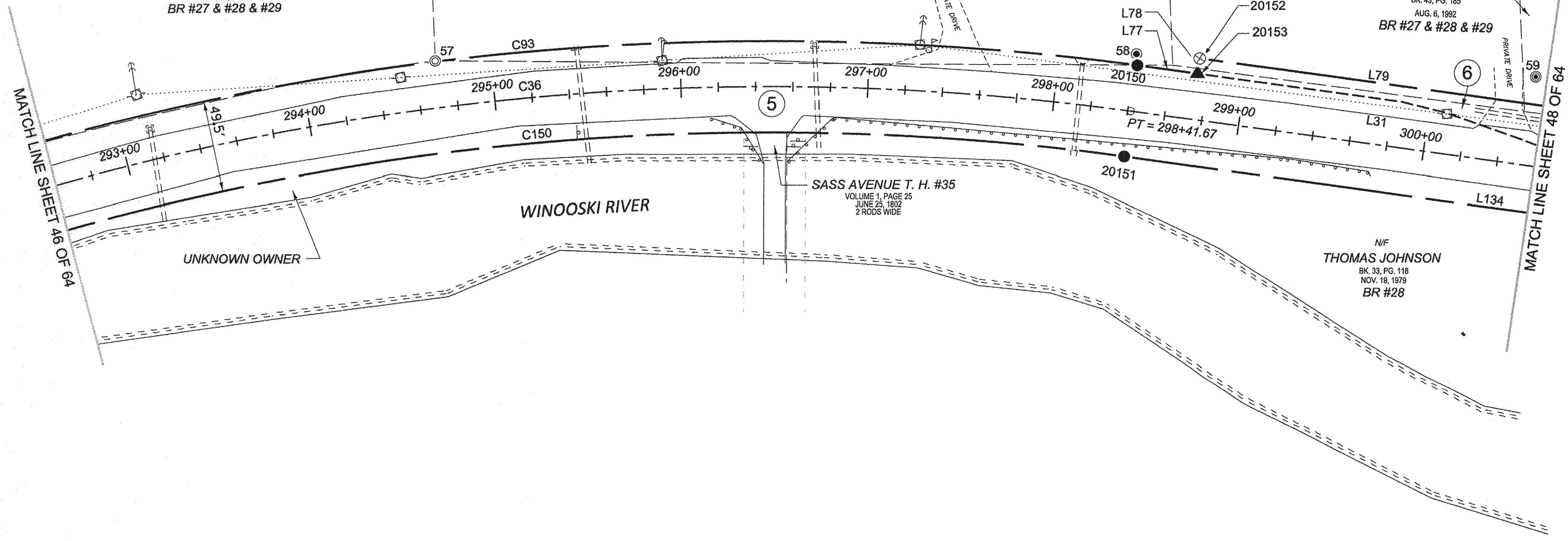
N/F
 GERI-ANNE DANIELS,
 KAREN DUCHARME,
 MONIQUE LINK,
 RICHARD DUFRESNE,
 & RONALD DUFRESNE
 BK. 65, PG. 159
 JULY 28, 2003
 BR #27 & #28 & #29

N/F
 WARRENE GOSLANT
 & RICHARD W. STEEL
 BK. 80, PG. 439
 MAY 23, 2008
 BR #27 & #28 & #29

N/F
 KENNETH E. GOSLANT
 & SHARON R. SPRAGUE
 BK. 85, PG. 387
 MAR. 3, 2010
 BR #27 & #28 & #29

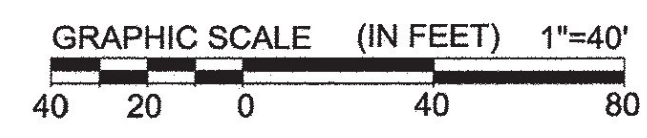
N/F
 JOYCE WHEELER
 BK. 43, PG. 185
 AUG. 6, 1992
 BR #27 & #28 & #29

N/F
 THOMAS JOHNSON
 BK. 33, PG. 118
 NOV. 19, 1979
 BR #28



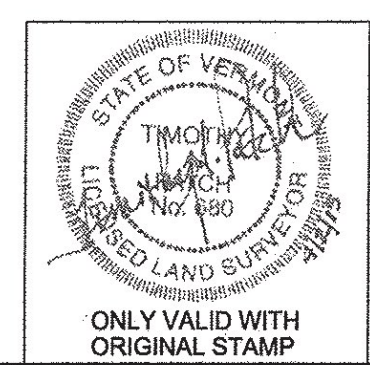
MATCH LINE SHEET 46 OF 64

MATCH LINE SHEET 48 OF 64



LEGEND:
 SEE SHEET 1 OF 64
 NOTES:
 SEE SHEETS 2 & 3 OF 64
 MONUMENT TABLE:
 SEE SHEETS 6,7,8 OF 64
 ROW CENTER LINE TABLE:
 SEE SHEET 8 OF 64
 ROW LIMIT LINE & CURVE TABLES:
 SEE SHEET 9 OF 64

I CERTIFY THAT THIS PLAT IS BASED ON INFORMATION ABSTRACTED FROM DOCUMENTS, PAROL EVIDENCE, AND PHYSICAL EVIDENCE. THE SURVEY WORK IDENTIFIED HEREON IS CONSISTENT WITH THIS INFORMATION.
 I CERTIFY THAT THIS PLAT MEETS THE REQUIREMENTS OF 27 V.S.A. SECTION 1403 AND COMPLIES WITH VERMONT BOARD OF LAND SURVEYORS RULES, PART 5.4 AND 5.5 ADOPTED UNDER 26 V.S.A. SECTION 2544(A).
 SIGNED: *Timothy A. Patch*
 TIMOTHY A. PATCH, L.S. 680



STATE OF VERMONT AGENCY OF TRANSPORTATION		STATUTORY SURVEY TOWN OF MARSHFIELD VERMONT US ROUTE 2 APPROXIMATELY FROM PLAINFIELD TOWN LINE TO CABOT TOWN LINE	SURVEYED: SGC
			ENGINEERING
DATE: 04/01/2015			REVIEWED: TAP
SCALE: 1"=40'			FILE: 212600ROW.DGN
SHEET NO. 47 OF 64			

RECEIVED
 APR 28 2015
 MARSHFIELD, VERMONT
 TOWN CLERK'S OFFICE

ORIGINAL DRAWING - INK ON POLYESTER FILM MEETING THE REQUIREMENTS OF 27 V.S.A. § 1403

PIN ID # 12X600