

N/F
 ELIZABETH ANN LARSEN,
 RICHARD A. WELLS,
 RONALD R. WELLS,
 RUSSELL M. WELLS,
 RAEGAN W. WELLS,
 ELAINE C. CLISHAM,
 RANDALL H. WELLS &
 RODNEY C. WELLS
 BK. 55, PG. 455
 SEPT. 5, 2000

N/F
 GERI-ANNE DANIELS,
 KAREN DUCHARME,
 MONIQUE LINK,
 RICHARD DUFRESNE,
 & RONALD DUFRESNE
 BK. 65, PG. 159
 JULY 28, 2003

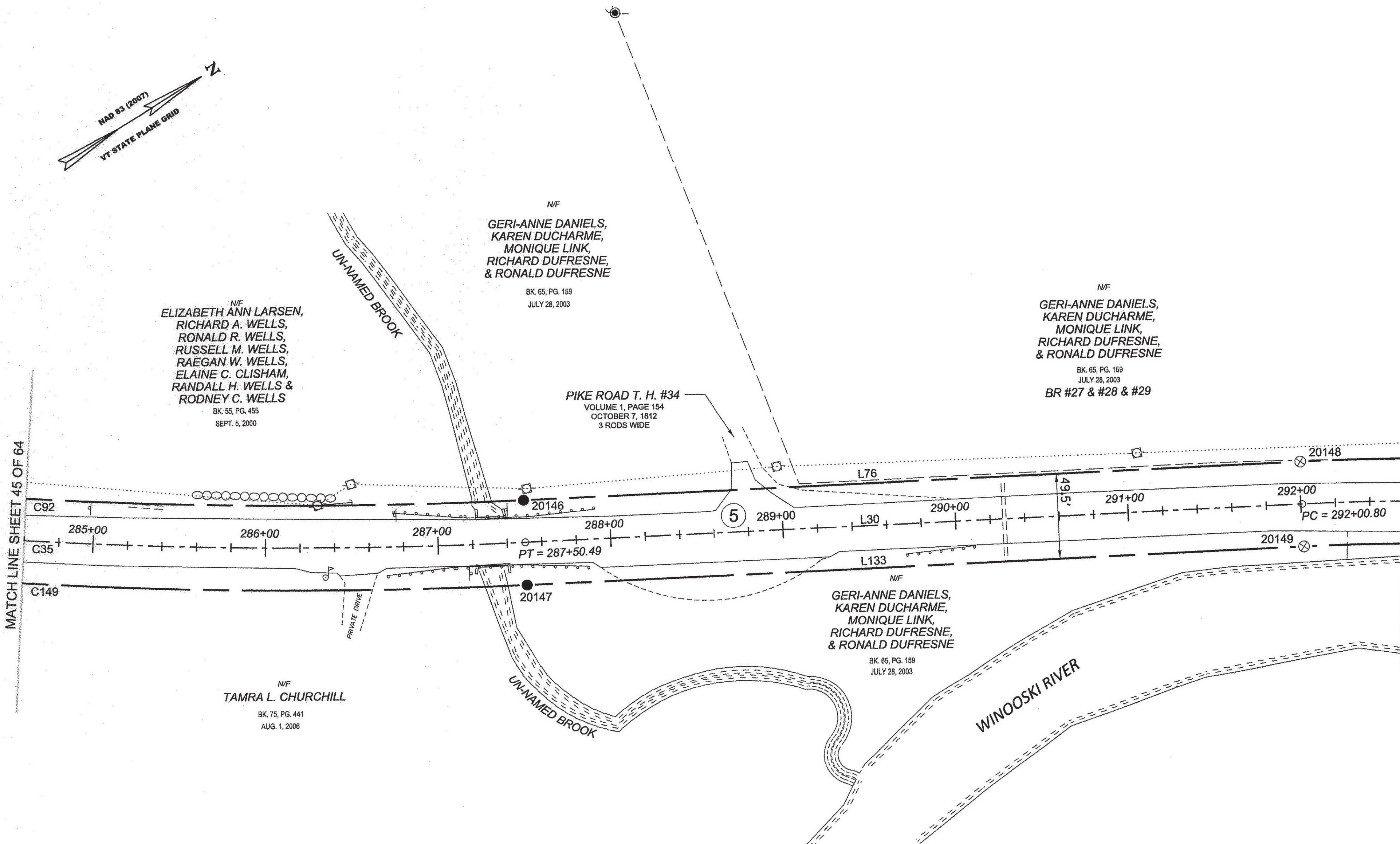
N/F
 GERI-ANNE DANIELS,
 KAREN DUCHARME,
 MONIQUE LINK,
 RICHARD DUFRESNE,
 & RONALD DUFRESNE
 BK. 65, PG. 159
 JULY 28, 2003
 BR #27 & #28 & #29

PIKE ROAD T. H. #34
 VOLUME 1, PAGE 154
 OCTOBER 7, 1812
 3 RODS WIDE

N/F
 TAMRA L. CHURCHILL
 BK. 76, PG. 441
 AUG. 1, 2006

MATCH LINE SHEET 45 OF 64

MATCH LINE SHEET 47 OF 64

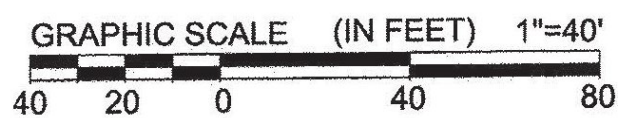


ORIGINAL DRAWING - INK ON POLYESTER FILM MEETING THE REQUIREMENTS OF 27 V.S.A. § 1403

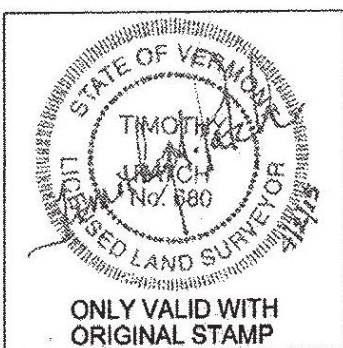
PIN ID # 12X600

RECEIVED
 APR 28 2015
 MARSHFIELD, VERMONT
 TOWN CLERK'S OFFICE

LEGEND:
 SEE SHEET 1 OF 64
 NOTES:
 SEE SHEETS 2 & 3 OF 64
 MONUMENT TABLE:
 SEE SHEETS 6, 7, 8 OF 64
 ROW CENTER LINE TABLE:
 SEE SHEET 8 OF 64
 ROW LIMIT LINE & CURVE TABLES:
 SEE SHEET 9 OF 64



I CERTIFY THAT THIS PLAT IS BASED ON INFORMATION ABSTRACTED FROM DOCUMENTS, PAROL EVIDENCE, AND PHYSICAL EVIDENCE. THE SURVEY WORK IDENTIFIED HEREON IS CONSISTENT WITH THIS INFORMATION.
 I CERTIFY THAT THIS PLAT MEETS THE REQUIREMENTS OF 27 VSA SECTION 1403 AND COMPLIES WITH VERMONT BOARD OF LAND SURVEYORS RULES, PART 5.4 AND 5.5 ADOPTED UNDER 26 VSA SECTION 2544(A).
 SIGNED: *Timothy A. Patch*
 TIMOTHY A. PATCH, L.S. 680



STATE OF VERMONT AGENCY OF TRANSPORTATION		SURVEYED: SSC ENGINEERING
STATUTORY SURVEY TOWN OF MARSHFIELD		REVIEWED: TAP
VERMONT US ROUTE 2 APPROXIMATELY FROM PLAINFIELD TOWN LINE TO CABOT TOWN LINE		DATE: 04/01/2015
		SCALE: 1"=40'
		FILE: 2126200ROW.DGN
		SHEET NO. 46 OF 64