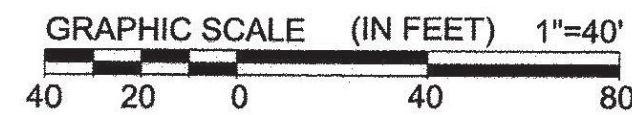
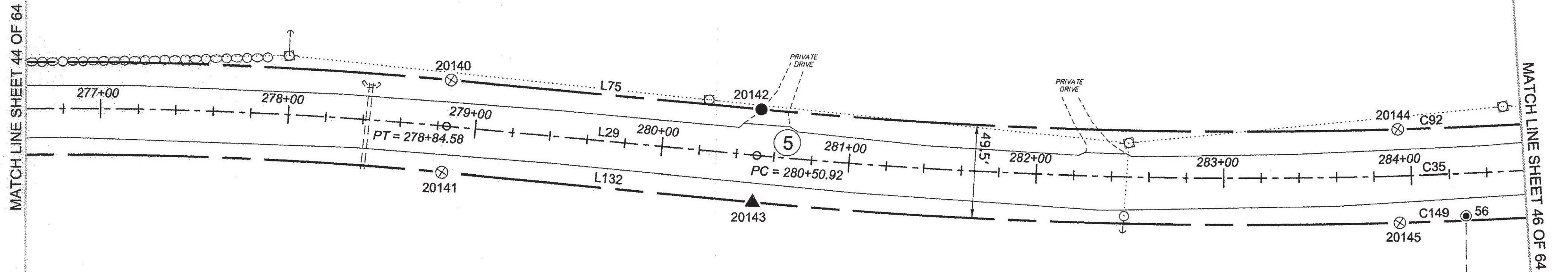


N/F
 ELIZABETH ANN LARSEN,
 RICHARD A. WELLS,
 RONALD R. WELLS,
 RUSSELL M. WELLS,
 RAEGAN W. WELLS,
 ELAINE C. CLISHAM,
 RANDALL H. WELLS &
 RODNEY C. WELLS
 BK. 55, PG. 455
 SEPT. 5, 2000

N/F
 PATRICIA A. WRIGHT,
 ERNEST R. WRIGHT
 & MARGARET A. WRIGHT
 BK. 33, PG. 368
 APRIL 20, 1981

N/F
 TAMRA L. CHURCHILL
 BK. 75, PG. 441
 AUG. 1, 2006



LEGEND:
 SEE SHEET 1 OF 64

NOTES:
 SEE SHEETS 2 & 3 OF 64

MONUMENT TABLE:
 SEE SHEETS 6, 7, 8 OF 64

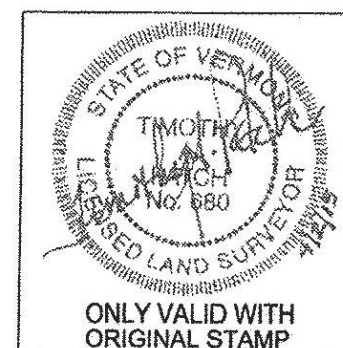
ROW CENTER LINE TABLE:
 SEE SHEET 8 OF 64

ROW LIMIT LINE & CURVE TABLES:
 SEE SHEET 9 OF 64

I CERTIFY THAT THIS PLAT IS BASED ON INFORMATION ABSTRACTED FROM DOCUMENTS, PAROL EVIDENCE, AND PHYSICAL EVIDENCE. THE SURVEY WORK IDENTIFIED HEREON IS CONSISTENT WITH THIS INFORMATION.

I CERTIFY THAT THIS PLAT MEETS THE REQUIREMENTS OF 27 VSA SECTION 1403 AND COMPLIES WITH VERMONT BOARD OF LAND SURVEYORS RULES, PART 5.4 AND 5.5 ADOPTED UNDER 26 VSA SECTION 2544(A).

SIGNED: *Timothy A. Patch*
 TIMOTHY A. PATCH, L.S. 680



**STATE OF VERMONT
 AGENCY OF TRANSPORTATION**



STATUTORY SURVEY
 TOWN OF MARSHFIELD
VERMONT US ROUTE 2
 APPROXIMATELY FROM PLAINFIELD
 TOWN LINE TO CABOT TOWN LINE

SURVEYED:
 SGC
 ENGINEERING
 REVIEWED:
 TAP

DATE:
 04/01/2015

SCALE:
 1"=40'

FILE:
 z:\26600ROW.DGN

SHEET NO.
 45 OF 64

ORIGINAL DRAWING - INK ON POLYESTER FILM MEETING THE REQUIREMENTS OF 27 V.S.A. § 1403

PIN ID # 12X600

