

N/F  
WELLS FARGO BANK, AS TRUSTEE  
BK. 93, PG. 226  
MAY 28, 2014

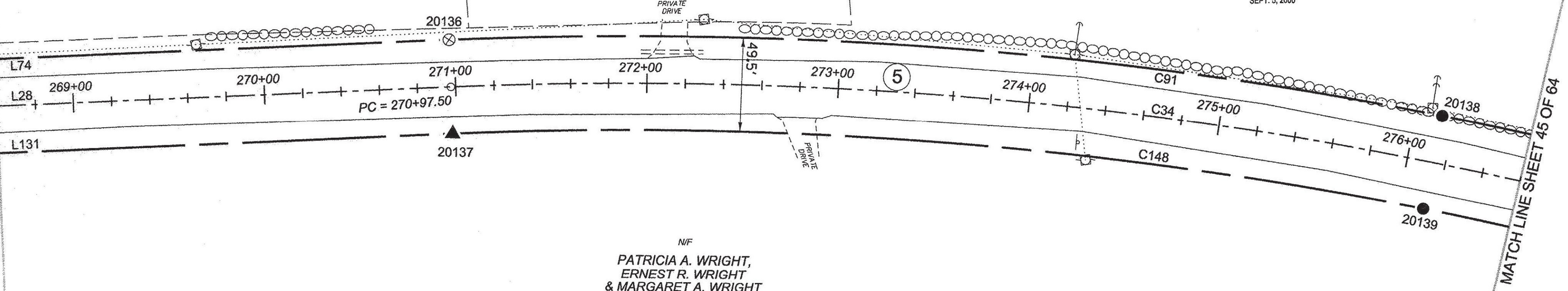
N/F  
ARNOLD R. ASHFORD  
& DIANA L. ASHFORD  
BK. 57, PG. 168  
AUG. 8, 2001

N/F  
ELIZABETH ANN LARSEN,  
RICHARD A. WELLS,  
RONALD R. WELLS,  
RUSSELL M. WELLS,  
RAEGAN W. WELLS,  
ELAINE C. CLISHAM,  
RANDALL H. WELLS &  
RODNEY C. WELLS  
BK. 55, PG. 455  
SEPT. 5, 2000

N/F  
PATRICIA A. WRIGHT,  
ERNEST R. WRIGHT  
& MARGARET A. WRIGHT  
BK. 33, PG. 368  
APRIL 20, 1981

MATCH LINE SHEET 43 OF 64

MATCH LINE SHEET 45 OF 64



ORIGINAL DRAWING - INK ON POLYESTER FILM MEETING THE REQUIREMENTS OF 27 V.S.A. § 1403  
PIN ID # 12X600

RECEIVED  
APR 28 2015  
MARSHFIELD, VERMONT  
TOWN CLERK'S OFFICE

**LEGEND:**  
SEE SHEET 1 OF 64

**NOTES:**  
SEE SHEETS 2 & 3 OF 64

**MONUMENT TABLE:**  
SEE SHEETS 6,7,8 OF 64

**ROW CENTER LINE TABLE:**  
SEE SHEET 8 OF 64

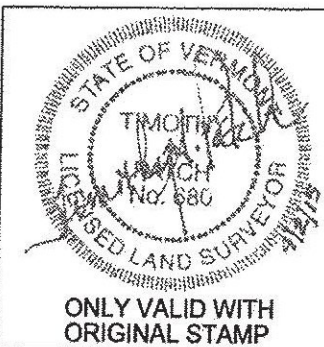
**ROW LIMIT LINE & CURVE TABLES:**  
SEE SHEET 9 OF 64



I CERTIFY THAT THIS PLAT IS BASED ON INFORMATION ABSTRACTED FROM DOCUMENTS, PAROL EVIDENCE, AND PHYSICAL EVIDENCE. THE SURVEY WORK IDENTIFIED HEREON IS CONSISTENT WITH THIS INFORMATION.

I CERTIFY THAT THIS PLAT MEETS THE REQUIREMENTS OF 27 VSA SECTION 1403 AND COMPLIES WITH VERMONT BOARD OF LAND SURVEYORS RULES, PART 5.4 AND 5.5 ADOPTED UNDER 26 VSA SECTION 2644(A).

SIGNED: *Timothy A. Patch*  
TIMOTHY A. PATCH, L.S. 680



<b>STATE OF VERMONT AGENCY OF TRANSPORTATION</b>		SURVEYED: SGC ENGINEERING REVIEWED: TAP
<b>STATUTORY SURVEY</b>		DATE: 04/01/2015
TOWN OF MARSHFIELD		SCALE: 1"=40'
<b>VERMONT US ROUTE 2</b>		FILE: 2125609ROW.DGN
APPROXIMATELY FROM PLAINFIELD TOWN LINE TO CABOT TOWN LINE		SHEET NO. 44 OF 64