

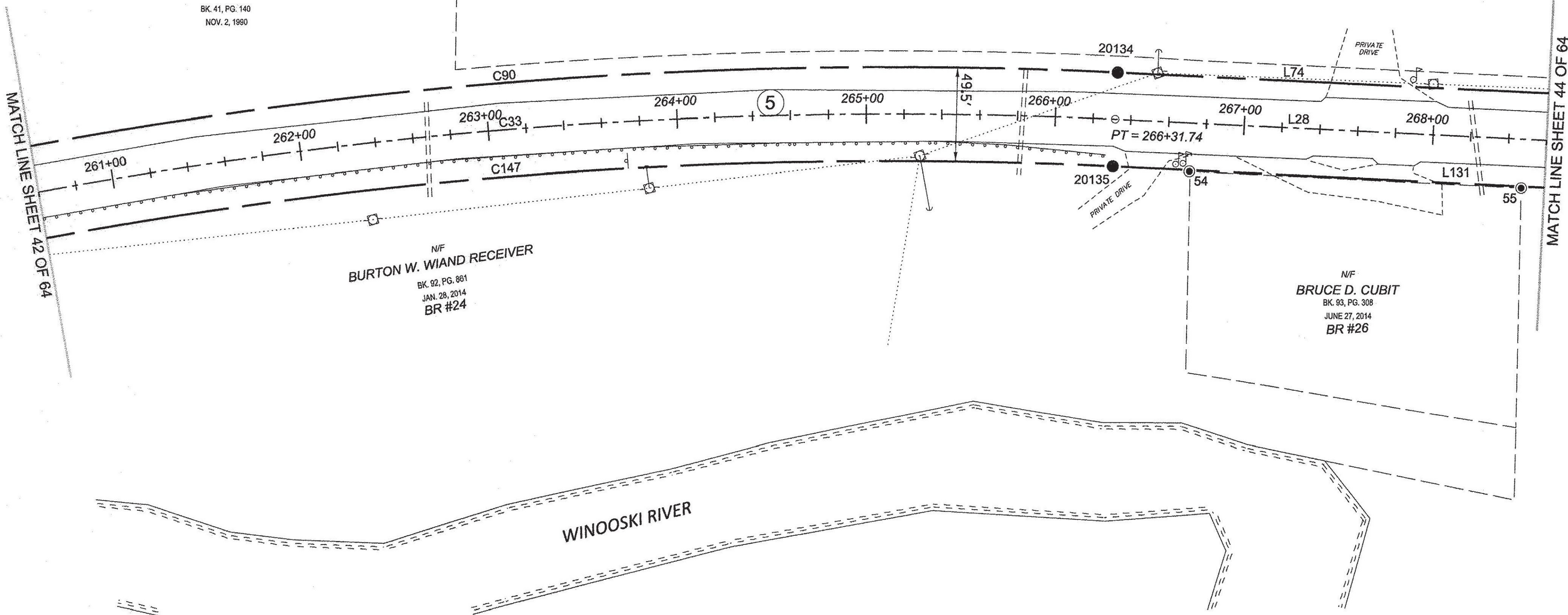


N/F
WELLS FARGO BANK, AS TRUSTEE
 BK. 93, PG. 226
 MAY 28, 2014

N/F
BILL BARBER
 BK. 41, PG. 140
 NOV. 2, 1980

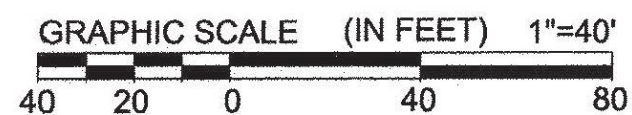
N/F
BURTON W. WIAND RECEIVER
 BK. 92, PG. 861
 JAN. 28, 2014
 BR #24

N/F
BRUCE D. CUBIT
 BK. 93, PG. 308
 JUNE 27, 2014
 BR #26



MATCH LINE SHEET 42 OF 64

MATCH LINE SHEET 44 OF 64



RECEIVED
 APR 28 2015
 MARSHFIELD, VERMONT
 TOWN CLERK'S OFFICE

LEGEND:
 SEE SHEET 1 OF 64

NOTES:
 SEE SHEETS 2 & 3 OF 64

MONUMENT TABLE:
 SEE SHEETS 6, 7, 8 OF 64

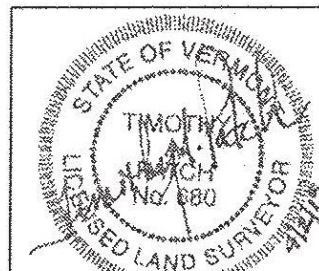
ROW CENTER LINE TABLE:
 SEE SHEET 8 OF 64

ROW LIMIT LINE & CURVE TABLES:
 SEE SHEET 9 OF 64

I CERTIFY THAT THIS PLAT IS BASED ON INFORMATION ABSTRACTED FROM DOCUMENTS, PAROL EVIDENCE, AND PHYSICAL EVIDENCE. THE SURVEY WORK IDENTIFIED HEREON IS CONSISTENT WITH THIS INFORMATION.

I CERTIFY THAT THIS PLAT MEETS THE REQUIREMENTS OF 27 VSA SECTION 1403 AND COMPLIES WITH VERMONT BOARD OF LAND SURVEYORS RULES, PART 5.4 AND 5.5 ADOPTED UNDER 26 VSA SECTION 2544(A).

SIGNED: *Timothy A. Patch*
 TIMOTHY A. PATCH, L.S. 680



ONLY VALID WITH ORIGINAL STAMP

**STATE OF VERMONT
 AGENCY OF TRANSPORTATION**



STATUTORY SURVEY
 TOWN OF MARSHFIELD
VERMONT US ROUTE 2
 APPROXIMATELY FROM PLAINFIELD
 TOWN LINE TO CABOT TOWN LINE

SURVEYED:
 SGC
 ENGINEERING
 REVIEWED:
 TAP

DATE:
 04/07/2015

SCALE:
 1"=40'

FILE:
 z12x600ROW.DGN

SHEET NO.
 43 OF 64

ORIGINAL DRAWING - INK ON POLYESTER FILM MEETING THE REQUIREMENTS OF 27 V.S.A. § 1403

PIN ID # 12X600