

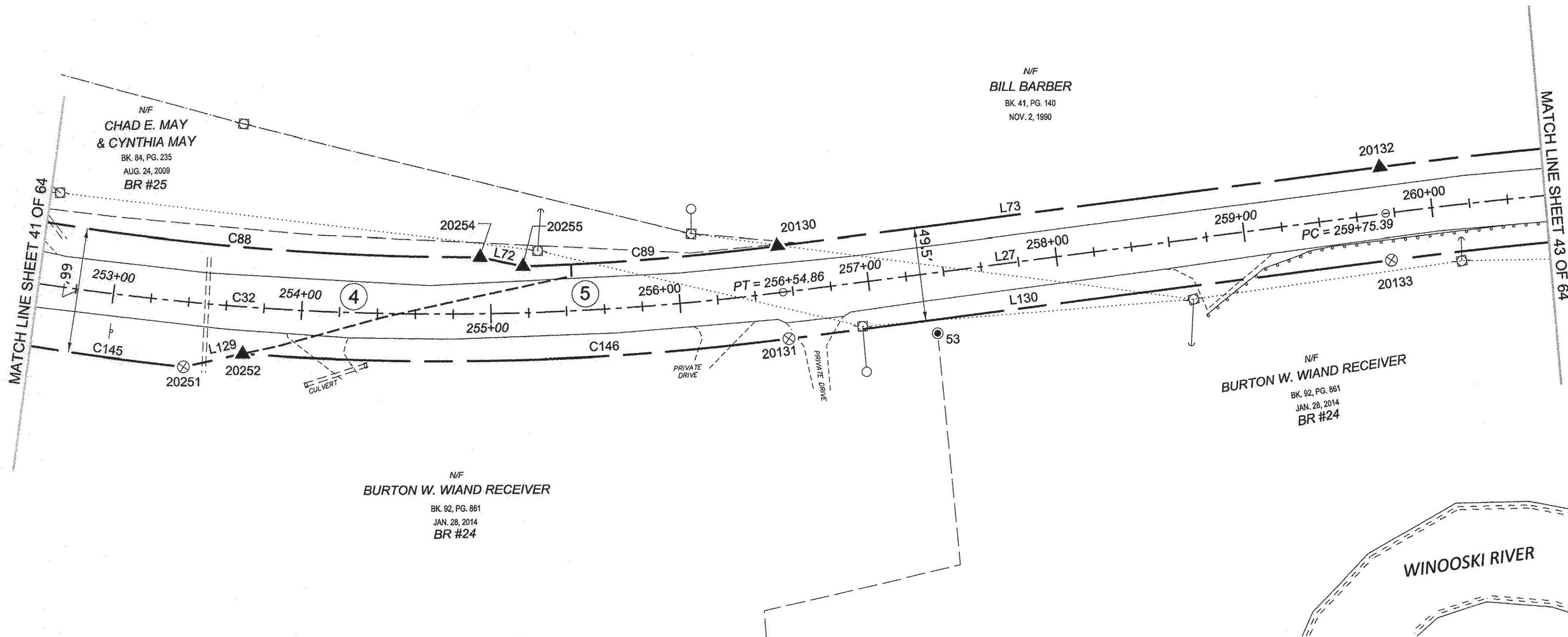


N/F  
**BILL BARBER**  
 BK. 41, PG. 140  
 NOV. 2, 1990

N/F  
**CHAD E. MAY  
 & CYNTHIA MAY**  
 BK. 84, PG. 235  
 AUG. 24, 2009  
 BR #25

N/F  
**BURTON W. WIAND RECEIVER**  
 BK. 92, PG. 861  
 JAN. 28, 2014  
 BR #24

N/F  
**BURTON W. WIAND RECEIVER**  
 BK. 92, PG. 861  
 JAN. 28, 2014  
 BR #24



**LEGEND:**  
 SEE SHEET 1 OF 64

**NOTES:**  
 SEE SHEETS 2 & 3 OF 64

**MONUMENT TABLE:**  
 SEE SHEETS 6, 7, 8 OF 64

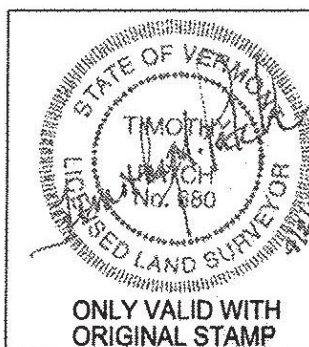
**ROW CENTER LINE TABLE:**  
 SEE SHEET 8 OF 64

**ROW LIMIT LINE & CURVE TABLES:**  
 SEE SHEET 9 OF 64

I CERTIFY THAT THIS PLAT IS BASED ON INFORMATION ABSTRACTED FROM DOCUMENTS, PAROL EVIDENCE, AND PHYSICAL EVIDENCE. THE SURVEY WORK IDENTIFIED HEREON IS CONSISTENT WITH THIS INFORMATION.

I CERTIFY THAT THIS PLAT MEETS THE REQUIREMENTS OF 27 VSA SECTION 1403 AND COMPLIES WITH VERMONT BOARD OF LAND SURVEYORS RULES, PART 5.4 AND 5.5 ADOPTED UNDER 26 VSA SECTION 2544(A).

SIGNED: *Timothy A. Patch*  
 TIMOTHY A. PATCH, L.S. 680



**STATE OF VERMONT  
 AGENCY OF TRANSPORTATION**



**STATUTORY SURVEY**  
 TOWN OF MARSHFIELD  
**VERMONT US ROUTE 2**  
 APPROXIMATELY FROM PLAINFIELD  
 TOWN LINE TO CABOT TOWN LINE

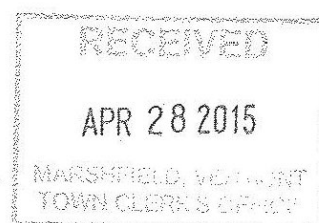
SURVEYED:  
 SGC  
 ENGINEERING  
 REVIEWED:  
 TAP

DATE:  
 04/07/2015

SCALE:  
 1"=40'

FILE:  
 2726500ROW.DGN

SHEET NO.  
 42 OF 64



ORIGINAL DRAWING - INK ON POLYESTER FILM MEETING THE REQUIREMENTS OF 27 V.S.A. § 1403

PIN ID# 12X600