

NF
**PHILIP J. TETREULT
 & BLANCHE TETREULT**
 BK. 29, PG. 342
 SEPT. 8, 1971
 BR #25

NF
**JEREMY WALSH
 & DEBORAH WALSH**
 BK. 69, PG. 311
 NOV. 05, 2004
 BR #25

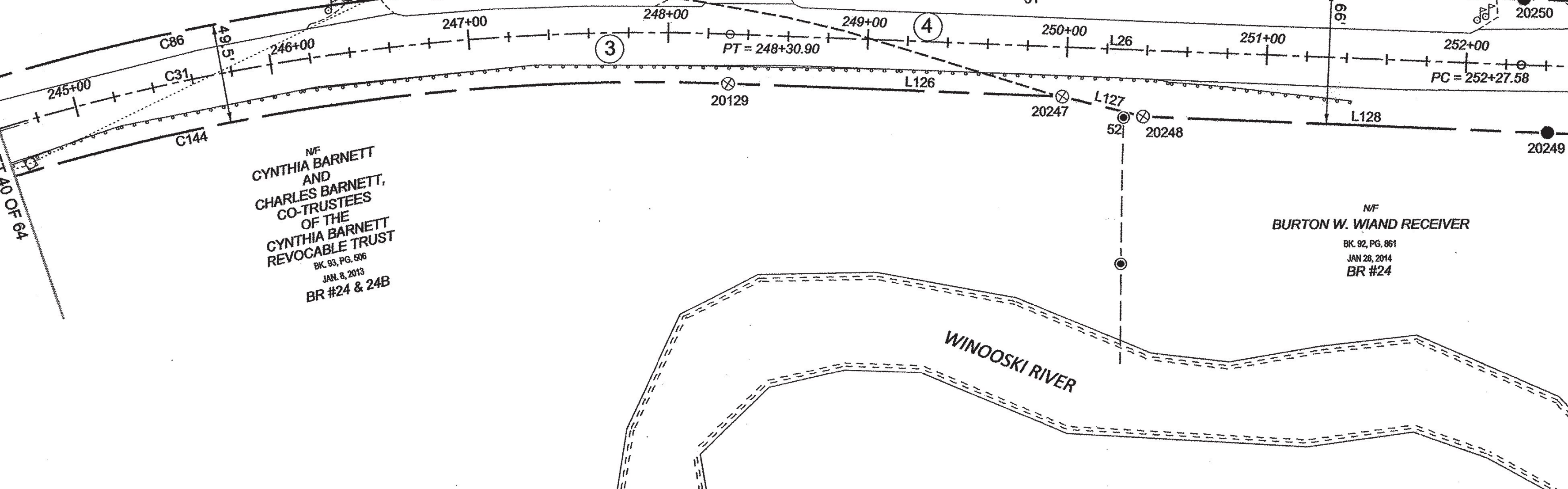
NF
**CHAD E. MAY
 & CYNTHIA MAY**
 BK. 84, PG. 235
 AUG. 24, 2009
 BR #25

NF
**CYNTHIA BARNETT
 AND
 CHARLES BARNETT,
 CO-TRUSTEES
 OF THE
 CYNTHIA BARNETT
 REVOCABLE TRUST**
 BK. 93, PG. 506
 JAN. 8, 2013
 BR #24 & 24B

NF
BURTON W. WIAND RECEIVER
 BK. 92, PG. 861
 JAN 28, 2014
 BR #24

MATCH LINE SHEET 40 OF 64

MATCH LINE SHEET 42 OF 64



LEGEND:
 SEE SHEET 1 OF 64

NOTES:
 SEE SHEETS 2 & 3 OF 64

MONUMENT TABLE:
 SEE SHEETS 6, 7, 8 OF 64

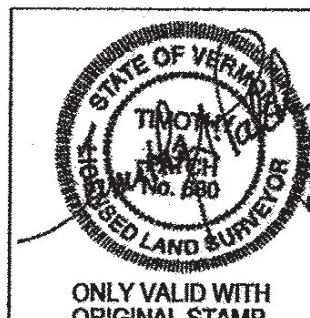
ROW CENTER LINE TABLE:
 SEE SHEET 8 OF 64

ROW LIMIT LINE & CURVE TABLES:
 SEE SHEET 9 OF 64

I CERTIFY THAT THIS PLAT IS BASED ON INFORMATION ABSTRACTED FROM DOCUMENTS, PAROL EVIDENCE, AND PHYSICAL EVIDENCE. THE SURVEY WORK IDENTIFIED HEREON IS CONSISTENT WITH THIS INFORMATION.

I CERTIFY THAT THIS PLAT MEETS THE REQUIREMENTS OF 27 VSA SECTION 1403 AND COMPLIES WITH VERMONT BOARD OF LAND SURVEYORS RULES, PART 5.4 AND 5.5 ADOPTED UNDER 26 VSA SECTION 2544(A).

SIGNED: *Timothy A. Patch*
 TIMOTHY A. PATCH, L.S. 680



ONLY VALID WITH ORIGINAL STAMP

**STATE OF VERMONT
 AGENCY OF TRANSPORTATION**



STATUTORY SURVEY
 TOWN OF MARSHFIELD
VERMONT US ROUTE 2
 APPROXIMATELY FROM PLAINFIELD
 TOWN LINE TO CABOT TOWN LINE

SURVEYED:
 SGC
 ENGINEERING
 REVIEWED:
 TAP
 DATE:
 04/01/2015
 SCALE:
 1"=40'
 FILE:
 212600ROW.DGN
 SHEET NO.
 41 OF 64

ORIGINAL DRAWING - INK ON POLYESTER FILM MEETING THE REQUIREMENTS OF 27 V.S.A. § 1403

RECEIVED
 JUN 30 2015
 MARSHFIELD, VERMONT
 TOWN CLERK'S OFFICE

FIN ID # 127600